

NOTICE

SHORTAGES, IMPROPER FABRICATION OR CLAIMS FOR ANY OTHER REASON MUST BE REPORTED TO THIS COMPANY WITHIN 10 DAYS FROM ORIGINAL DELIVERY. THIS COMPANY ALSO RESERVES THE RIGHT TO FIELD INSPECT MATERIALS PRIOR TO REPLACEMENT OR RECONDITIONING OF MATERIALS AND WILL NOT BE LIABLE FOR CHARGES FROM WORK DONE IN THE FIELD WITHOUT PRIOR AUTHORIZATION FROM THIS COMPANY.

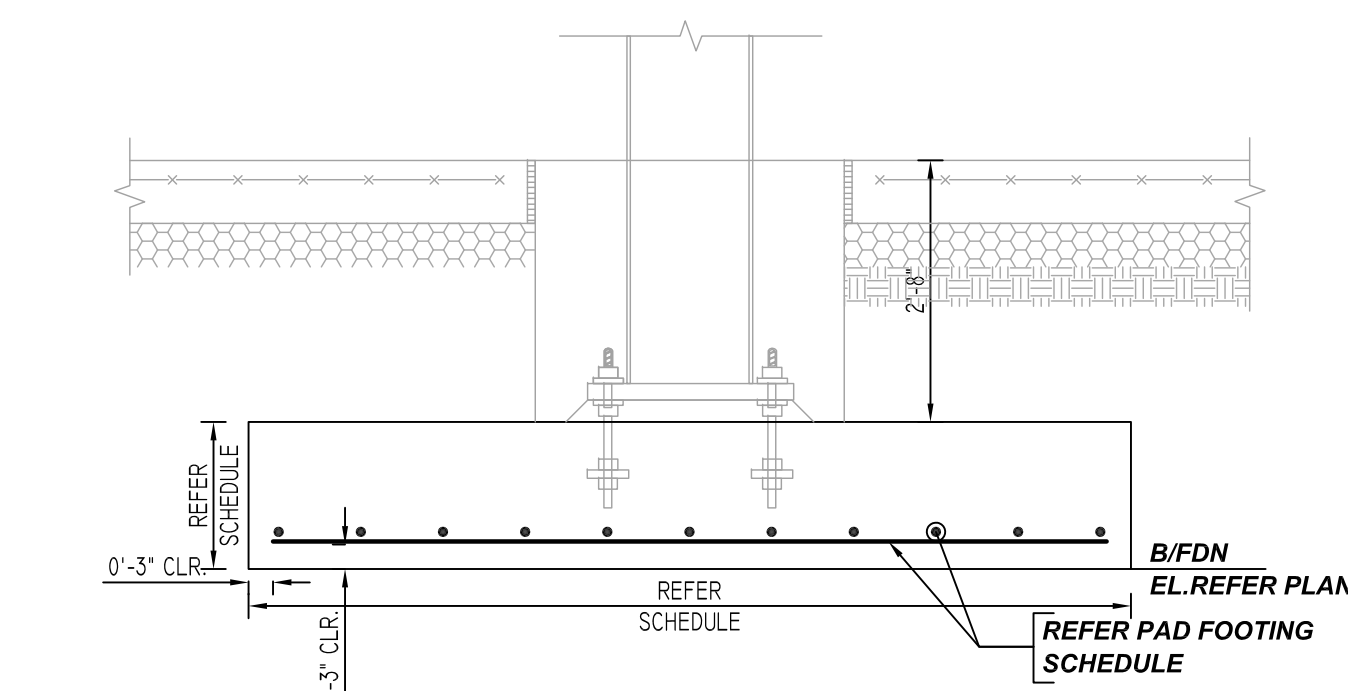
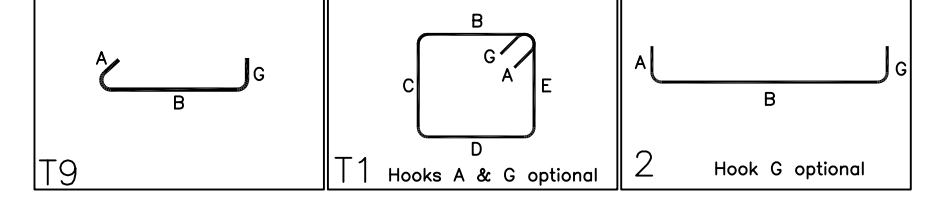
REINFORCING STEEL PLACING DRAWING ONLY USE IN CONJUNCTION WITH CONTRACT DRAWINGS & SPECIFICATIONS. ELEVATIONS & DIMENSIONS SHOWN ON DRAWING ARE FOR DETAILING PURPOSES ONLY AND SHOULD NOT BE USED FOR CONSTRUCTION UNLESS VERIFIED BY ENGINEER OR CONTRACTOR.

A/E PLEASE VERIFY REINFORCEMENT FOLLOWED

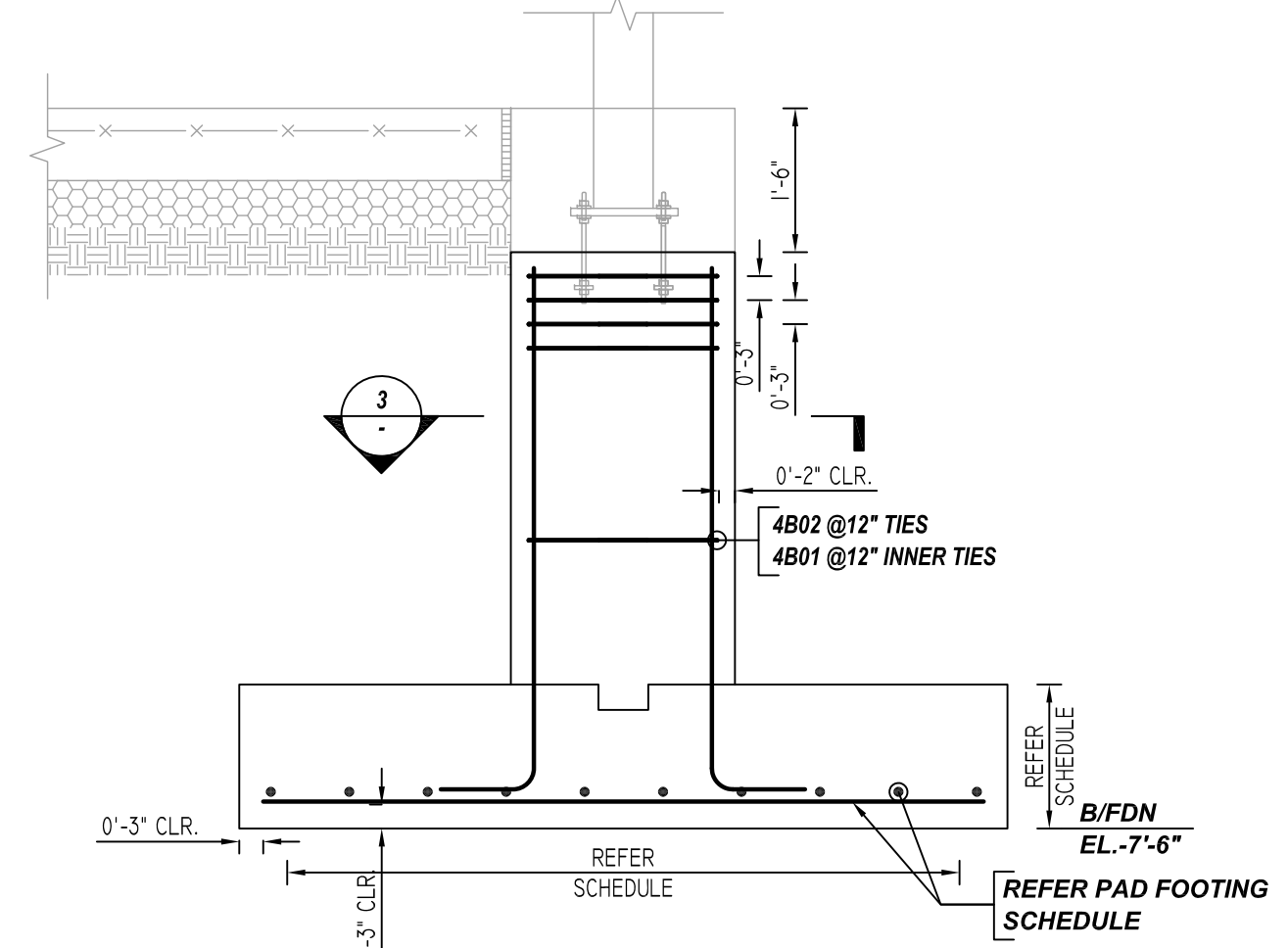
PAD FOOTING SCHEDULE					
MARK	QTY	SIZE	GRID LOCATION	REINFORCING	REMARK
F6.0	2	6'-0"x6'-0"x1'-6"	Q/15 & Q/14.6	2x2x8 #6 X 5'-6" BOT.EW	SECTION 1/R03
F8.0	3	8'-0"x8'-0"x1'-6"	P/7, 8 & 13	3x2x10 #6 X 7'-6" BOT.EW	SECTION 1/R03
F9.0	2	9'-0"x9'-0"x1'-6"	P/12 & 14	2x2x11 #6 X 8'-6" BOT.EW	SECTION 1/R03
F10.0	9	10'-0"x10'-0"x1'-6"	M/15, N/15, P/15, J/9, K/9, J/10, K/10, M/10 & N/10	9x2x12 #6 X 9'-6" BOT.EW	SECTION 1/R03
F11.0	17	11'-0"x11'-0"x2'-0"	J/7, K/7, L/7, N/7, J/8, K/8, L/8, M/8, N/8, L/9, M/9, N/9, L/10, J/11, K/11, M/13 & N/13	17x2x13 #6 X 10'-6" BOT.EW	SECTION 1/R03
F12.0	7	12'-0"x12'-0"x2'-0"	M/7, L/11, N/11, K/12, N/12, M/14 & N/14	7x2x14 #8 X 11'-6" BOT.EW	SECTION 1/R03
F13.0	10	13'-0"x13'-0"x2'-0"	M/11, J/12, L/12, M/12, J/13, K/13, L/13, J/14, K/14 & L/14	10x2x15 #8 X 12'-6" BOT.EW	SECTION 1/R03

PIER SCHEDULE						
MARK	QTY	SIZE	GRID LOCATION	VERTS	TIES & ADD'L TIES	REMARK
P3	1	28"x28"	P/8	20 #6 6B01 D/V	2x4 #4 4B02 @12" TIES 2x4 #4 4B01 @12" INNER TIES 2x4 #4 4B02 @3" TIES @TOP 2x4 #4 4B01 @3" INNER TIES @ TOP	SECTION 2/R03

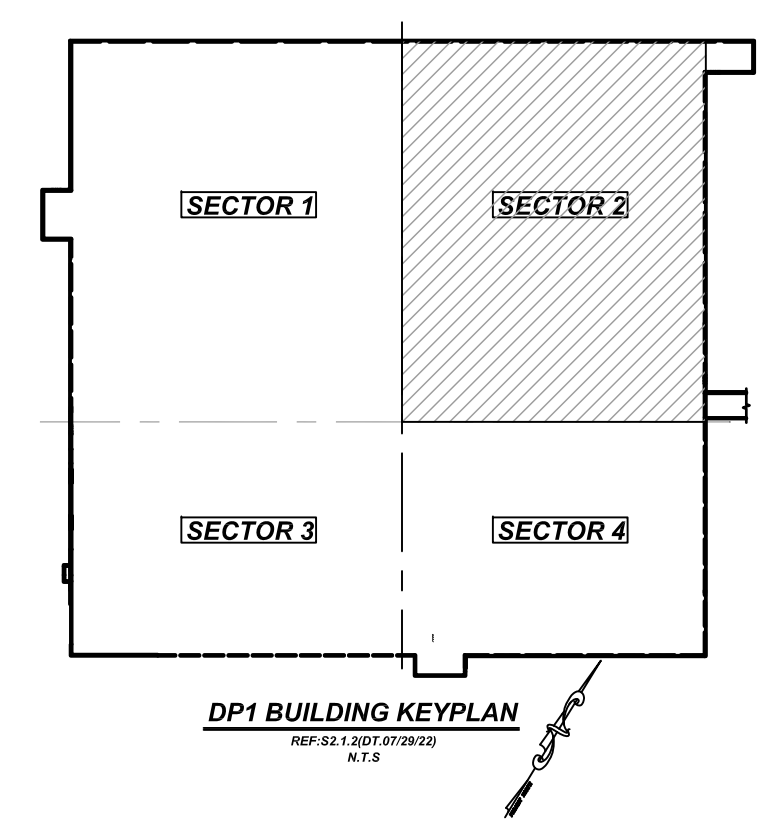
BAR LIST											
Bar Mark	Qty	Size	Total Length	Type	X	Y	Z	W	V	U	T
4B01	16	#4	2'-3"	19	0'-4"	7'-0"					
4B02	16	#4	7'-3"	11	0'-4"	1'-3"	2'-0"				
6B01	20	#6	6'-3"	2	1'-0"	5'-5"					



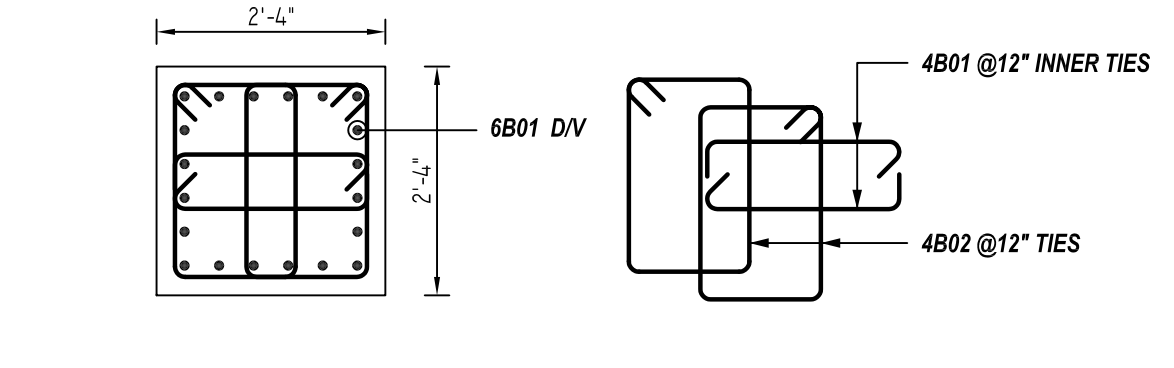
1 SECTION
R03
REF: 1/S4.1 (DT.07/29/22)
SCALE: 1/2" = 1'-0"



2 SECTION
REF: 2/S4.1 (DT.07/29/22)
SCALE: 1/2" = 1'-0"

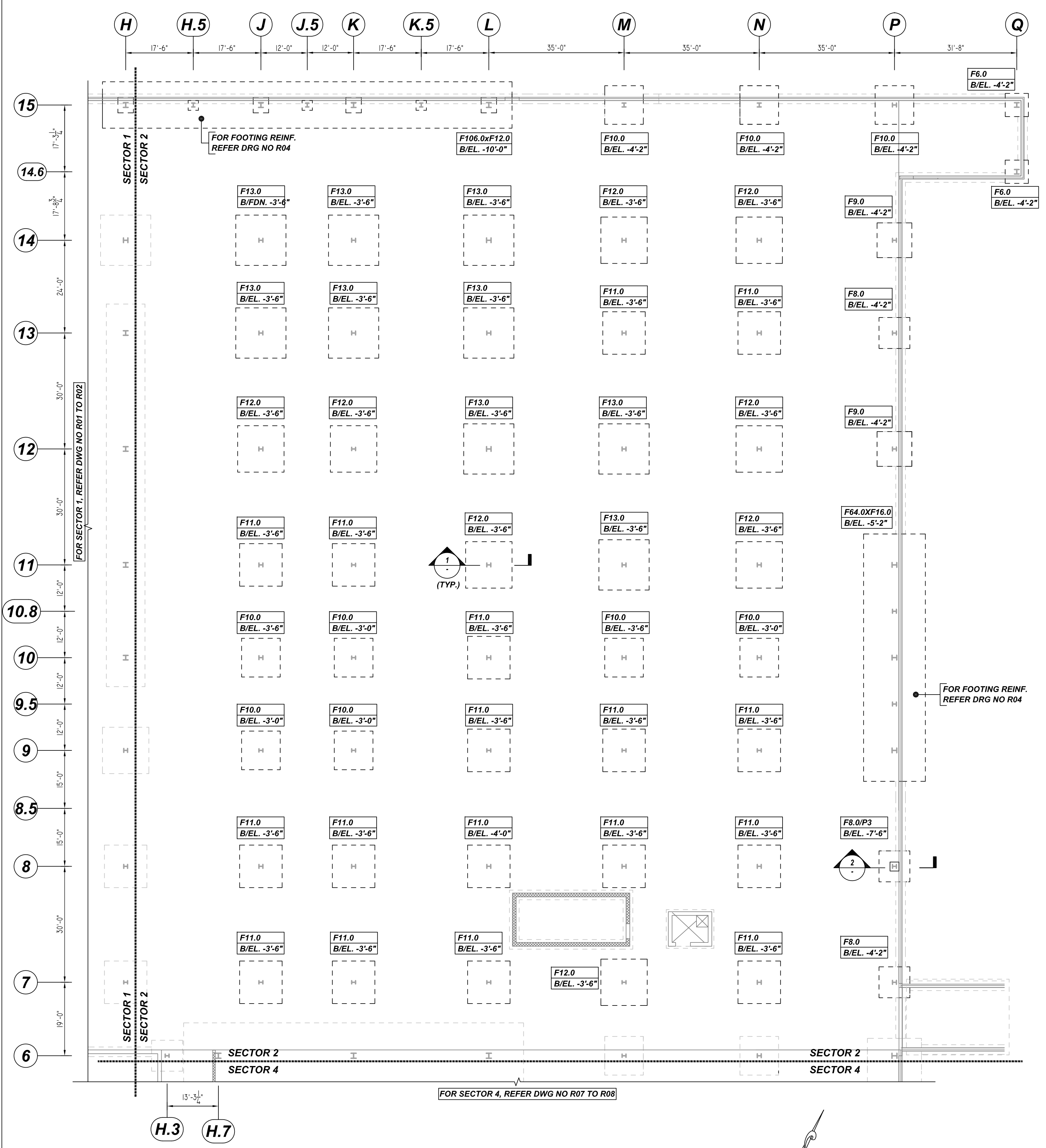


DP-1 BUILDING KEYPLAN
REF: S1.1 (DT.07/29/22)
SCALE: 1/4" = 1'-0"



3 SECTION
REF: 10/S4.1 (DT.07/29/22)
SCALE: 1/2" = 1'-0"

A/E PLEASE VERIFY TIES ARRANGEMENT FOLLOWED



DP-1 BUILDING SECTOR 2 PAD FOOTING REINFORCEMENT DETAILS

REF: S2.1, 2 (DT.07/29/22)
SCALE: 1/16" = 1'-0"

TYPICAL REINFORCING BAR CLEARANCE TABLE	
LOCATION	MIN. COVER
FOOTING SIDE & BOTTOM	3" CLR
FOOTING TOP	2" CLR
PIER ALL SIDES	2" CLR

A/E PLEASE VERIFY FOOTING TOP COVER

**ALL BARS IN THIS DRAWING
ASTM A615 GRADE 60
BLACK UNCOATED**

REBAR GRADE 60 ASTM A-615

SPLICES USED		ABBREVIATIONS		BAR MARK SIZE EQUIVALENT	
CLASS B 4,500 psi UNO				Imperial	Soft Metric
TOP BARS	OTHER BARS	ADD.	= Additional	#3	#10
#3 24"	#3 19"	B.O.W.	= Bottom of wall	#4	#13
#4 32"	#4 24"	C.B.	= Corner Bars	#5	#16
#5 39"	#5 30"	DIAG.	= Diagonal	#6	#19
#6 46"	#6 36"	D.O.	= Door Opening	#7	#22
#7 67"	#7 52"	DWLS.	= Dowels	#8	#25
#8 77"	#8 59"	E.F.	= Each Face	#9	#29
#9 86"	#9 67"	E.S.	= Each Side	#10	#32
#10 95"	#10 73"	E.W.	= Each Way	#11	#36
#11 104"	#11 81"	FTG.	= Footing		
#14	#14	F.F.	= Far Face		
		HORIZ.	= Horizontal		
		I.F.	= Inside Face		
		INTERS.	= Intersection		
		L.W.	= long Way		
		N.F.	= Near Face		
		O.F.	= Outside Face		
		S.W.	= Short Way		
		T&B	= Top & Bottom		
		T.O.W.	= Top of Wall		
		Trans.	= Transverse		
		VERT.	= Vertical		

STA PHARMACEUTICAL MIDDLETOWN EXPANSION DP-1
DP-1 BUILDING SECTOR 2 PAD FOOTING & PIER REINFORCEMENT DETAILS
MIDDLETOWN, DE 19709

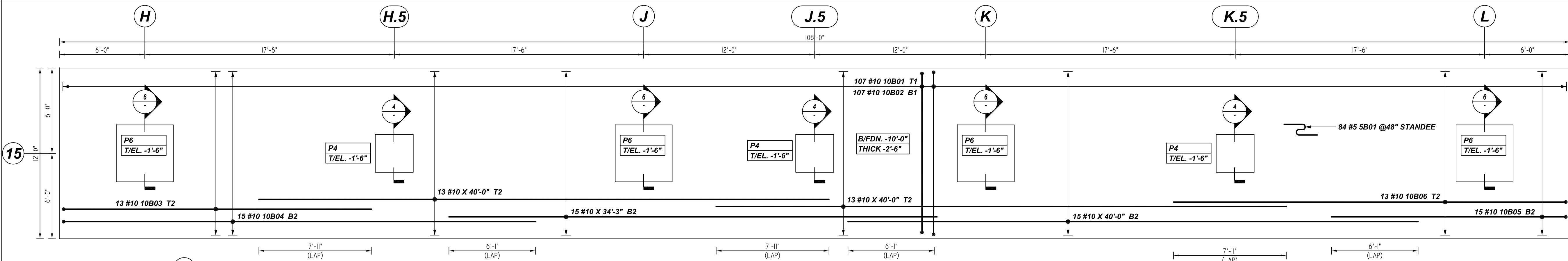
CUSTOMER: -
DESIGNER: -

REV NO	DATE	APPROVAL	REV NO	DATE	SENT FOR
0	08.08.22				

DRAWN BY	DATE	JOB NO	SHEET NO.
JSN/MET	08.08.22	-	R03

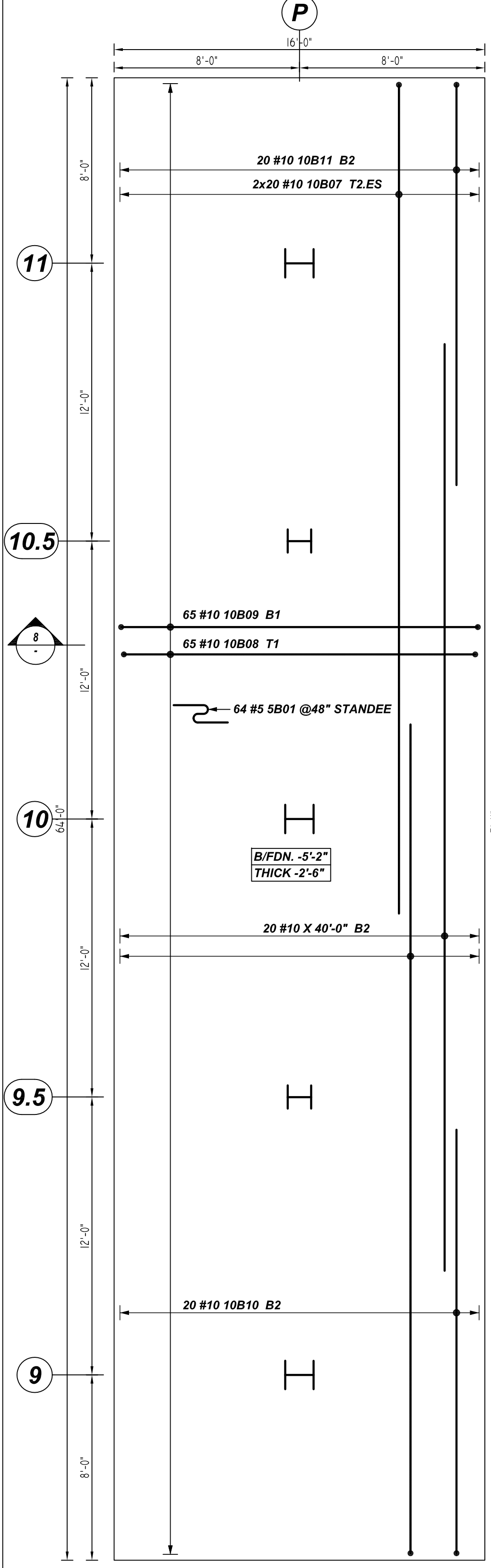
NOTICE
 SHORTAGES, IMPROPER FABRICATION OR CLAIMS FOR ANY OTHER REASON MUST BE REPORTED TO THIS COMPANY WITHIN 10 DAYS FROM ORIGINAL DELIVERY. THIS COMPANY ALSO RESERVES THE RIGHT TO FIELD INSPECT MATERIALS PRIOR TO REPLACEMENT OR RECONDITIONING OF MATERIALS AND WILL NOT BE LIABLE FOR CHARGES FROM WORK DONE IN THE FIELD WITHOUT PRIOR AUTHORIZATION FROM THIS COMPANY.

REINFORCING STEEL PLACING DRAWING ONLY. USE IN CONJUNCTION WITH CONTRACT DRAWINGS & SPECIFICATIONS. ELEVATIONS & DIMENSIONS SHOWN ON DRAWING ARE FOR DETAILING PURPOSES ONLY AND SHOULD NOT BE USED FOR CONSTRUCTION UNLESS VERIFIED BY ENGINEER OR CONTRACTOR.



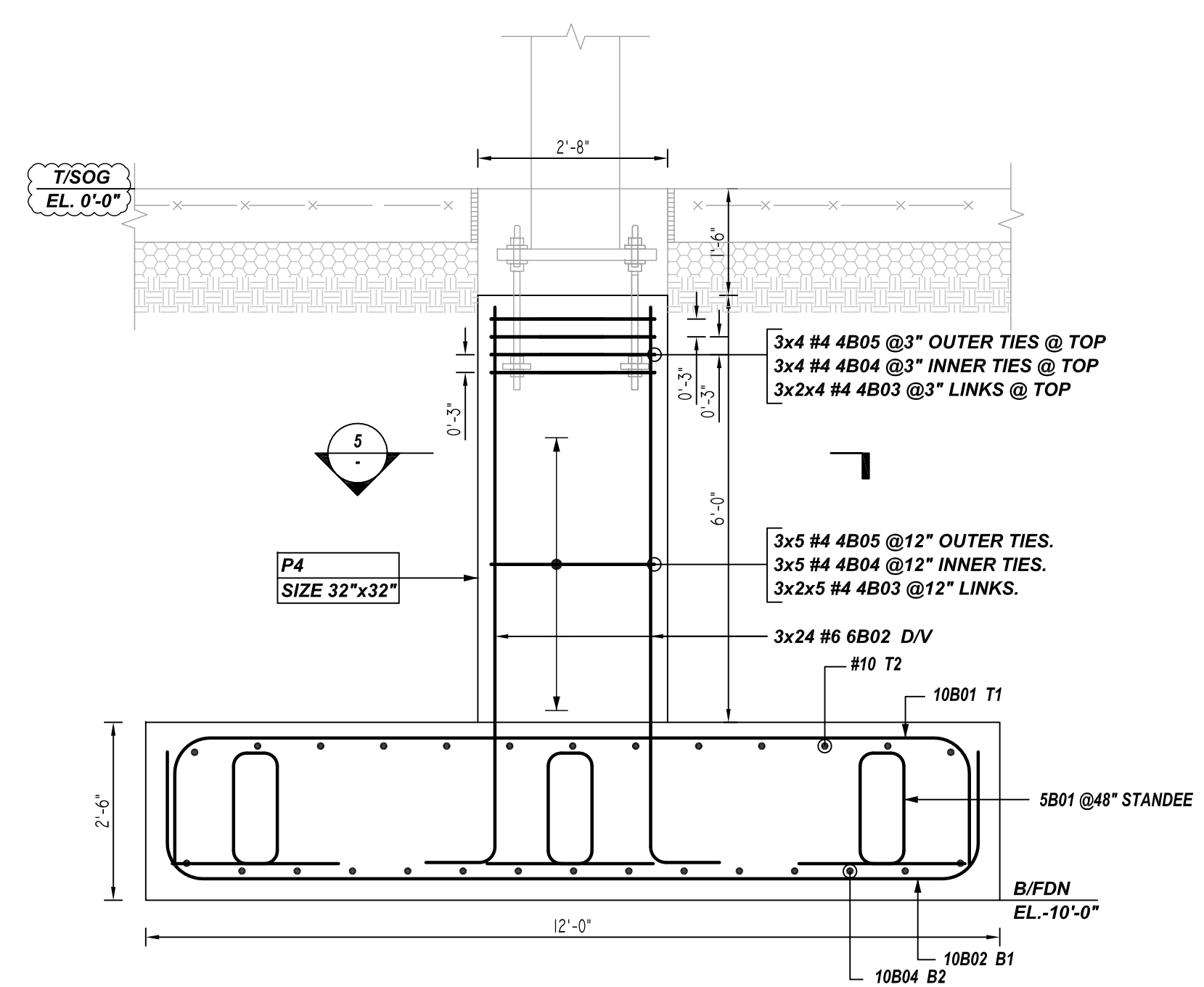
COMBINED FOOTING F106.0 X F12.0 REINFORCEMENT DETAILS

REF: S2.1.2 & 23/S4.1 (DT.07/29/22)
 SCALE: 1/4" = 1'-0"



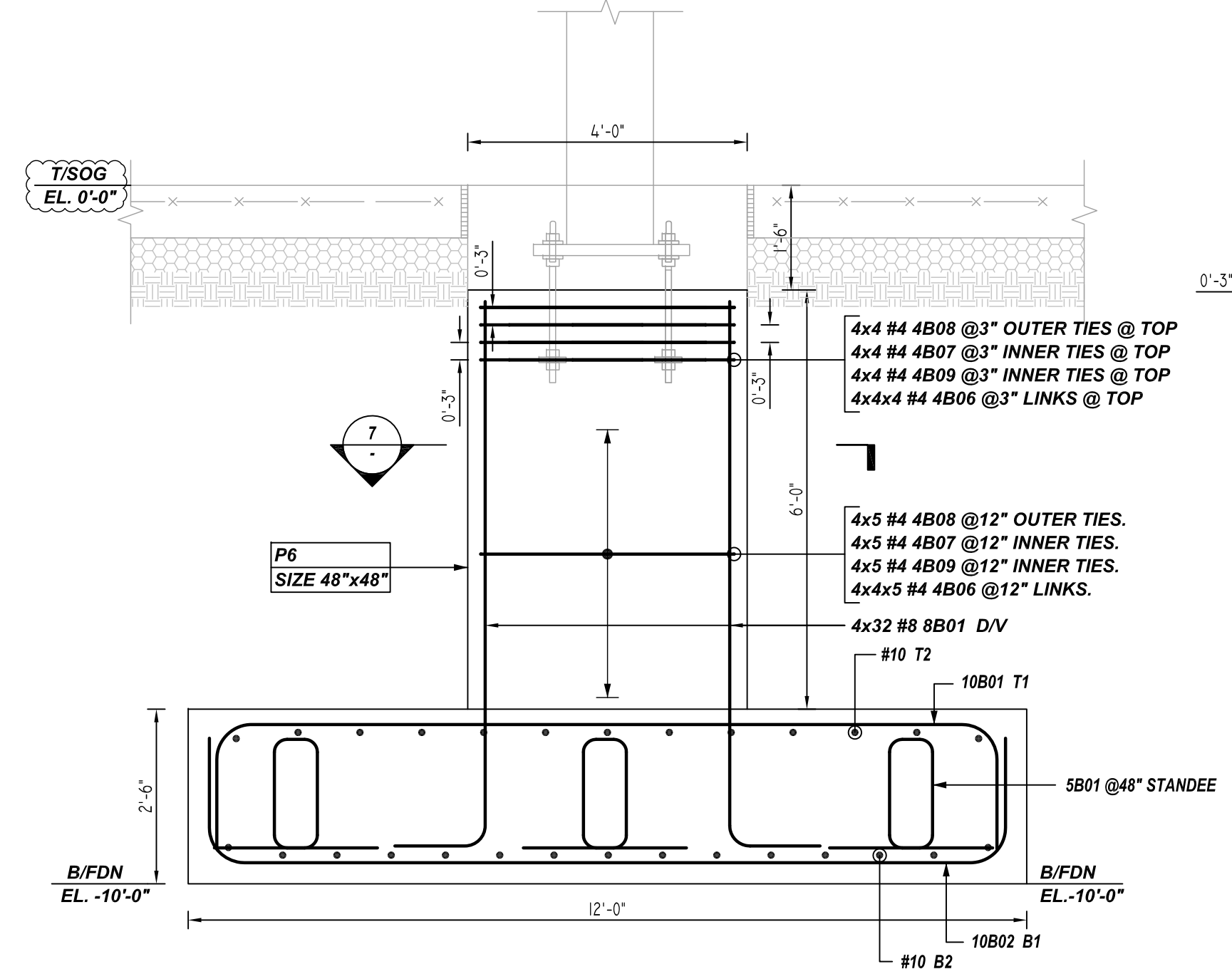
COMBINED FOOTING F64.0 X F16.0 REINFORCEMENT DETAILS

REF: S2.1.2 & 18/S4.1 (DT.07/29/22)
 SCALE: 1/4" = 1'-0"



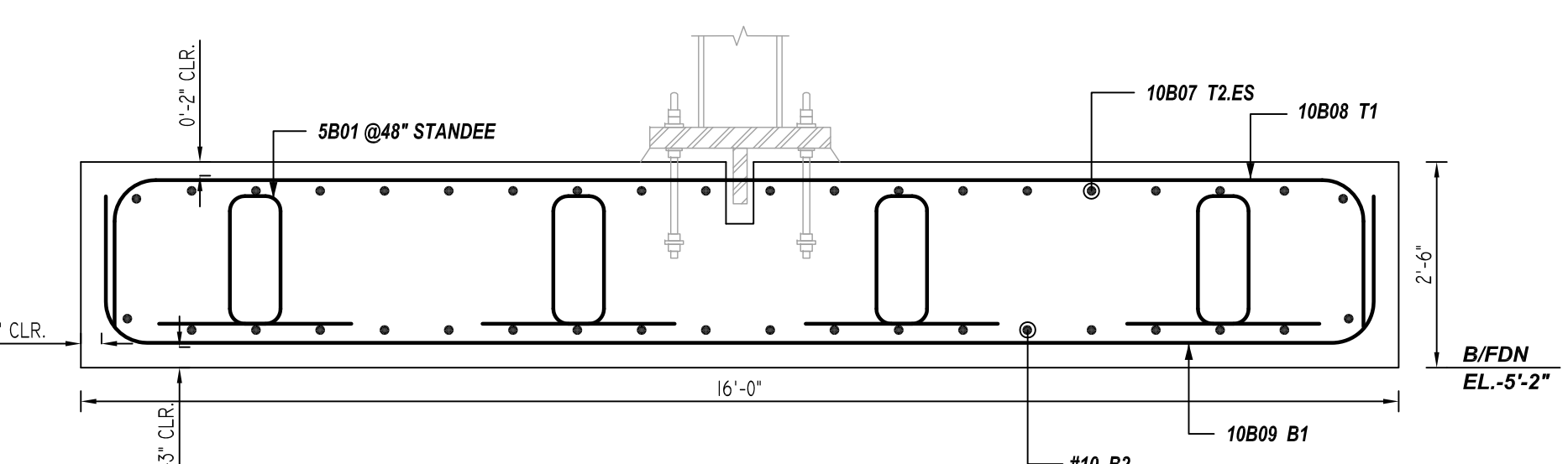
4 SECTION

REF: S2.1.2, 23/S4.1 & 2/S4.1 (DT.07/29/22)
 SCALE: 1/2" = 1'-0"
 @ 3 LOCATIONS



6 SECTION

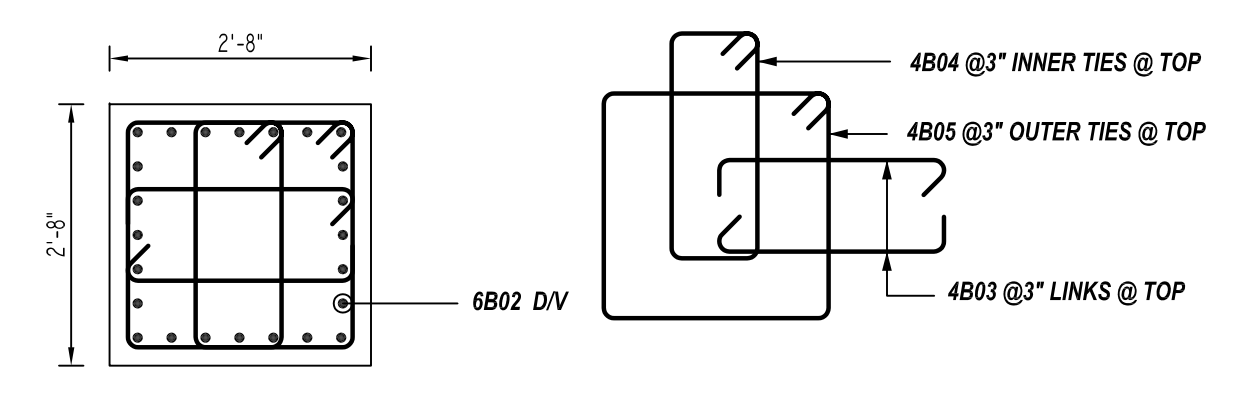
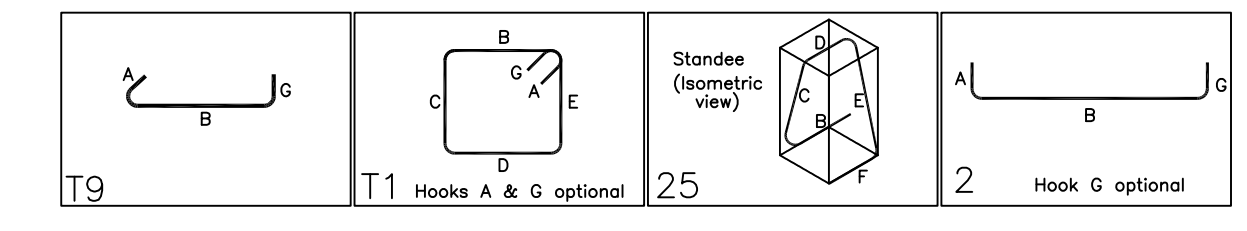
REF: S2.1.2, 23/S4.1 & 2/S4.1 (DT.07/29/22)
 SCALE: 1/2" = 1'-0"
 @ 4 LOCATIONS



8 SECTION

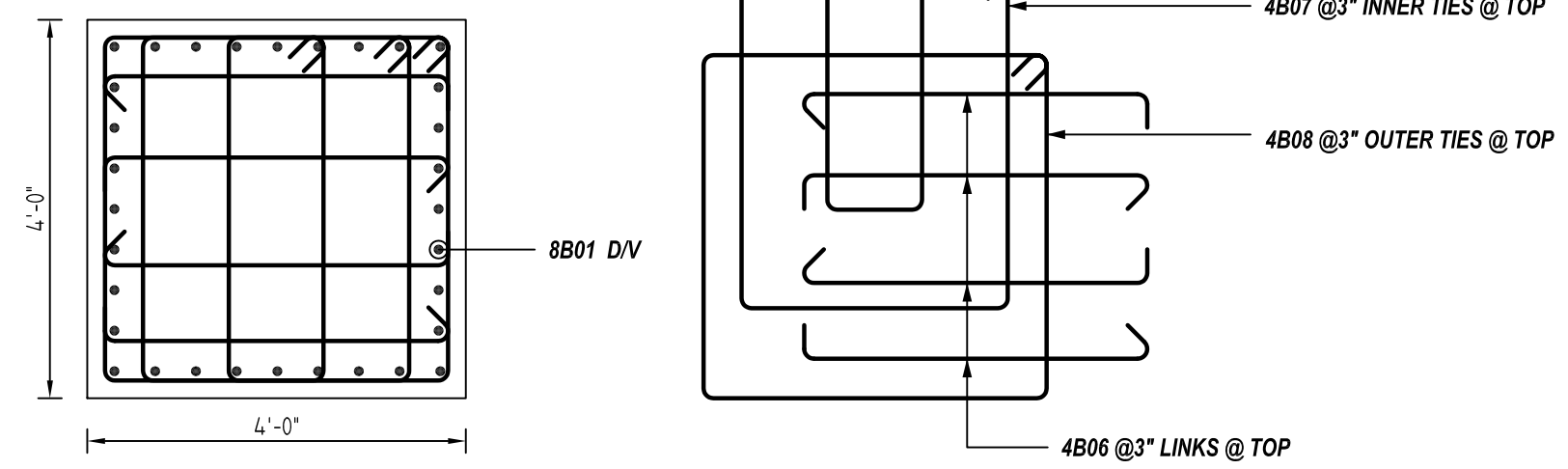
REF: S2.1.2, 18/S4.1 & 1/S4.1 (DT.07/29/22)
 SCALE: 1/2" = 1'-0"

Bar Mark	Qty	Size	Total Length	Type	X'	Y'	Z'	W'	V'	U'	T'	S'	R'	Q'	P'	O'	N'	M'	L'	K'	J'	I'	H'	G'	F'	E'	D'	C'	B'	A'	
4B03	54	#4	3'-11"	19	0'-4 1/2"	2'-4"																									
4B04	21	#4	7'-3"	11	0'-4 1/2"	0'-11"	2'-4"	0'-11"	2'-4"																						
4B05	21	#4	10'-2"	11	0'-4 1/2"	2'-4"	2'-4"	2'-4"	2'-4"																						
4B06	144	#4	4'-5"	19	0'-4 1/2"	3'-8"																									
4B07	36	#4	13'-9 1/2"	11	0'-4 1/2"	2'-10 1/2"	3'-8"	2'-10 1/2"	3'-8"																						
4B08	36	#4	15'-5"	11	0'-4 1/2"	3'-8"	3'-8"	3'-8"	3'-8"																						
4B09	36	#4	10'-2"	11	0'-4 1/2"	1'-0 1/2"	3'-8"	1'-0 1/2"	3'-8"																						
5B01	148	#5	6'-11 1/2"	25		1'-8"	1'-7 1/2"	0'-8"	1'-7 1/2"	1'-8"																					
6B02	72	#6	8'-10"	2	1'-0"	7'-10"																									
8B01	128	#8	3'-2"	2	1'-4"	7'-10"																									
10B01	107	#10	16'-11 1/2"	2	1'-10"	11'-3 1/2"																									
10B02	107	#10	15'-2"	2	1'-10"	11'-4"																									
10B03	13	#10	23'-6"	2	1'-10"	21'-8"																									
10B04	15	#10	35'-0"	2	1'-10"	33'-2"																									
10B05	15	#10	18'-4"	2	1'-10"	16'-6"																									
10B06	13	#10	29'-5"	2	1'-10"	27'-7"																									
10B07	40	#10	37'-8"	2	1'-10"	35'-10"																									
10B08	65	#10	18'-11 1/2"	2	1'-10"	15'-3 1/2"																									
10B09	65	#10	19'-2"	2	1'-10"	15'-4"																									
10B10	20	#10	20'-2"	2	1'-10"	18'-4"																									
10B11	20	#10	19'-2"	2	1'-10"	17'-4"																									



5 SECTION

REF: 11/S4.1 (DT.07/29/22)
 SCALE: 1/2" = 1'-0"



7 SECTION

REF: 13/S4.1 (DT.07/29/22)
 SCALE: 1/2" = 1'-0"

TYPICAL REINFORCING BAR CLEARANCE TABLE

LOCATION	MIN. COVER
FOOTING SIDE & BOTTOM	3" CLR
FOOTING TOP	2" CLR
PIER ALL SIDES	2" CLR

A/E PLEASE VERIFY FOOTING TOP COVER

**ALL BARS IN THIS DRAWING
 ASTM A615 GRADE 60
 BLACK UNCOATED**

REBAR GRADE 60 ASTM A-615

SPLICES USED		ABBREVIATIONS		BAR MARK SIZE EQUIVALENT	
CLASS B 4,500 psi UNO		ADD. = Additional	B.O.W. = Bottom of wall	Imperial	
C.B. = Corner Bars	DIAG. = Diagonal	D.O. = Door Opening	D.WLS. = Dowels	Soft Metric	
E.F. = Each Face	E.S. = Each Side	E.W. = Each Way	FTG. = Footing	#3	#10
F.F. = Far Face	HORIZ. = Horizontal	I.F. = Inside Face	INTERS. = Intersection	#4	#13
L.W. = long Way	N.F. = Near Face	O.F. = Outside Face	S.W. = Short Way	#5	#16
T&B = Top & Bottom	T.O.W. = Top of Wall	Trans. = Transverse	VERT. = Vertical	#6	#19
#3	#4	#5	#6	#7	#22
#7	#8	#9	#10	#11	#25
#8	#9	#10	#11	#12	#29
#9	#10	#11	#12	#13	#32
#10	#11	#12	#13	#14	#36

STA PHARMACEUTICAL MIDDLETOWN EXPANSION DP-1
 DP-1 BUILDING SECTOR 2 PAD FOOTING & PIER REINFORCEMENT DETAILS
MIDDLETOWN, DE 19709

CUSTOMER: -
 DESIGNER: -

REV NO	DATE	SENT FOR	REV NO	DATE	SENT FOR	DRAWN BY	DATE	JOB NO	SHEET NO.
0	08.08.22	APPROVAL				JSN/MET	08.08.22	-	R04