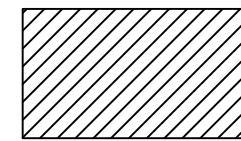
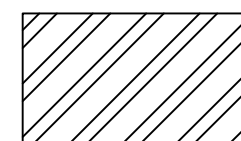
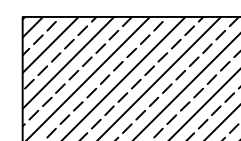
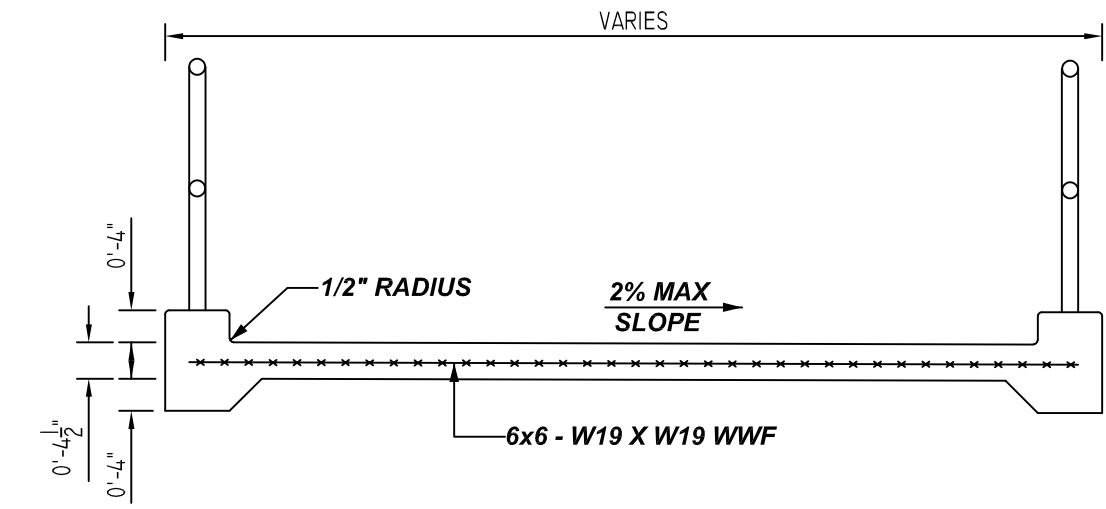
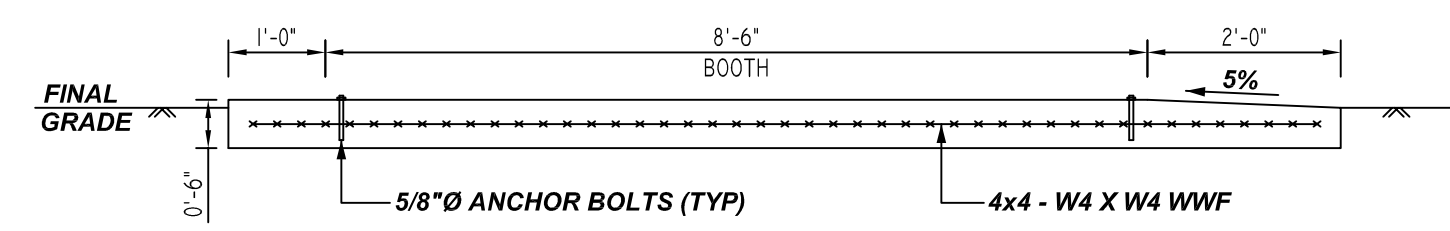


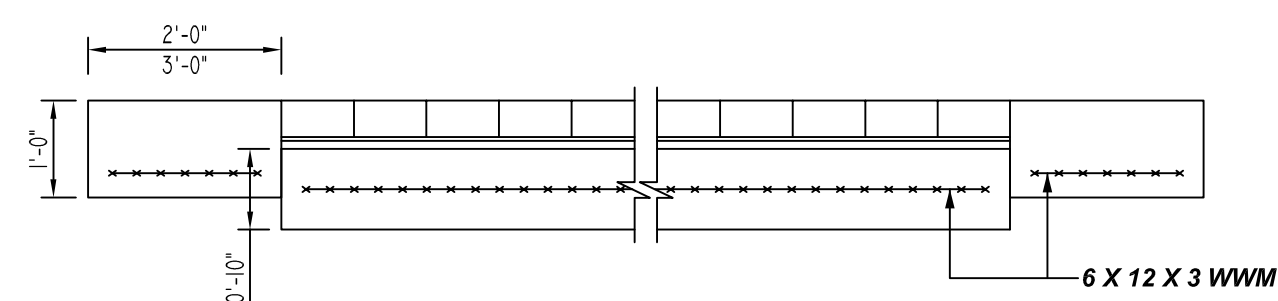
- LEGEND:**
-  **HANDICAP RAMP (REFER SECTION-1)**
 -  **PARKING BOOTH (REFER SECTION-2)**
 -  **PRECAST CONCRETE PAVERS (REFER SECTION-3)**



1 SECTION
REF: GS-16 (DT.01/31/19)
SCALE: 1/2" = 1'-0"



2 SECTION
REF: SS-8 (DT.01/31/19)
SCALE: 1/2" = 1'-0"



3 SECTION
REF: GS-18 (DT.01/31/19)
SCALE: 1/2" = 1'-0"

FOR APPROVAL

MESH DETAILS					
S. NO	ELEMENT	MESH SIZE	SHEETS	AREA	REMARK
1	4 1/2" THK HANDICAP RAMP	6x6 - W19 X W19 WWF	16	1610 SQ.FT	8'-0 X 15'-0" SHEET SIZE (15% LAP ADDED)
2	6" THK PARKING BOOTH	4x4 - W4 X W4 WWF	6	545 SQ.FT	8'-0 X 15'-0" SHEET SIZE (15% LAP ADDED)
3	12" THK PRECAST CONCRETE PAVERS	6 X 12 X 3 WWM	4	355 SQ.FT	8'-0 X 15'-0" SHEET SIZE (15% LAP ADDED)
4	10" THK PRECAST CONCRETE PAVERS	6 X 12 X 3 WWM	1	110 SQ.FT	8'-0 X 15'-0" SHEET SIZE (15% LAP ADDED)

SITE LAYOUT PLAN
REF: GS-7 (DT.01/31/2019)
SCALE: 1/48" = 1'-0"

GRADE	A615/60 (UNO)		
PREFIX	-		
BAR LIST NOS.	-		
REV	DESCRIPTION	ISSUED DATE	ISSUED FOR
0	IFA	09/13/2022	APPROVAL
STRUCTURE	SITE WORK DETAILS		
FLOOR	-		
JOB NO	-		
CUSTOMER	EXTECK BUILDING		
JOB	RENOVATE ROADS PROJECT 4		
LOCATION	NORTHPORT, N.Y. 11768		
DRAWN	DATE	CONTROL CODE	DWG. NO.
MRS	09/13/2022	-	R05