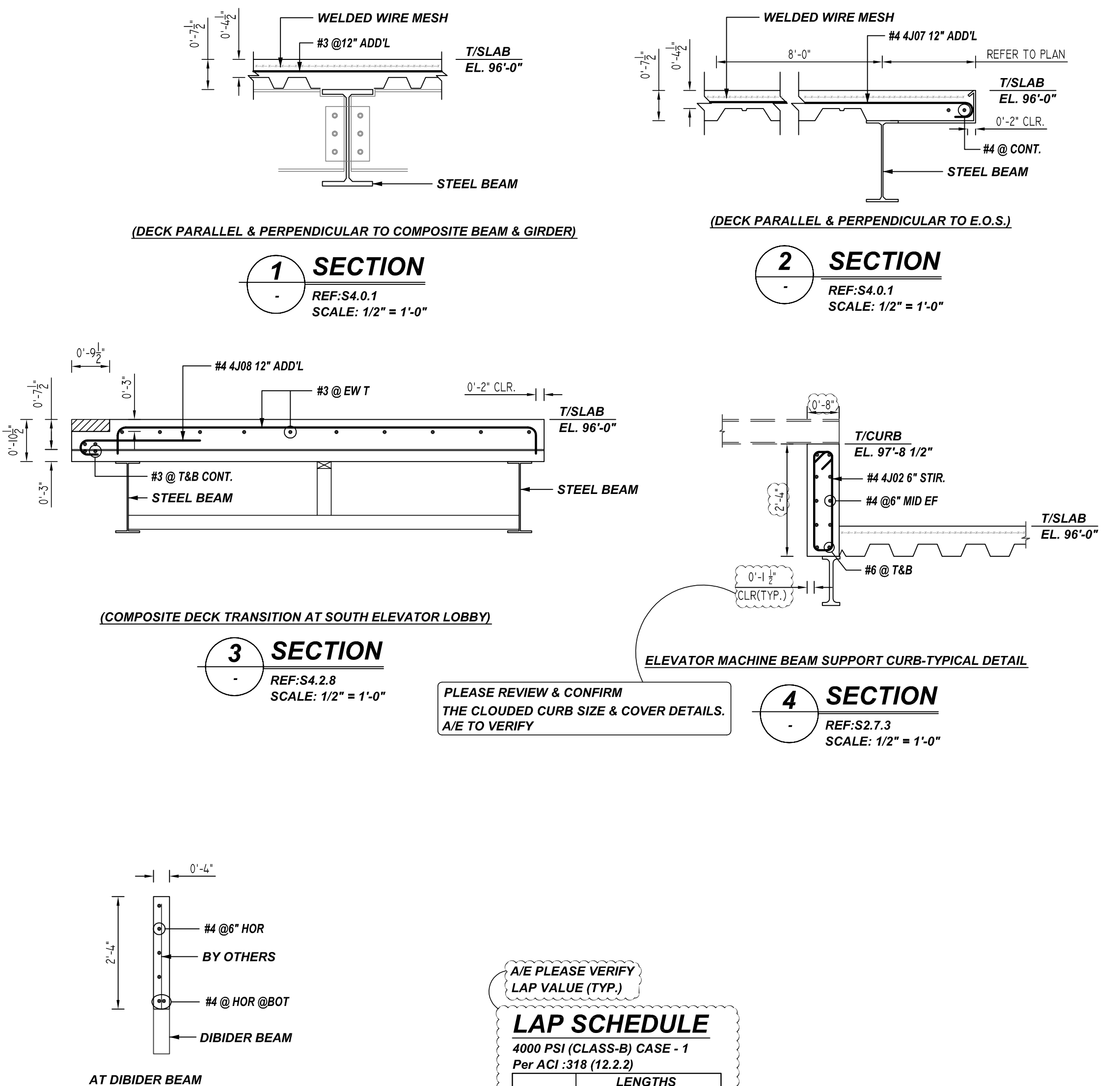


NOTICE
 SHORTAGES, IMPROPER FABRICATION OR CLAIMS FOR ANY OTHER REASON MUST BE REPORTED TO THIS COMPANY WITHIN 10 DAYS FROM ORIGINAL DELIVERY. THIS COMPANY ALSO RESERVES THE RIGHT TO FIELD INSPECT MATERIALS PRIOR TO REPLACEMENT OR RECONDITIONING OF MATERIALS AND WILL NOT BE LIABLE FOR CHARGES FROM WORK DONE IN THE FIELD WITHOUT PRIOR AUTHORIZATION FROM THIS COMPANY.

REINFORCING STEEL PLACING DRAWING ONLY. USE IN CONJUNCTION WITH CONTRACT DRAWINGS & SPECIFICATIONS. ELEVATIONS & DIMENSIONS SHOWN ON DRAWING ARE FOR DETAILING PURPOSES ONLY AND SHOULD NOT BE USED FOR CONSTRUCTION UNLESS VERIFIED BY ENGINEER OR CONTRACTOR.



PLEASE REVIEW & CONFIRM THE CLOUDED CURB SIZE & COVER DETAILS. A/E TO VERIFY

LAP SCHEDULE
 4000 PSI (CLASS-B) CASE - 1
 Per ACI 318 (12.2.2)

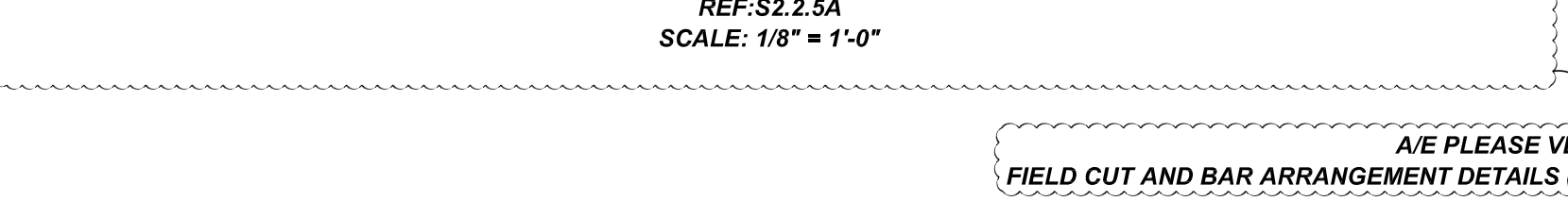
BAR#	LENGTHS	
	TOP	OTHERS
#3	2'-0"	1'-7"
#4	2'-8"	2'-1"
#5	3'-4"	2'-7"
#6	4'-0"	3'-1"
#7	5'-10"	4'-6"
#8	6'-8"	5'-2"
#9	7'-7"	5'-10"
#10	8'-6"	6'-7"
#11	9'-5"	7'-3"

A/E PLEASE VERIFY COVER VALUE (TYP.)

TYPICAL REINFORCING BAR CLEARANCE TABLE	
LOCATION	MIN. COVER
SLAB TOP & BOTTOM	2" CLR
SLAB EDGE	2" CLR

**ALL BARS IN THIS DRAWING
 ASTM A615 GRADE 60
 BLACK UNCOATED**

LEVEL-5 AREA-A SLAB ON DECK REINFORCEMENT DETAILS



REBAR GRADE 60 ASTM A-615

SPLICES USED		ABBREVIATIONS		BAR MARK SIZE EQUIVALENT	
CLASS B 4,000 psi UNO				Imperial	Soft Metric
#3	-	ADD.	= Additional	#3	#10
#4	-	B.O.W.	= Bottom of wall	#4	#13
#5	-	C.B.	= Corner Bars	#5	#16
#6	-	DIAG.	= Diagonal	#6	#19
#7	-	D.O.	= Door Opening	#7	#22
#8	-	D.W.L.S.	= Dowels	#8	#25
#9	-	E.F.	= Each Face	#9	#29
#10	-	E.S.	= Each Side	#10	#32
#11	-	E.W.	= Each Way	#11	#36
#12	-	FTG.	= Footing		
		F.F.	= Far Face		
		HORIZ.	= Horizontal		
		I.F.	= Inside Face		
		INTERS.	= Intersection		
		L.W.	= long Way		
		N.F.	= Near Face		
		O.F.	= Outside Face		
		S.W.	= Short Way		
		T&B	= Top & Bottom		
		T.O.W.	= Top of Wall		
		Trans.	= Transverse		
		VERT.	= Vertical		

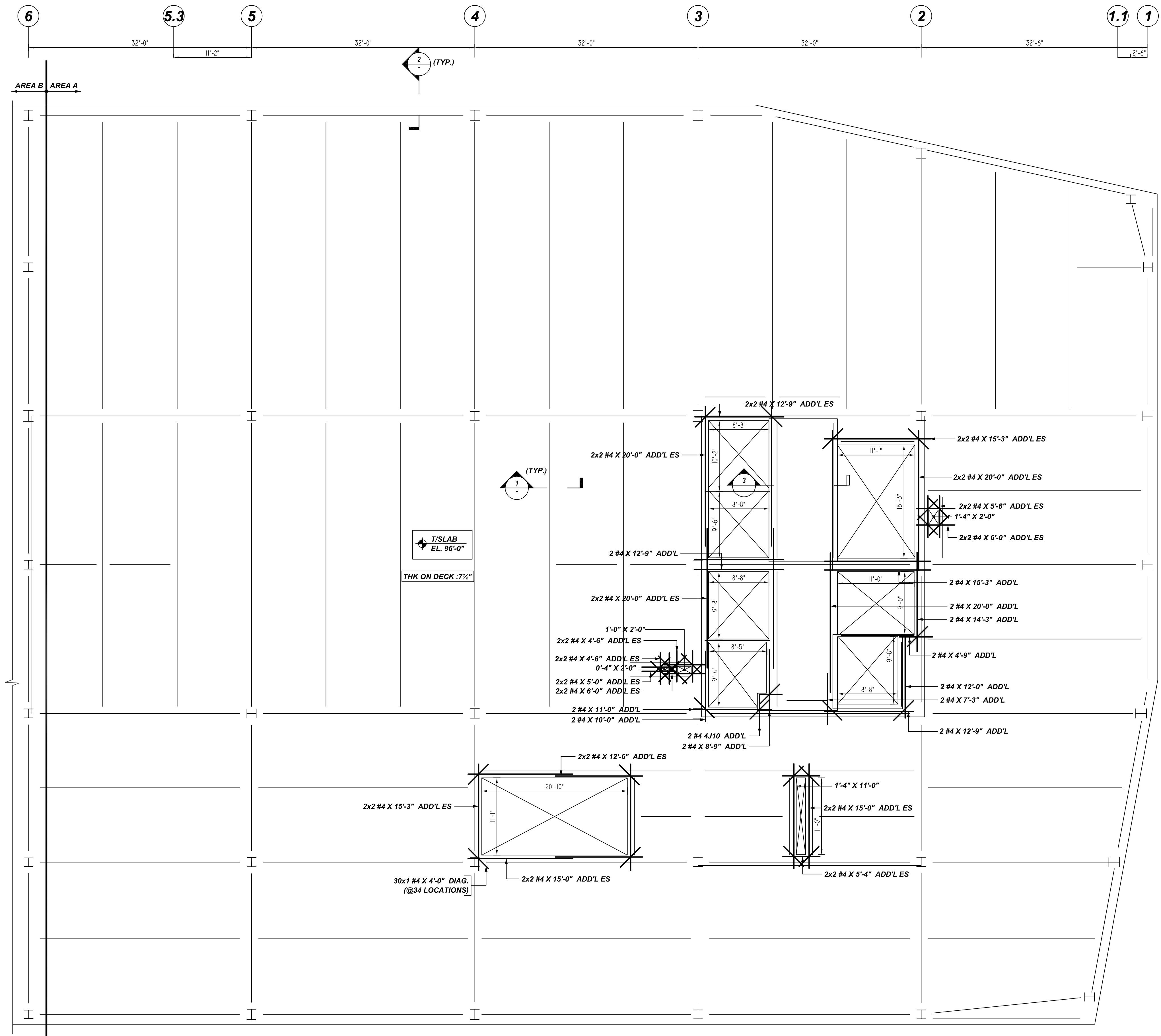
VIRGINIA TECH
 LEVEL-5 AREA-A SLAB ON DECK REINFORCEMENT DETAILS
ALEXANDRIA, VIRGINIA

CUSTOMER: -
 DESIGNER: A&F ENGINEERS

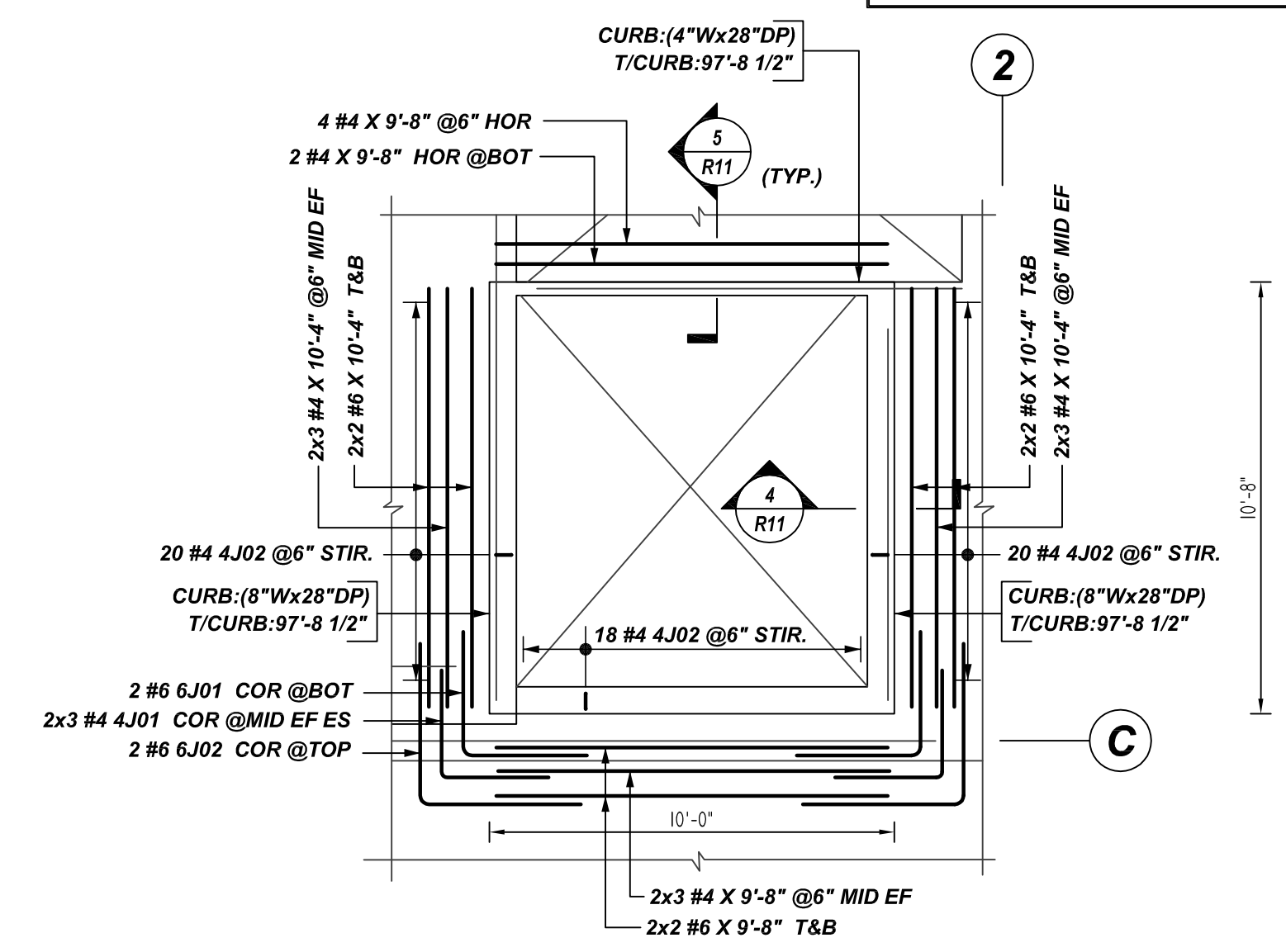
REV NO	DATE	SENT FOR	REV NO	DATE	SENT FOR	DRAWN BY	DATE	JOB NO	SHEET NO.
0	04.13.22	APPROVAL				GOW/MET	04.13.22	-	R11

NOTICE
 SHORTAGES, IMPROPER FABRICATION OR CLAIMS FOR ANY OTHER REASON MUST BE REPORTED TO THIS COMPANY WITHIN 10 DAYS FROM ORIGINAL DELIVERY. THIS COMPANY ALSO RESERVES THE RIGHT TO FIELD INSPECT MATERIALS PRIOR TO REPLACEMENT OR RECONDITIONING OF MATERIALS AND WILL NOT BE LIABLE FOR CHARGES FROM WORK DONE IN THE FIELD WITHOUT PRIOR AUTHORIZATION FROM THIS COMPANY.

REINFORCING STEEL PLACING DRAWING ONLY. USE IN CONJUNCTION WITH CONTRACT DRAWINGS & SPECIFICATIONS. ELEVATIONS & DIMENSIONS SHOWN ON DRAWING ARE FOR DETAILING PURPOSES ONLY AND SHOULD NOT BE USED FOR CONSTRUCTION UNLESS VERIFIED BY ENGINEER OR CONTRACTOR.

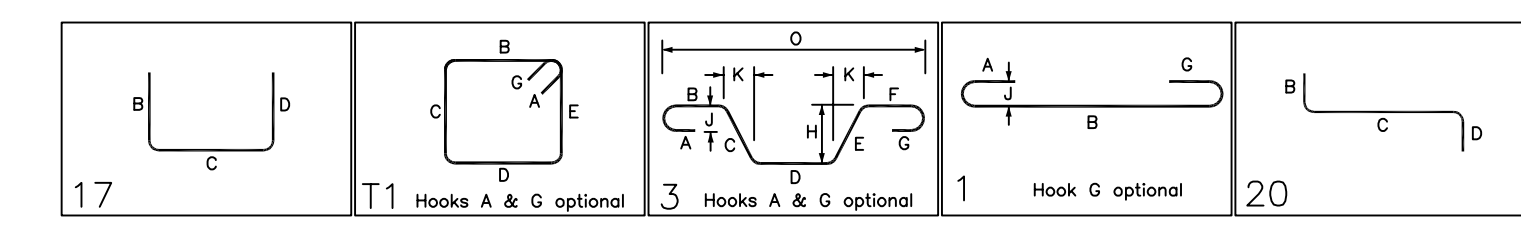


G
F.9
F
E
D
C
B
A.1
A



DETAIL-A
 REF: H/S 2.7.3
 SCALE: 1/4" = 1'-0"

Bar Mark	Qty	Size	Total Length	Type	X'	Y'	Z'	W'	V'	U'	T'	S'	R'	Q'	P'	O'	N'	M'	L'	K'	J'	I'	H'	G'	F'	E'	D'	C'	B'	A'	
401	12	#4	5'-4"	17																											
402	58	#4	5'-9"	11	0'-4"	8"																									
403	2	#4	4'-11"	3																											
404	2	#4	4'-11"	3																											
405	2	#4	4'-11"	3																											
406	40	#4	5'-0"	17																											
407	643	#4	9'-6"	1	0'-6"	9'-0"																									
408	4	#4	3'-6"	1	0'-6"	3'-0"																									
409	2	#4	3'-9"	17																											
410	2	#4	7'-8"	17																											
411	2	#4	5'-9"	20																											
412	4	#4	6'-5"	17																											
413	2	#4	4'-11"	3																											
601	2	#6	6'-2"	17																											
602	2	#6	8'-0"	17																											



A/E PLEASE VERIFY
 LAP VALUE (TYP.)

LAP SCHEDULE

4000 PSI (CLASS-B) CASE - 1
 Per ACI 318 (12.2.2)

BAR#	LENGTHS	
	TOP	OTHERS
#3	2'-0"	1'-7"
#4	2'-8"	2'-1"
#5	3'-4"	2'-7"
#6	4'-0"	3'-1"
#7	5'-10"	4'-6"
#8	6'-8"	5'-2"
#9	7'-7"	5'-10"
#10	8'-6"	6'-7"
#11	9'-5"	7'-3"

ALL TOP BARS ARE DEFINED AS
 HORIZ BARS WITH MORE THAN
 12" OF CONCRETE BELOW BARS.

A/E PLEASE VERIFY
 COVER VALUE (TYP.)

TYPICAL REINFORCING BAR CLEARANCE TABLE	
LOCATION	MIN. COVER
SLAB TOP & BOTTOM	2" CLR
SLAB EDGE	2" CLR

**ALL BARS IN THIS DRAWING
 ASTM A615 GRADE 60
 BLACK UNCOATED**

LEVEL-5 AREA-A SLAB ON DECK REINFORCEMENT DETAILS
 REF: S2.2.5A
 SCALE: 1/8" = 1'-0"

A/E PLEASE VERIFY
 FIELD CUT AND BAR ARRANGEMENT DETAILS (TYP.)

REBAR GRADE 60 ASTM A-615

SPICES USED		ABBREVIATIONS		BAR MARK SIZE EQUIVALENT	
CLASS B 4,000 psi UNO				Imperial	Soft Metric
TOP BARS	OTHER BARS	ADD.	Additional	#3	#10
#3	#3	B.O.W.	Bottom of wall	#4	#13
#4	#4	C.B.	Corner Bars	#5	#16
#5	#5	DIAG.	Diagonal	#6	#19
#6	#6	D.O.	Door Opening	#7	#22
#7	#7	DWL.	Dowels	#8	#25
#8	#8	E.F.	Each Face	#9	#29
#9	#9	E.S.	Each Side	#10	#32
#10	#10	E.W.	Each Way	#11	#36
#11	#11	FTG.	Footing		
#14	#14	F.F.	Far Face		
		HORIZ.	Horizontal		
		I.F.	Inside Face		
		INTERS.	Intersection		
		L.W.	long Way		
		N.F.	Near Face		
		O.F.	Outside Face		
		S.W.	Short Way		
		T&B	Top & Bottom		
		T.O.W.	Top of Wall		
		Trans.	Transverse		
		VERT.	Vertical		

REV NO	DATE	SENT FOR	REV NO	DATE	SENT FOR
0	04.13.22	APPROVAL			

VIRGINIA TECH
 LEVEL-5 AREA-A SLAB ON DECK REINFORCEMENT DETAILS
ALEXANDRIA, VIRGINIA

CUSTOMER: -			
DESIGNER: A&F ENGINEERS			
DRAWN BY	DATE	JOB NO	SHEET NO.
GOW/MET	04.13.22	-	R12