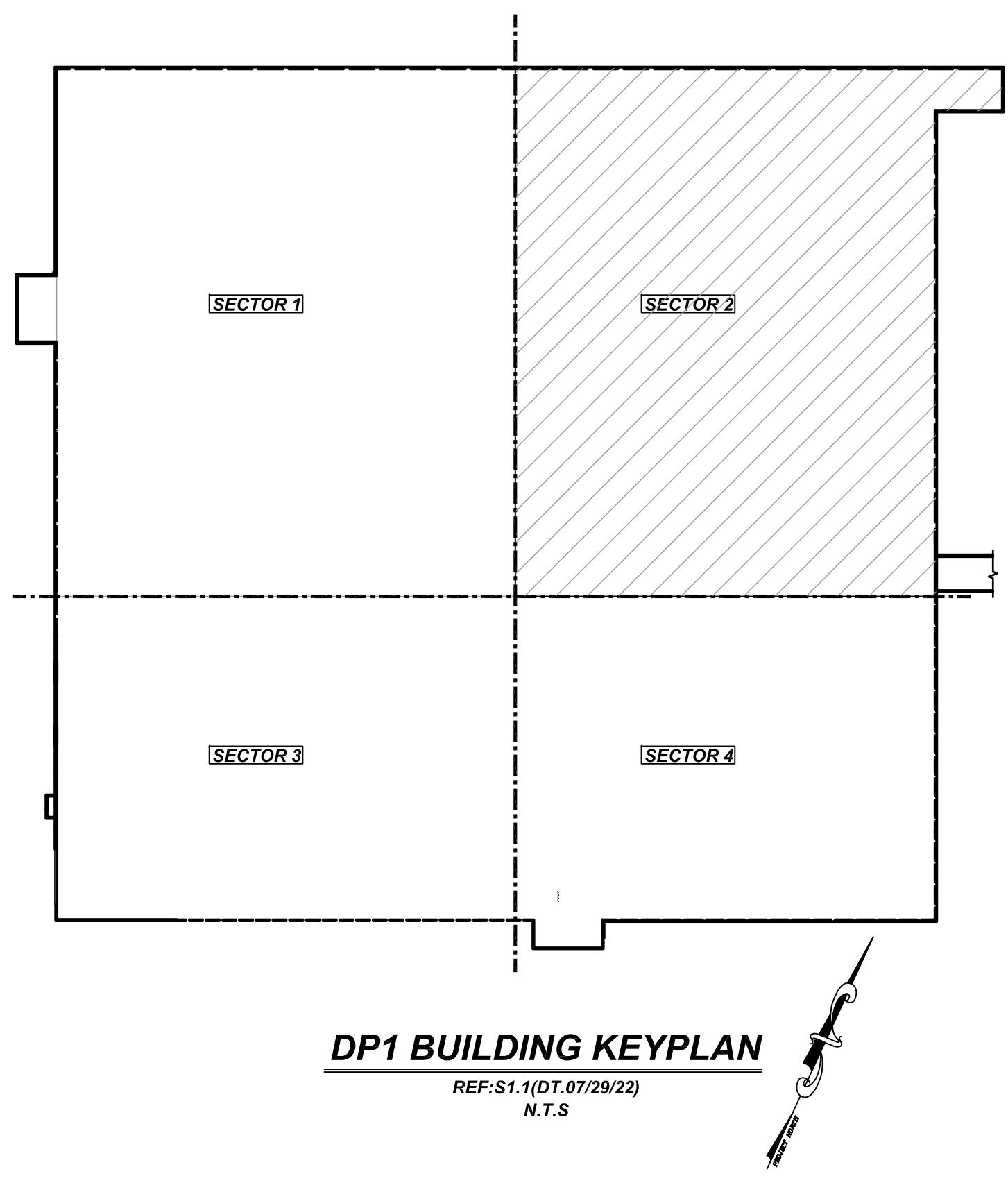
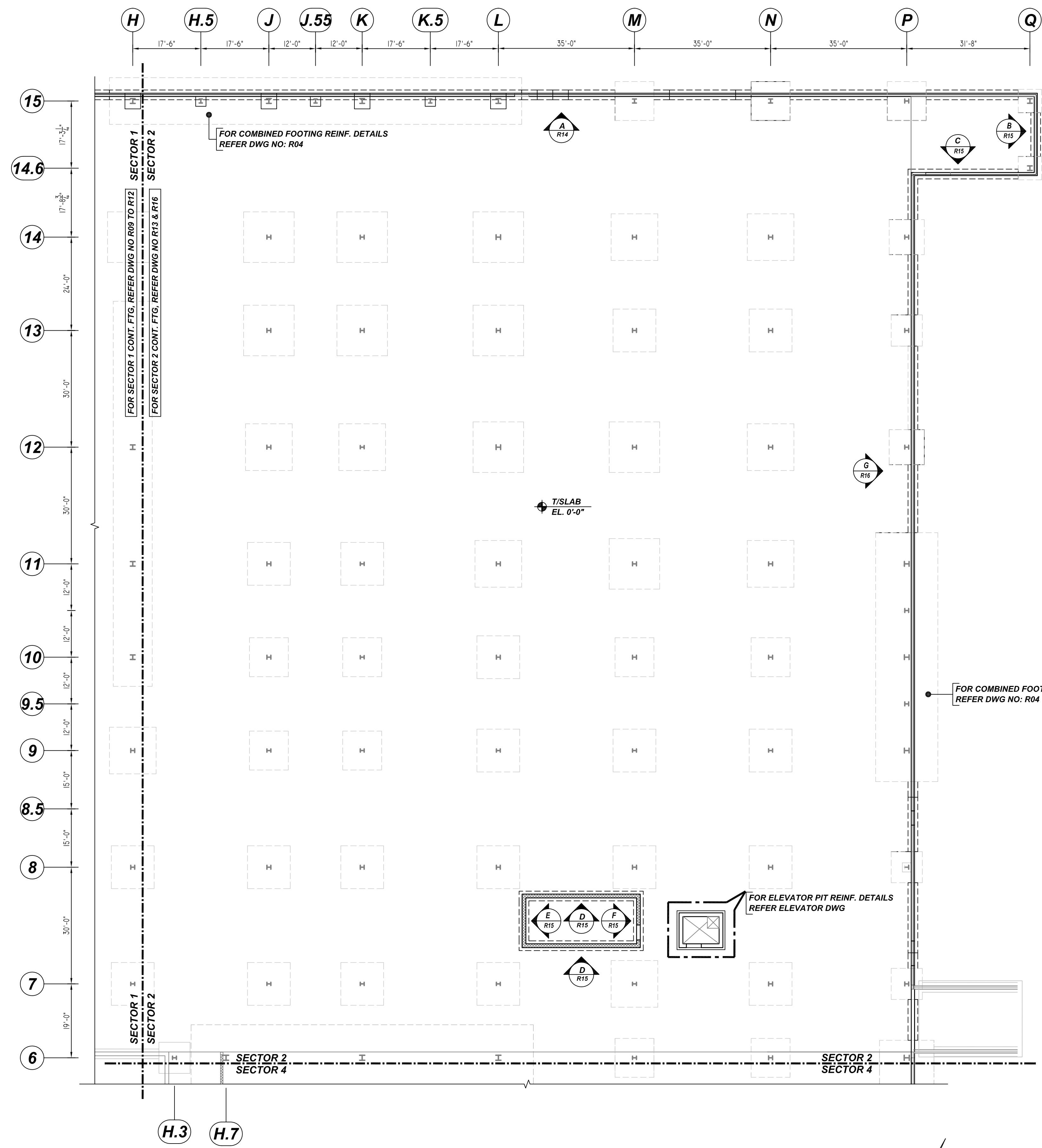


NOTICE
 SHORTAGES, IMPROPER FABRICATION OR CLAIMS FOR ANY OTHER REASON MUST BE REPORTED TO THIS COMPANY WITHIN 10 DAYS FROM ORIGINAL DELIVERY. THIS COMPANY ALSO RESERVES THE RIGHT TO FIELD INSPECT MATERIALS PRIOR TO REPLACEMENT OR RECONDITIONING OF MATERIALS AND WILL NOT BE LIABLE FOR CHARGES FROM WORK DONE IN THE FIELD WITHOUT PRIOR AUTHORIZATION FROM THIS COMPANY.

REINFORCING STEEL PLACING DRAWING ONLY. USE IN CONJUNCTION WITH CONTRACT DRAWINGS & SPECIFICATIONS. ELEVATIONS & DIMENSIONS SHOWN ON DRAWING ARE FOR DETAILING PURPOSES ONLY AND SHOULD NOT BE USED FOR CONSTRUCTION UNLESS VERIFIED BY ENGINEER OR CONTRACTOR.



DP-1 BUILDING SECTOR 2 CONTINUOUS FOOTING & WALL DOWEL REINFORCEMENT DETAILS

REF: S2.1.2(DT.07/29/22)
 SCALE: 1/16" = 1'-0"

TYPICAL REINFORCING BAR CLEARANCE TABLE

LOCATION	MIN. COVER
FOOTING SIDE & BOTTOM	3" CLR
FOOTING TOP	2" CLR
WALL TOP	1.5" CLR

A/E PLEASE VERIFY
 FTG & WALL TOP COVER

REBAR GRADE 60 ASTM A-615

SPLICES USED		ABBREVIATIONS		BAR MARK SIZE EQUIVALENT	
CLASS B 4,500 psi UNO				Imperial	Soft Metric
TOP BARS	OTHER BARS	ADD. = Additional	DWLS. = Dowels	#3	#10
#3 24"	#3 19"	B.O.W. = Bottom of wall	D.O. = Door Opening	#4	#13
#4 32"	#4 24"	C.B. = Corner Bars	E.F. = Each Face	#5	#16
#5 39"	#5 30"	DIAG. = Diagonal	E.S. = Each Side	#6	#19
#6 46"	#6 36"	F.F. = Far Face	E.W. = Each Way	#7	#22
#7 67"	#7 52"	HORIZ. = Horizontal	FTG. = Footing	#8	#25
#8 77"	#8 59"	I.F. = Inside Face	F.F. = Far Face	#9	#29
#9 86"	#9 67"	INTERS. = Intersection	HORIZ. = Horizontal	#10	#32
#10 95"	#10 73"	L.W. = Long Way	I.F. = Inside Face	#11	#36
#11 104"	#11 81"	N.F. = Near Face	INTERS. = Intersection		
#14		O.F. = Outside Face	L.W. = Long Way		
		S.W. = Short Way	N.F. = Near Face		
		T&B = Top & Bottom	O.F. = Outside Face		
		T.O.W. = Top of Wall	S.W. = Short Way		
		Trans. = Transverse	T&B = Top & Bottom		
		VERT. = Vertical	T.O.W. = Top of Wall		

STA PHARMACEUTICAL MIDDLETOWN EXPANSION DP-1
 DP-1 BUILDING SECTOR 2 CONTINUOUS FOOTING & WALL DOWEL REINFORCEMENT DETAILS
MIDDLETOWN, DE 19709

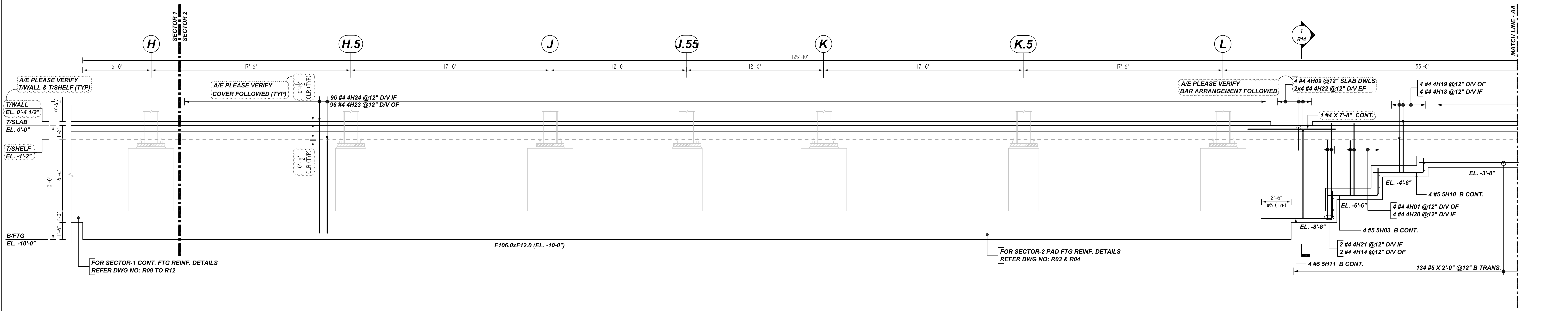
CUSTOMER: -
 DESIGNER: -

REV NO	DATE	SENT FOR	REV NO	DATE	SENT FOR
0	08.18.22	APPROVAL			

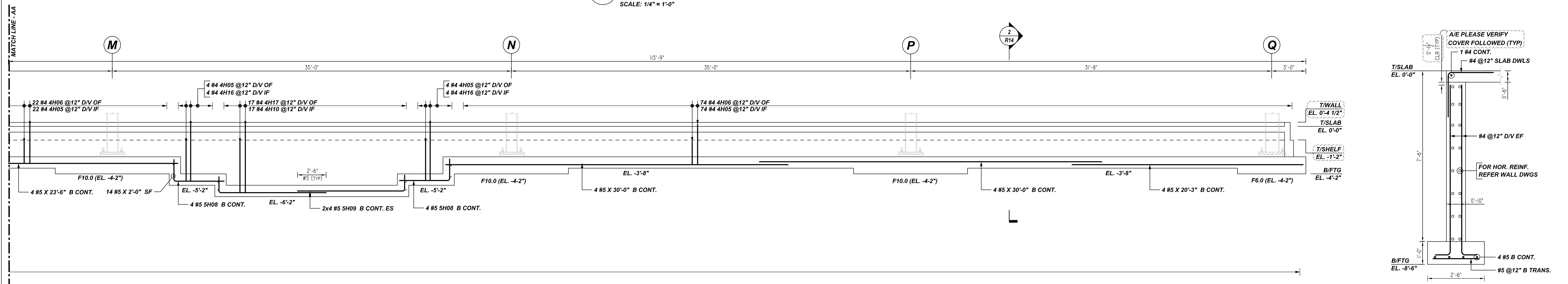
DRAWN BY	DATE	JOB NO	SHEET NO.
JSN/MET	08.18.22	-	R13

NOTICE
 SHORTAGES, IMPROPER FABRICATION OR CLAIMS FOR ANY OTHER REASON MUST BE REPORTED TO THIS COMPANY WITHIN 10 DAYS FROM ORIGINAL DELIVERY. THIS COMPANY ALSO RESERVES THE RIGHT TO FIELD INSPECT MATERIALS PRIOR TO REPLACEMENT OR RECONDITIONING OF MATERIALS AND WILL NOT BE LIABLE FOR CHARGES FROM WORK DONE IN THE FIELD WITHOUT PRIOR AUTHORIZATION FROM THIS COMPANY.

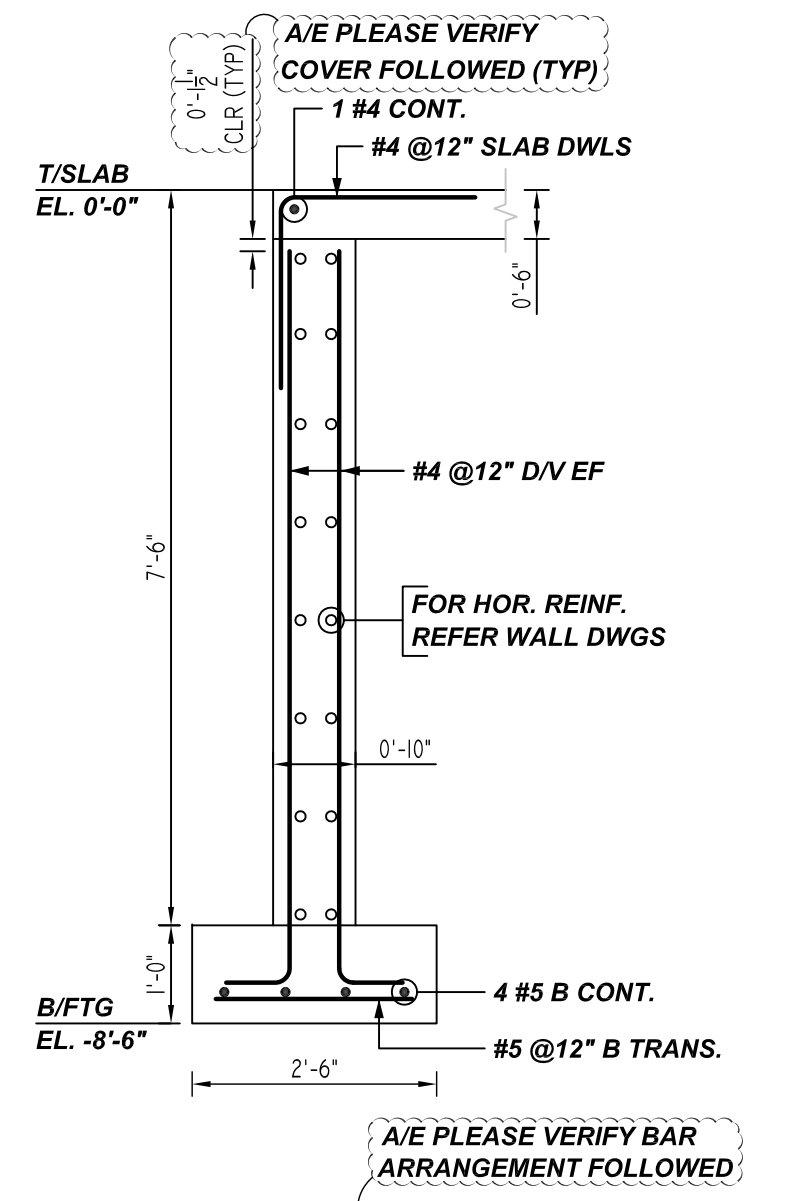
REINFORCING STEEL PLACING DRAWING ONLY. USE IN CONJUNCTION WITH CONTRACT DRAWINGS & SPECIFICATIONS. ELEVATIONS & DIMENSIONS SHOWN ON DRAWING ARE FOR DETAILING PURPOSES ONLY AND SHOULD NOT BE USED FOR CONSTRUCTION UNLESS VERIFIED BY ENGINEER OR CONTRACTOR.



A ELEVATION
 REF: S2.1.2 & 3/S5.1 (DT.07/29/22)
 SCALE: 1/4" = 1'-0"



A ELEVATION
 REF: S2.1.2 & 3/S5.1 (DT.07/29/22)
 SCALE: 1/4" = 1'-0"



1 SECTION
 R14 REF: 4/S3.1 (DT.07/29/22)
 SCALE: 1/2" = 1'-0"

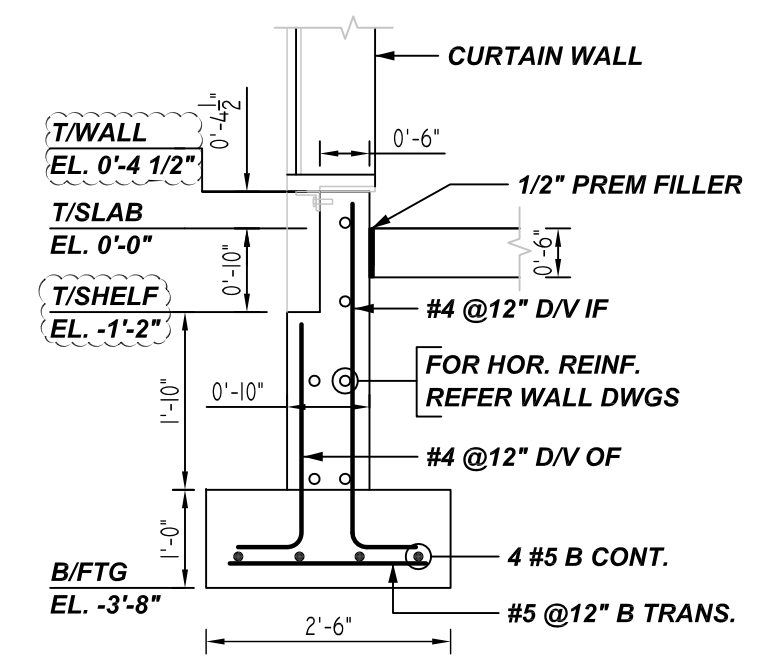
Release Number: R14

Bar Mark	Qty	Size	Total Length	Type	X	Y	Z	W	V	U	T	S	R	Q	P	O	N	M	L	K	J	I	H	G	F	E	D	C	B	A
4K1	4	#4	5'-8"	2	0'-8"																									
4K5	104	#4	4'-2"	2	0'-8"																									
4K6	96	#4	2'-8"	2	0'-8"																									
4K9	4	#4	4'-0"	17	2'-0"																									
4H0	17	#4	6'-8"	2	0'-8"																									
4H4	2	#4	7'-8"	2	0'-8"																									
4H6	8	#4	5'-8"	2	0'-8"																									
4H7	17	#4	5'-2"	2	0'-8"																									
4H8	4	#4	5'-0"	2	0'-8"																									
4H9	4	#4	3'-8"	2	0'-8"																									
4K0	4	#4	7'-0"	2	0'-8"																									
4K1	2	#4	9'-0"	2	0'-8"																									
4K2	8	#4	7'-8"	2	0'-8"																									
4K3	96	#4	8'-9"	2	0'-8"																									
4K4	96	#4	10'-4"	2	0'-8"																									
5H3	4	#5	6'-10"	17	2'-5"																									
5H8	8	#5	6'-4"	17	1'-11"																									
5H9	8	#5	10'-10"	17	1'-5"																									
5H10	4	#5	5'-8"	17	1'-5"																									
5H11	4	#5	8'-8"	17	2'-5"																									

TYPICAL REINFORCING BAR CLEARANCE TABLE

LOCATION	MIN. COVER
FOOTING SIDE & BOTTOM	3" CLR
FOOTING TOP	2" CLR
WALL TOP	1.5" CLR

A/E PLEASE VERIFY FTG & WALL TOP COVER



2 SECTION
 R14 REF: 2/S3.1 (DT.07/29/22)
 SCALE: 1/2" = 1'-0"

REBAR GRADE 60 ASTM A-615

SPLICES USED

CLASS B 4,500 psi UNO

TOP BARS	OTHER BARS
#3 24"	#3 19"
#4 32"	#4 24"
#5 39"	#5 30"
#6 46"	#6 36"
#7 67"	#7 52"
#8 77"	#8 59"
#9 86"	#9 67"
#10 95"	#10 73"
#11 104"	#11 81"
#14	#14

ABBREVIATIONS

ADD. = Additional
 B.O.W. = Bottom of wall
 C.B. = Corner Bars
 DIAG. = Diagonal
 D.O. = Door Opening
 DWLS. = Dowels
 E.F. = Each Face
 E.S. = Each Side
 E.W. = Each Way
 FTG. = Footing
 F.F. = Far Face
 HORIZ. = Horizontal
 I.F. = Inside Face
 INTERS. = Intersection
 L.W. = long Way
 N.F. = Near Face
 O.F. = Outside Face
 S.W. = Short Way
 T&B = Top & Bottom
 T.O.W. = Top of Wall
 Trans. = Transverse
 VERT. = Vertical

BAR MARK SIZE EQUIVALENT

Imperial	Soft Metric
#3	#10
#4	#13
#5	#16
#6	#19
#7	#22
#8	#25
#9	#29
#10	#32
#11	#36

STA PHARMACEUTICAL MIDDLETOWN EXPANSION DP-1
 DP-1 BUILDING SECTOR 2 CONTINUOUS FOOTING & WALL DOWEL REINFORCEMENT DETAILS
MIDDLETOWN, DE 19709

CUSTOMER: -
 DESIGNER: -

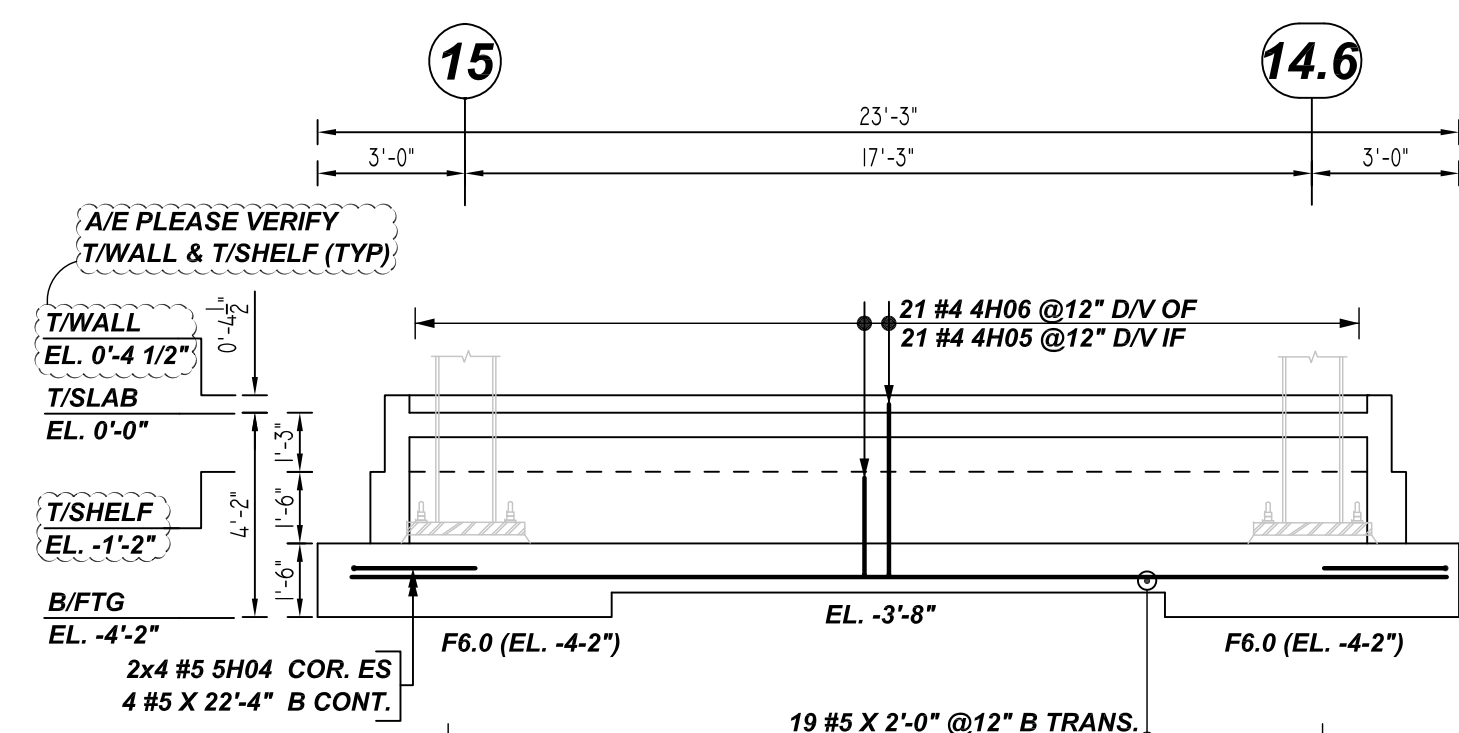
REV NO	DATE	SENT FOR	REV NO	DATE	SENT FOR
0	08.18.22	APPROVAL			

DRAWN BY	DATE	JOB NO	SHEET NO.
JSN/MET	08.18.22	-	R14

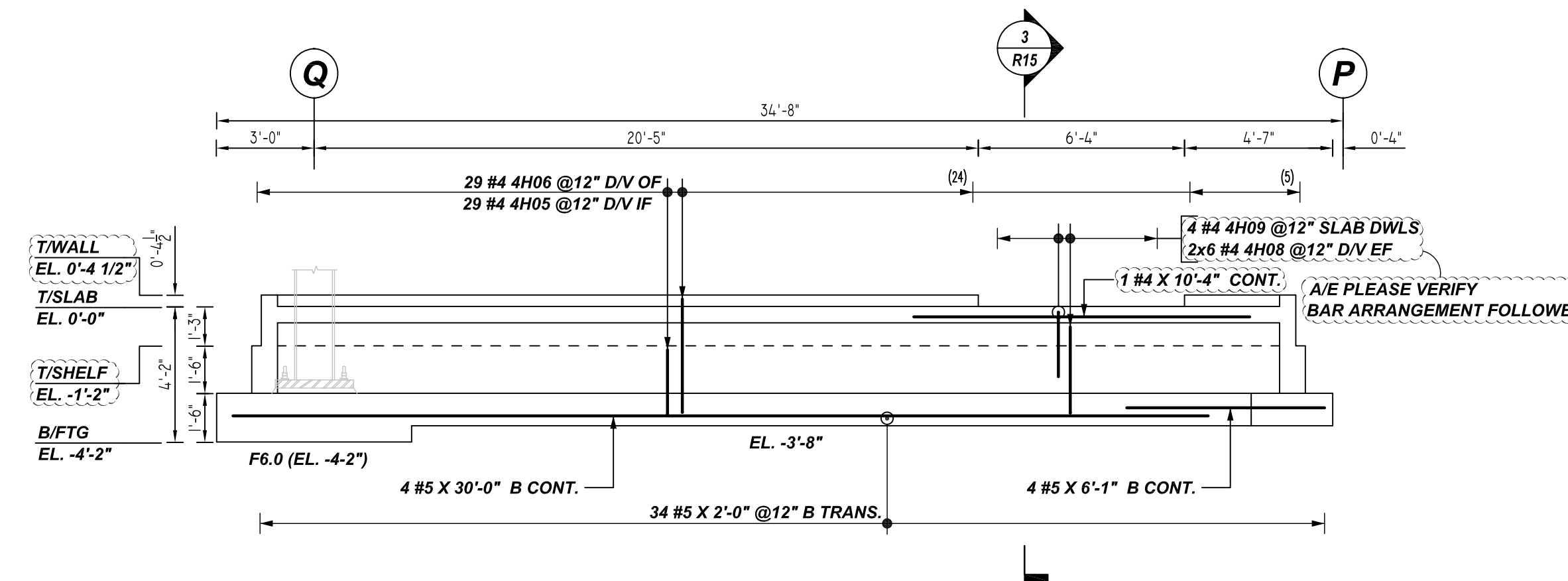
NOTICE

SHORTAGES, IMPROPER FABRICATION OR CLAIMS FOR ANY OTHER REASON MUST BE REPORTED TO THIS COMPANY WITHIN 10 DAYS FROM ORIGINAL DELIVERY. THIS COMPANY ALSO RESERVES THE RIGHT TO FIELD INSPECT MATERIALS PRIOR TO REPLACEMENT OR RECONDITIONING OF MATERIALS AND WILL NOT BE LIABLE FOR CHARGES FROM WORK DONE IN THE FIELD WITHOUT PRIOR AUTHORIZATION FROM THIS COMPANY.

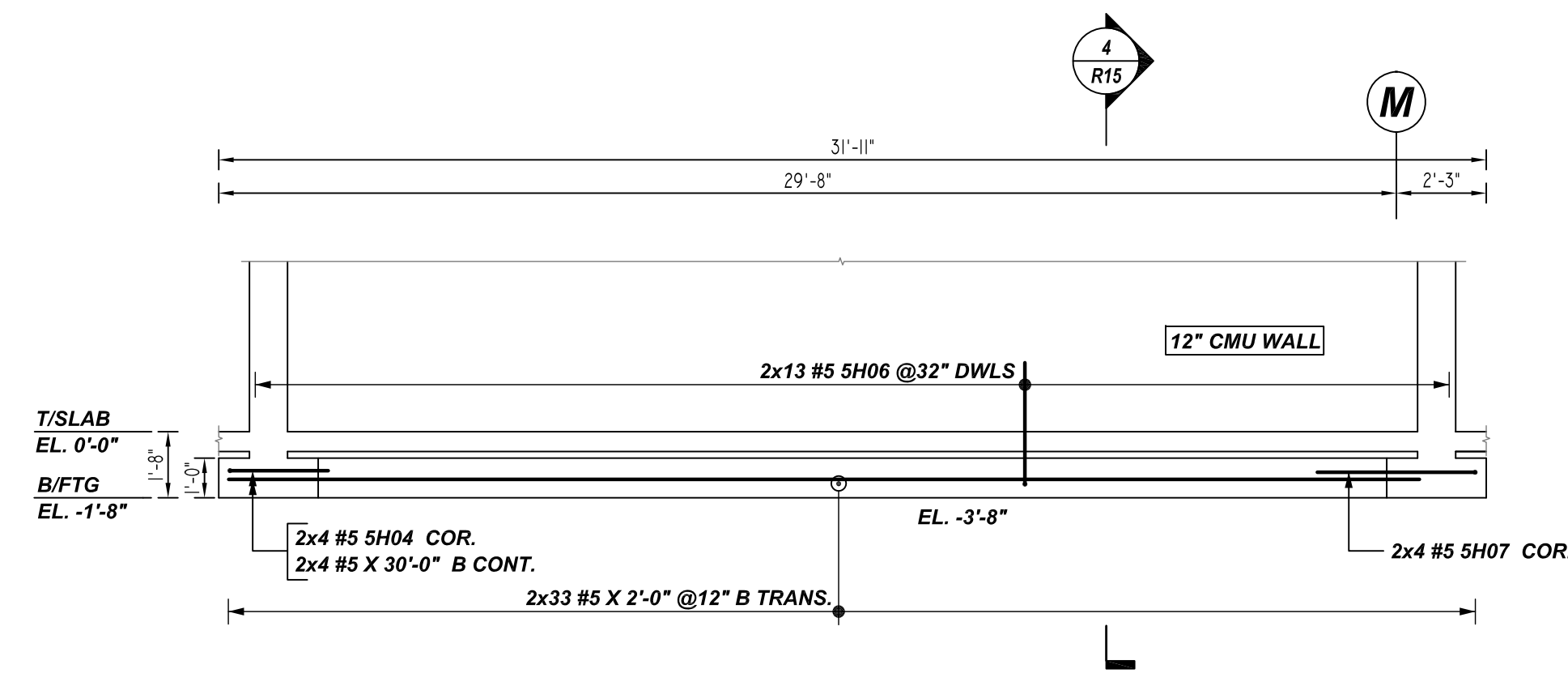
REINFORCING STEEL PLACING DRAWING ONLY. USE IN CONJUNCTION WITH CONTRACT DRAWINGS & SPECIFICATIONS. ELEVATIONS & DIMENSIONS SHOWN ON DRAWING ARE FOR DETAILING PURPOSES ONLY AND SHOULD NOT BE USED FOR CONSTRUCTION UNLESS VERIFIED BY ENGINEER OR CONTRACTOR.



B ELEVATION
REF: S2.1.2 & 3/S5.1 (DT.07/29/22)
SCALE: 1/4" = 1'-0"

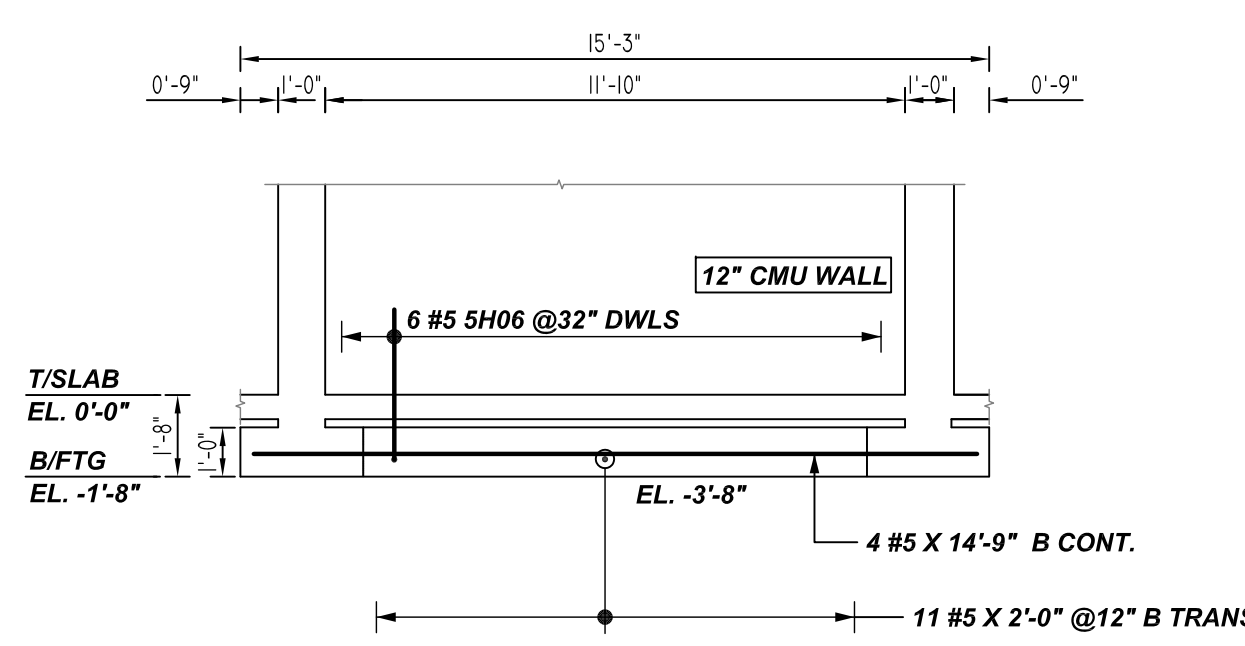


C ELEVATION
REF: S2.1.2 & 3/S5.1 (DT.07/29/22)
SCALE: 1/4" = 1'-0"

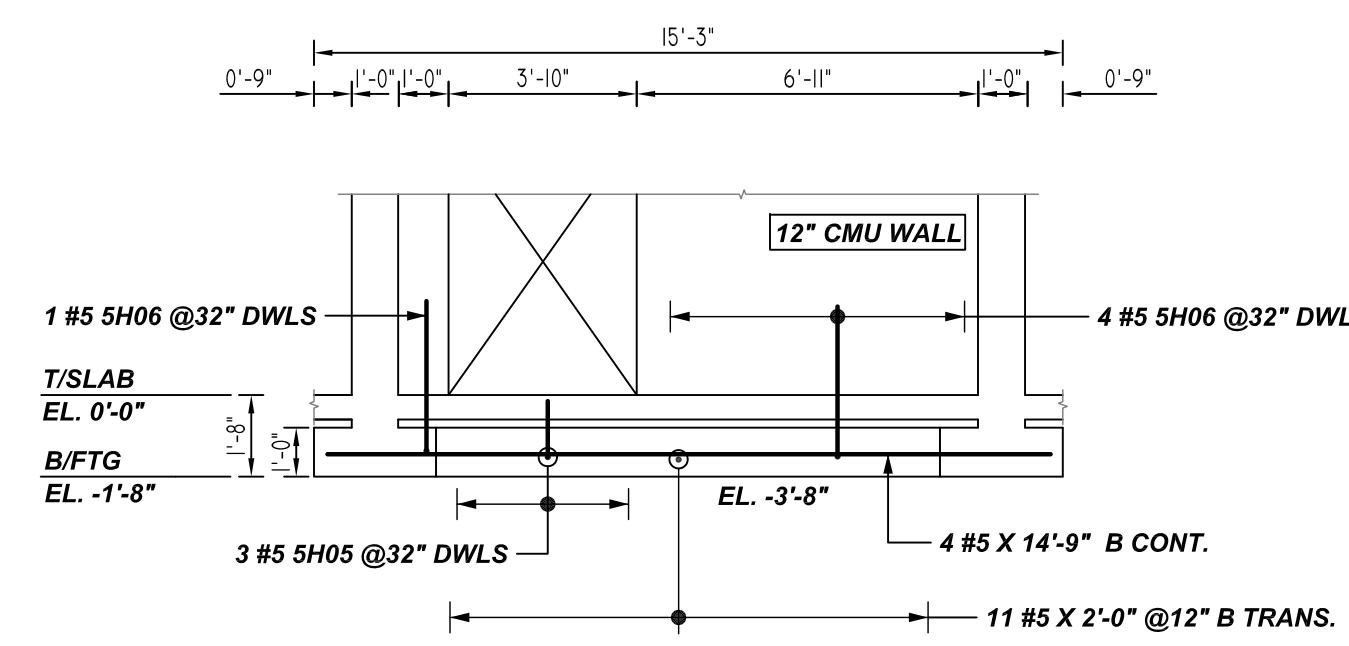


D ELEVATION
REF: S2.1.2 & 3/S5.1 (DT.07/29/22)
SCALE: 1/4" = 1'-0"
(2x LOCATIONS)

A/E PLEASE VERIFY CMU REINF. & LAP FOLLOWED (TYP)



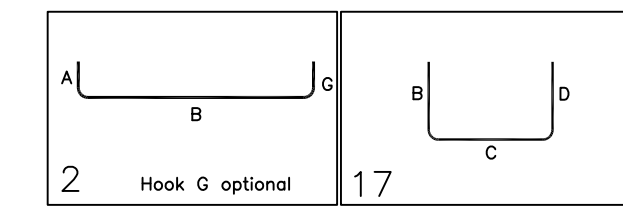
E ELEVATION
REF: S2.1.2 & 3/S5.1 (DT.07/29/22)
SCALE: 1/4" = 1'-0"



F ELEVATION
REF: S2.1.2 & 3/S5.1 (DT.07/29/22)
SCALE: 1/4" = 1'-0"

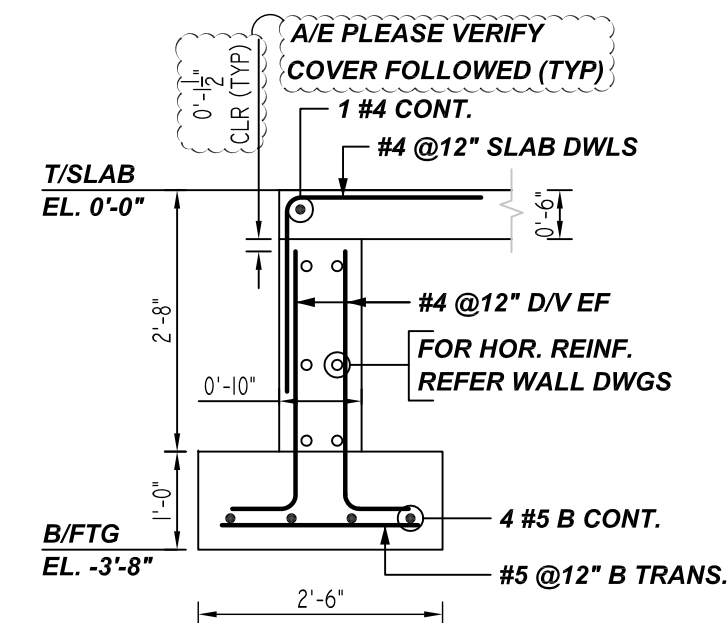
Release Number: R15

Bar Mark	Qty	Size	Total Length	Type	X'	Y'	Z'	W'	V'	U'	T'	S'	R'	Q'	P'	O'	N'	M'	L'	K'	J'	I'	H'	G'	F'	E'	D'	C'	B'	A'	
4#06	50	#4	4'-2"	2	0'-6"	3'-6"																									
4#06	12	#4	2'-6"	2	0'-6"	2'-0"																									
4#06	12	#4	3'-4"	2	0'-6"	2'-6"																									
4#04	4	#4	4'-0"	17	2'-0"	2'-0"																									
5#04	18	#5	5'-0"	17	2'-6"	2'-6"																									
5#05	3	#5	2'-0"	2	0'-10"	1'-2"																									
5#06	37	#5	3'-11"	2	0'-10"	3'-1"																									
5#07	8	#5	8'-0"	17	4'-0"	4'-0"																									

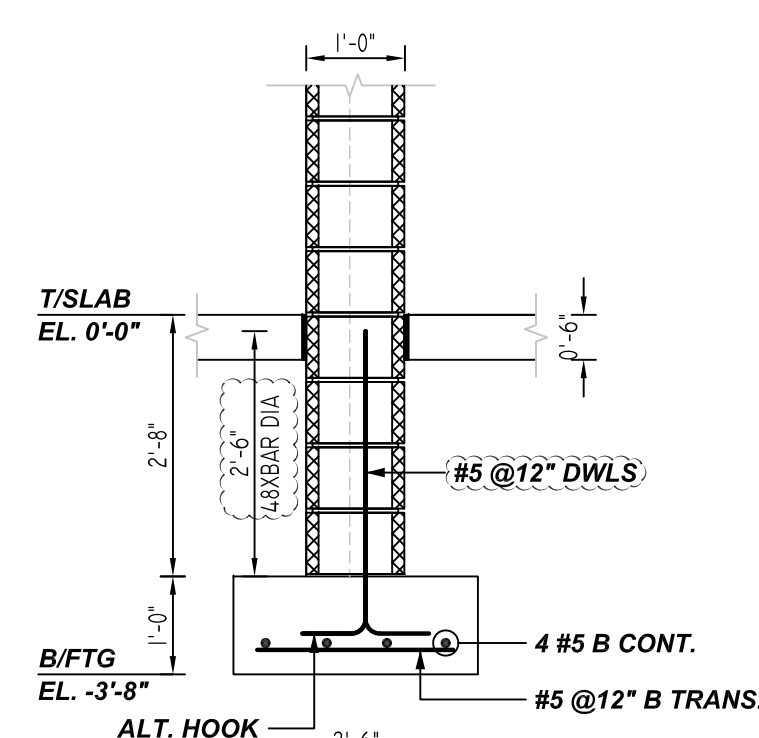


LOCATION	MIN. COVER
FOOTING SIDE & BOTTOM	3" CLR
FOOTING TOP	2" CLR
WALL TOP	1.5" CLR

A/E PLEASE VERIFY FTG & WALL TOP COVER



3 SECTION
R15 REF: 4/S3.1 (DT.07/29/22)
SCALE: 1/2" = 1'-0"



4 SECTION
R15 REF: 12/S3.1 (DT.07/29/22)
SCALE: 1/2" = 1'-0"

REBAR GRADE 60 ASTM A-615		
SPLICES USED		
CLASS B 4,500 psi UNO	ABBREVIATIONS	BAR MARK SIZE EQUIVALENT
TOP BARS	ADD. = Additional	Imperial
#3 24"	B.O.W. = Bottom of wall	Soft Metric
#4 32"	C.B. = Corner Bars	
#5 39"	DIAG. = Diagonal	
#6 46"	D.O. = Door Opening	
#7 67"	D.W.L.S. = Dowels	
#8 77"	E.F. = Each Face	
#9 86"	E.S. = Each Side	
#10 95"	E.W. = Each Way	
#11 104"	FTG. = Footing	
#14 144"	F.F. = Far Face	
	HORIZ. = Horizontal	
	I.F. = Inside Face	
	INTERS. = Intersection	
	L.W. = Long Way	
	N.F. = Near Face	
	O.F. = Outside Face	
	S.W. = Short Way	
	T&B = Top & Bottom	
	T.O.W. = Top of Wall	
	Trans. = Transverse	
	VERT. = Vertical	

STA PHARMACEUTICAL MIDDLETOWN EXPANSION DP-1
DP-1 BUILDING SECTOR 2 CONTINUOUS FOOTING & WALL DOWEL REINFORCEMENT DETAILS

MIDDLETOWN, DE 19709

CUSTOMER: -
DESIGNER: -

REV NO	DATE	APPROVAL	REV NO	DATE	SENT FOR
0	08.18.22				

DRAWN BY	DATE	JOB NO	SHEET NO.
JSN/MET	08.18.22	-	R15

