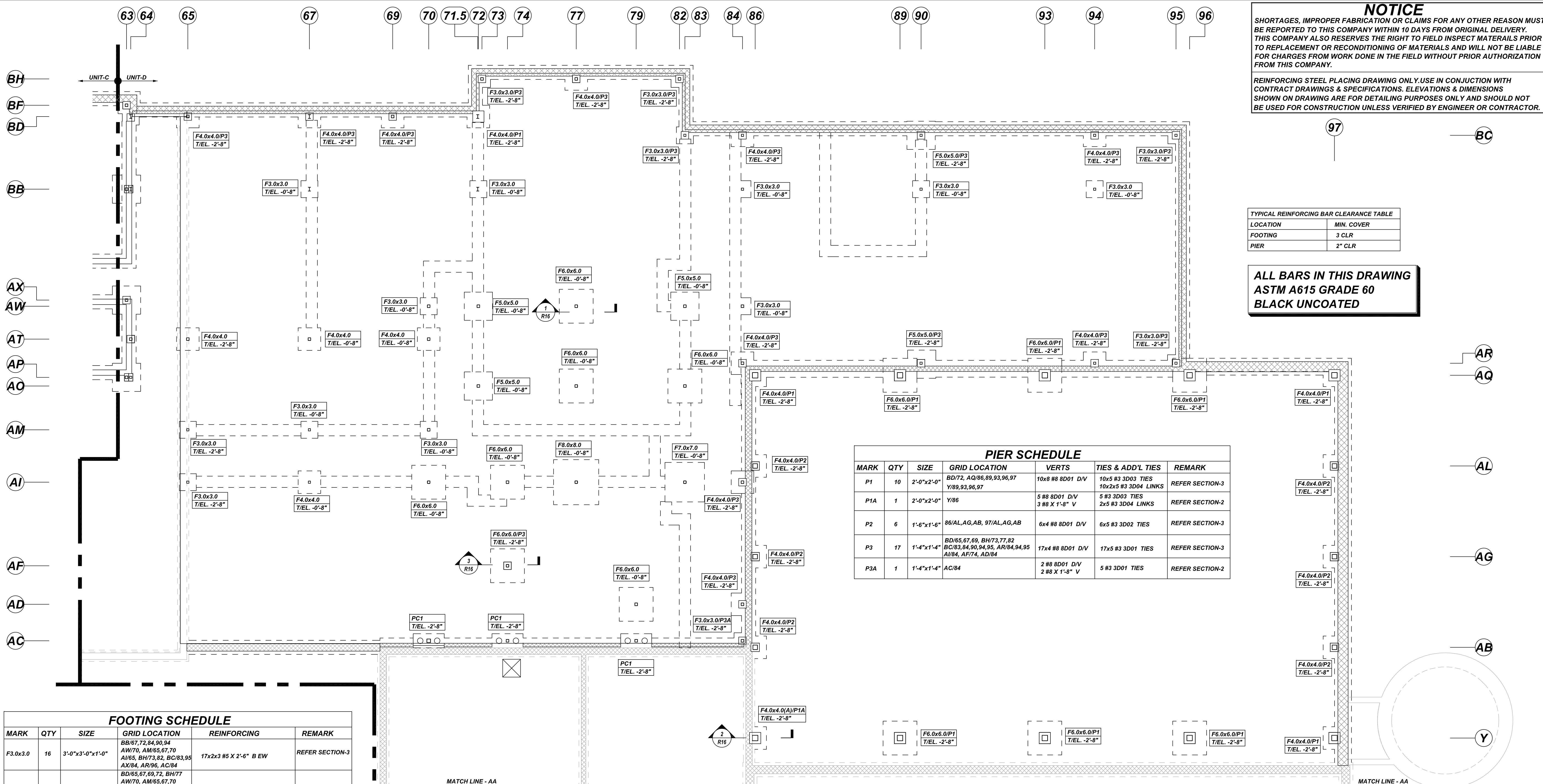


**NOTICE**  
 SHORTAGES, IMPROPER FABRICATION OR CLAIMS FOR ANY OTHER REASON MUST BE REPORTED TO THIS COMPANY WITHIN 10 DAYS FROM ORIGINAL DELIVERY. THIS COMPANY ALSO RESERVES THE RIGHT TO FIELD INSPECT MATERIALS PRIOR TO REPLACEMENT OR RECONDITIONING OF MATERIALS AND WILL NOT BE LIABLE FOR CHARGES FROM WORK DONE IN THE FIELD WITHOUT PRIOR AUTHORIZATION FROM THIS COMPANY.

REINFORCING STEEL PLACING DRAWING ONLY. USE IN CONJUNCTION WITH CONTRACT DRAWINGS & SPECIFICATIONS. ELEVATIONS & DIMENSIONS SHOWN ON DRAWING ARE FOR DETAILING PURPOSES ONLY AND SHOULD NOT BE USED FOR CONSTRUCTION UNLESS VERIFIED BY ENGINEER OR CONTRACTOR.



TYPICAL REINFORCING BAR CLEARANCE TABLE

LOCATION	MIN. COVER
FOOTING	3 CLR
PIER	2" CLR

**ALL BARS IN THIS DRAWING  
 ASTM A615 GRADE 60  
 BLACK UNCOATED**

**PIER SCHEDULE**

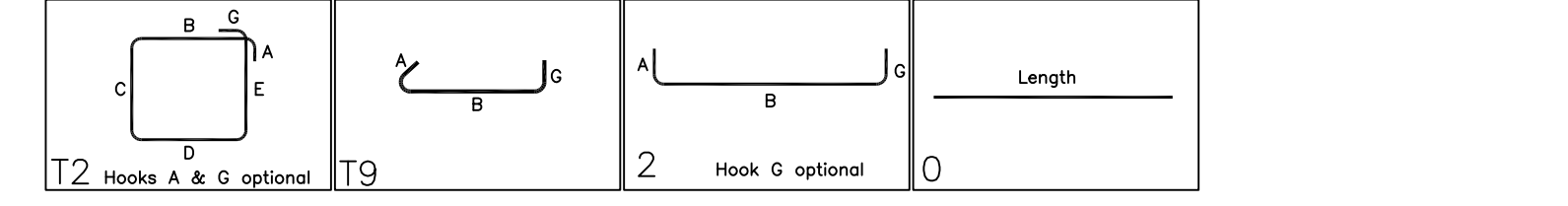
MARK	QTY	SIZE	GRID LOCATION	VERTS	TIES & ADD'L TIES	REMARK
P1	10	2'-0"x2'-0"	BD/72, AQ/86,89,93,96,97 Y/89,93,96,97	10x8 #8 8D01 D/V	10x5 #3 3D03 TIES 10x2x5 #3 3D04 LINKS	REFER SECTION-3
P1A	1	2'-0"x2'-0"	Y/86	5 #8 8D01 D/V 3 #8 X 1'-8" V	5 #3 3D03 TIES 2x5 #3 3D04 LINKS	REFER SECTION-2
P2	6	1'-6"x1'-6"	86/AL,AG,AB, 97/AL,AG,AB	6x4 #8 8D01 D/V	6x5 #3 3D02 TIES	REFER SECTION-3
P3	17	1'-4"x1'-4"	BD/65,67,69, BH/73,77,82 BC/83,84,90,94,95, AR/84,94,95 AI/84, AF/74, AD/84	17x4 #8 8D01 D/V	17x5 #3 3D01 TIES	REFER SECTION-3
P3A	1	1'-4"x1'-4"	AC/84	2 #8 8D01 D/V 2 #8 X 1'-8" V	5 #3 3D01 TIES	REFER SECTION-2

**FOOTING SCHEDULE**

MARK	QTY	SIZE	GRID LOCATION	REINFORCING	REMARK
F3.0x3.0	16	3'-0"x3'-0"x1'-0"	BB/67,72,84,90,94 AW/70, AM/65,67,70 AI/65, BH/73,82, BC/83,95 AX/84, AR/96, AC/84	17x2x3 #5 X 2'-6" B EW	REFER SECTION-3
F4.0x4.0	24	4'-0"x4'-0"x1'-0"	BD/65,67,69,72, BH/77 AW/70, AM/65,67,70 BC/84,94, AT/65,67,70 AI/67, AR/84,94, AQ/86,97 97/AL, AQ, AB, Y 84/AI, AD 86/AL, AG, AB	24x2x6 #5 X 3'-6" B EW	REFER SECTION-3
F4.0x4.0(A)	1	4'-0"x2'-6"x1'-0"	Y/86	6 #5 X 3'-6" B LW 6 #5 X 2'-0" B SW 3 #5 X 2'-0" D&E DWLS. HILTI HIT HY 200	REFER SECTION-2
F5.0x5.0	5	5'-0"x5'-0"x1'-0"	AW/72,83, BC/90, AO/72, AR/90	5x2x5 #6 X 4'-6" B EW	REFER SECTION-3
F6.0x6.0	13	6'-0"x6'-0"x1'-1"	AI/77, AO/77,83 AI/70,74, AF/74, AO/79 AI/70,74, AF/74, AD/79 AQ/96,93,89, Y/89,93,96	5x2x7 #6 X 5'-6" B EW	REFER SECTION-3
F7.0x7.0	1	7'-0"x7'-0"x1'-3"	AI/83	2x7 #7 X 6'-6" B EW	REFER SECTION-3
F7.0x7.0	1	8'-0"x8'-0"x1'-3"	AI/77	2x9 #7 X 8'-6" B EW	REFER SECTION-3
PC1	3	5'-6"x2'-6"x2'-8"	AC/70,74,79	3x2x3 #4 X 5'-0" T&B LW 3x2x4 #4 4D01 TIES	REFER SECTION REF.6/R18

Release Number: R15  
 BMR LIST

Bar Mark	Qty	Size	Total Length	Type	X	Y	Z	W	V	U	T	S	R	Q	P	O	N	M	L	K	J	I	H	G	F	E	D	C	B	A
3001	90	F3	4'-0"	T2	0'-4"	1'-0"	1'-0"	1'-0"	1'-0"	1'-0"	1'-0"	1'-0"	1'-0"	1'-0"	1'-0"	1'-0"	1'-0"	1'-0"	1'-0"	1'-0"	1'-0"	1'-0"	1'-0"	1'-0"	1'-0"	1'-0"	1'-0"	1'-0"	1'-0"	1'-0"



Release Number: R15 HILTI HIT HY 200  
 BMR LIST

Bar Mark	Qty	Size	Total Length	Type	X	Y	Z	W	V	U	T	S	R	Q	P	O	N	M	L	K	J	I	H	G	F	E	D	C	B	A
0501	3	F3	7'-0"	T2	0'-4"	1'-0"	1'-0"	1'-0"	1'-0"	1'-0"	1'-0"	1'-0"	1'-0"	1'-0"	1'-0"	1'-0"	1'-0"	1'-0"	1'-0"	1'-0"	1'-0"	1'-0"	1'-0"	1'-0"	1'-0"	1'-0"	1'-0"	1'-0"	1'-0"	1'-0"



**LAP SCHEDULE**  
 3000 PSI (CLASS-B) CASE - 1  
 Per ACI 318 (12.2.2)

BAR#	TOP	OTHERS
#3	2'-4"	1'-10"
#4	3'-1"	2'-5"
#5	3'-11"	3'-0"
#6	4'-8"	3'-7"
#7	6'-9"	5'-3"
#8	7'-9"	6'-0"
#9	8'-9"	6'-9"
#10	9'-10"	7'-7"
#11	10'-11"	8'-5"

**REBAR GRADE 60 ASTM A-615**

SPLICES USED		ABBREVIATIONS		BAR MARK SIZE EQUIVALENT	
CLASS B 4,000 psi UNO				Imperial	Soft Metric
TOP BARS	OTHER BARS	ADD.	= Additional	#3	#10
#3 24"	#3 19"	B.O.W.	= Bottom of wall	#4	#13
#4 32"	#4 25"	C.B.	= Corner Bars	#5	#16
#5 40"	#5 31"	DIAG.	= Diagonal	#6	#19
#6 48"	#6 37"	D.O.	= Door Opening	#7	#22
#7 70"	#7 54"	D.W.L.S.	= Dowels	#8	#25
#8 80"	#8 62"	E.F.	= Each Face	#9	#29
#9 91"	#9 70"	E.S.	= Each Side	#10	#32
#10 102"	#10 79"	E.W.	= Each Way	#11	#36
#11 113"	#11 87"	FTG.	= Footing		
#14	#14	F.F.	= Far Face		
		HORIZ.	= Horizontal		
		I.F.	= Inside Face		
		INTERS.	= Intersection		
		L.W.	= Long Way		
		N.F.	= Near Face		
		O.F.	= Outside Face		
		S.W.	= Short Way		
		T&B	= Top & Bottom		
		T.O.W.	= Top of Wall		
		Trans.	= Transverse		
		VERT.	= Vertical		

**MARDELA MIDDLE & HIGH SCHOOL**  
 UNIT-D SPREAD FOOTING & PIER LAYOUT  
**MARDELA SPRINGS, MD 21837**

CUSTOMER: -  
 DESIGNER: -

DRAWN BY	DATE	JOB NO	SHEET NO.
RS/MET	06.08.22	-	R15

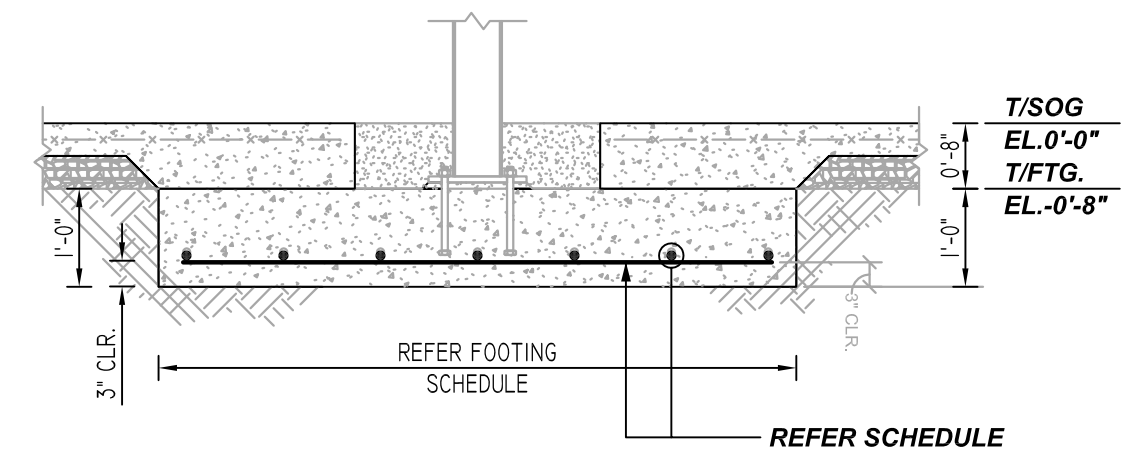
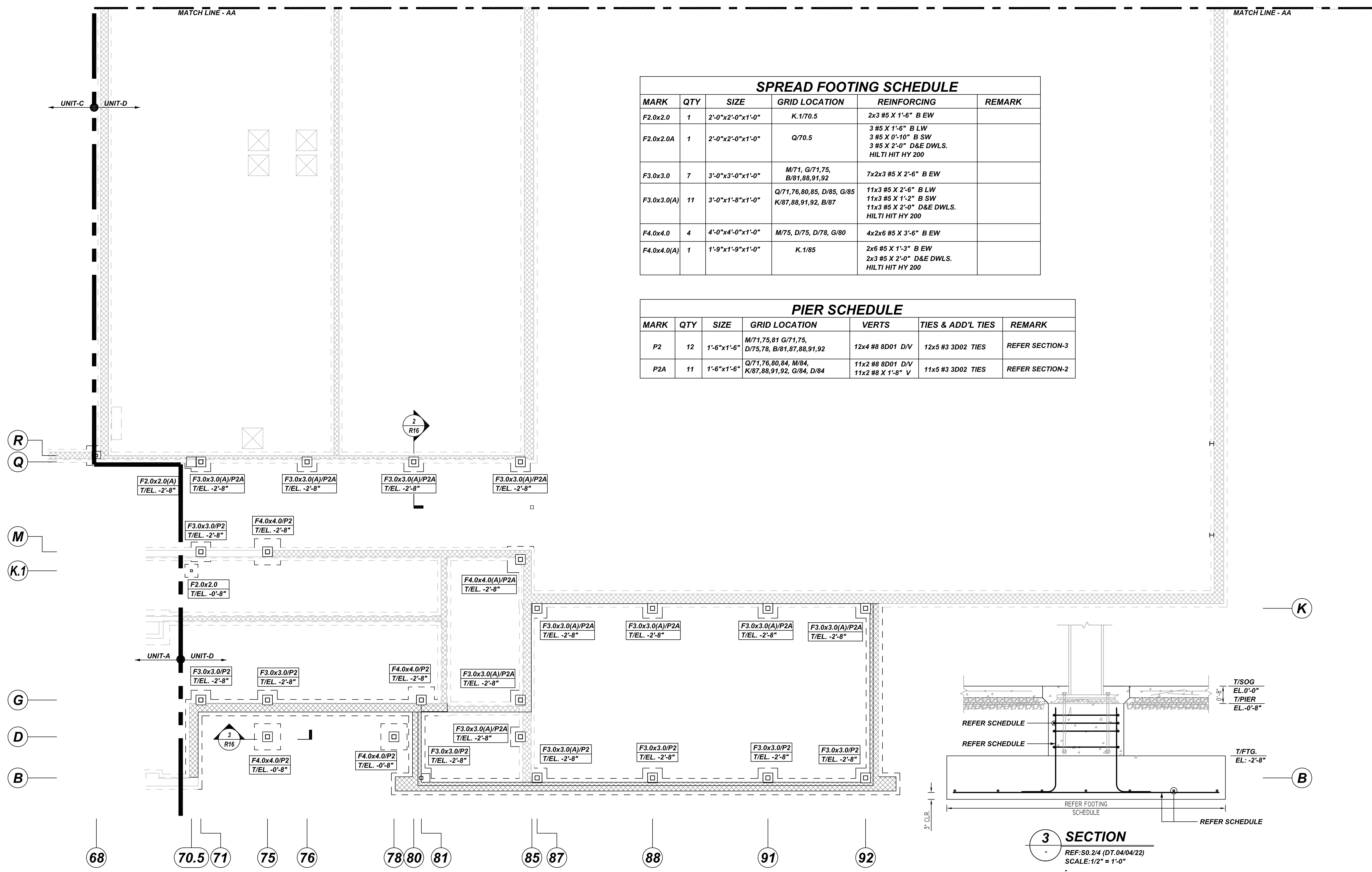
REV NO	DATE	APPROVAL	REV NO	DATE	SENT FOR
0	06.08.22				

**NOTICE**  
 SHORTAGES, IMPROPER FABRICATION OR CLAIMS FOR ANY OTHER REASON MUST BE REPORTED TO THIS COMPANY WITHIN 10 DAYS FROM ORIGINAL DELIVERY. THIS COMPANY ALSO RESERVES THE RIGHT TO FIELD INSPECT MATERIALS PRIOR TO REPLACEMENT OR RECONDITIONING OF MATERIALS AND WILL NOT BE LIABLE FOR CHARGES FROM WORK DONE IN THE FIELD WITHOUT PRIOR AUTHORIZATION FROM THIS COMPANY.

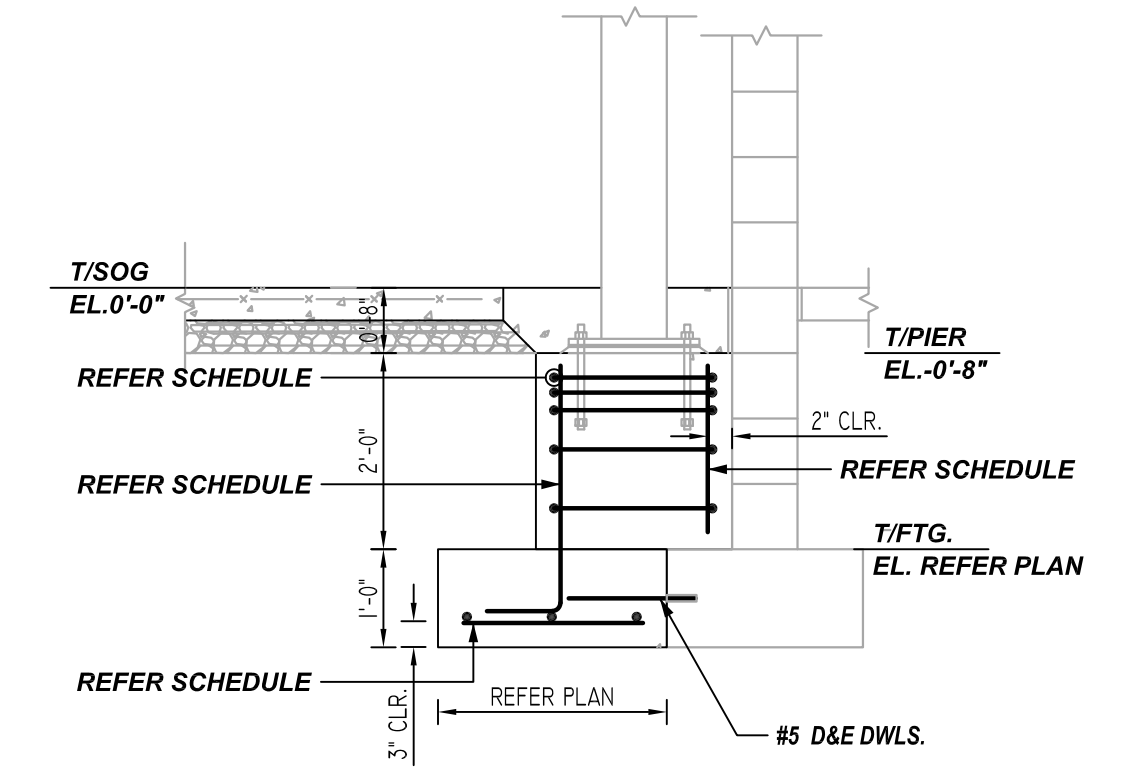
REINFORCING STEEL PLACING DRAWING ONLY. USE IN CONJUNCTION WITH CONTRACT DRAWINGS & SPECIFICATIONS. ELEVATIONS & DIMENSIONS SHOWN ON DRAWING ARE FOR DETAILING PURPOSES ONLY AND SHOULD NOT BE USED FOR CONSTRUCTION UNLESS VERIFIED BY ENGINEER OR CONTRACTOR.

SPREAD FOOTING SCHEDULE					
MARK	QTY	SIZE	GRID LOCATION	REINFORCING	REMARK
F2.0x2.0	1	2'-0"x2'-0"x1'-0"	K.1/70.5	2x3 #5 X 1'-6" B EW	
F2.0x2.0A	1	2'-0"x2'-0"x1'-0"	Q/70.5	3 #5 X 1'-6" B LW 3 #5 X 0'-10" B SW 3 #5 X 2'-0" D&E DWLS. HLTI HIT HY 200	
F3.0x3.0	7	3'-0"x3'-0"x1'-0"	M/71, G/71.75, B/81, 88, 91, 92	7x2x3 #5 X 2'-6" B EW	
F3.0x3.0(A)	11	3'-0"x1'-8"x1'-0"	Q/71, 76, 80, 84, M/84, K/87, 88, 91, 92, B/87	11x3 #5 X 2'-6" B LW 11x3 #5 X 1'-2" B SW 11x3 #5 X 2'-0" D&E DWLS. HLTI HIT HY 200	
F4.0x4.0	4	4'-0"x4'-0"x1'-0"	M/75, D/75, D/78, G/80	4x2x6 #5 X 3'-6" B EW	
F4.0x4.0(A)	1	1'-9"x1'-9"x1'-0"	K.1/85	2x6 #5 X 1'-3" B EW 2x3 #5 X 2'-0" D&E DWLS. HLTI HIT HY 200	

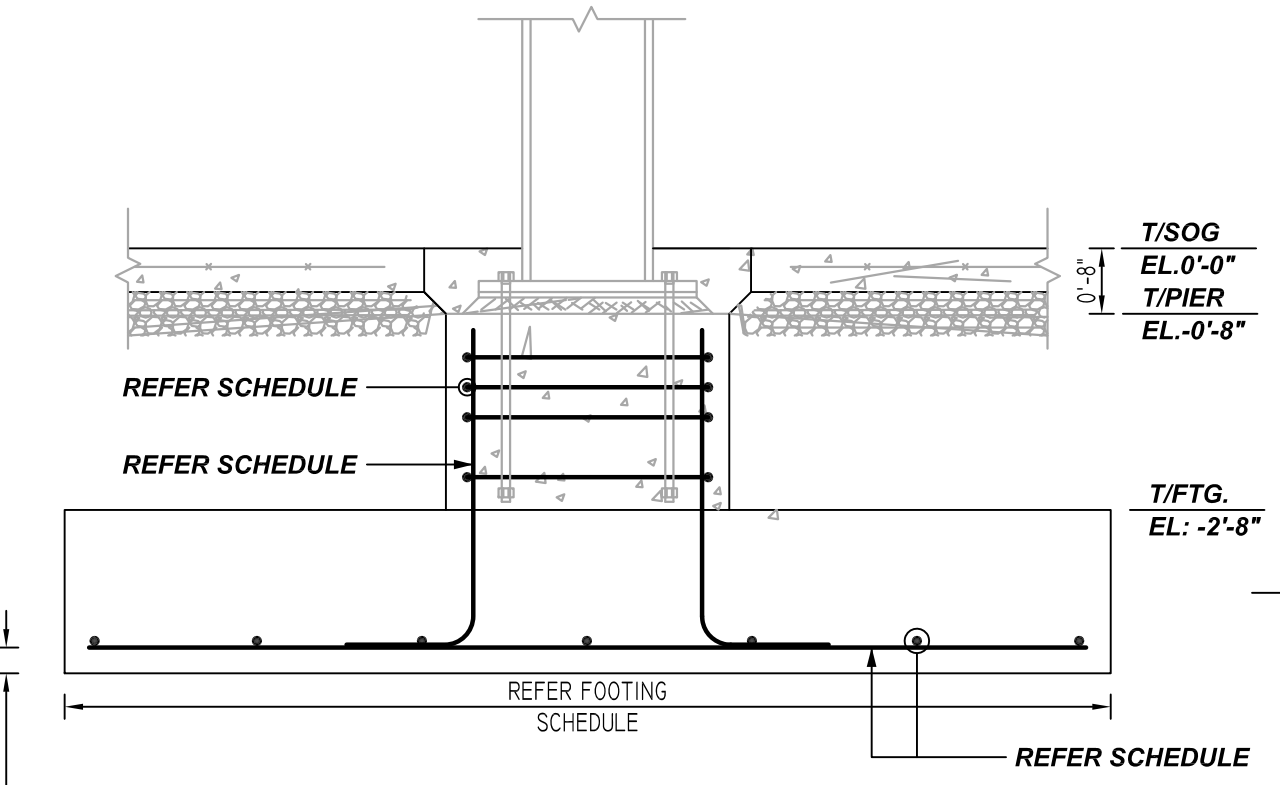
PIER SCHEDULE						
MARK	QTY	SIZE	GRID LOCATION	VERTS	TIES & ADD'L TIES	REMARK
P2	12	1'-6"x1'-6"	M/71, 75, 81 G/71.75, D/75, 78, B/81, 87, 88, 91, 92	12x4 #8 8D01 D/V	12x5 #3 3D02 TIES	REFER SECTION-3
P2A	11	1'-6"x1'-6"	Q/71, 76, 80, 84, M/84, K/87, 88, 91, 92, G/84, D/84	11x2 #8 8D01 D/V 11x2 #8 X 1'-8" V	11x5 #3 3D02 TIES	REFER SECTION-2



**1 SECTION**  
 REF: S0.1/3 (DT.04/04/22)  
 SCALE: 1/2" = 1'-0"



**2 SECTION**  
 REF: S0.2/2 (DT.04/04/22)  
 SCALE: 1/2" = 1'-0"



**3 SECTION**  
 REF: S0.2/4 (DT.04/04/22)  
 SCALE: 1/2" = 1'-0"

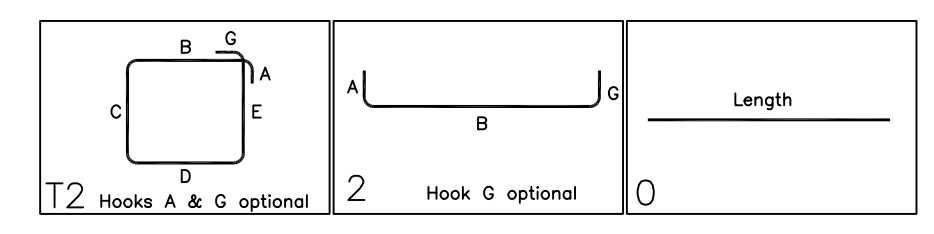
**ALL BARS IN THIS DRAWING  
 ASTM A615 GRADE 60  
 BLACK UNCOATED**

TYPICAL REINFORCING BAR CLEARANCE TABLE	
LOCATION	MIN. COVER
FOOTING BOTTOM	3 CLR
FOOTING SIDE	3" CLR

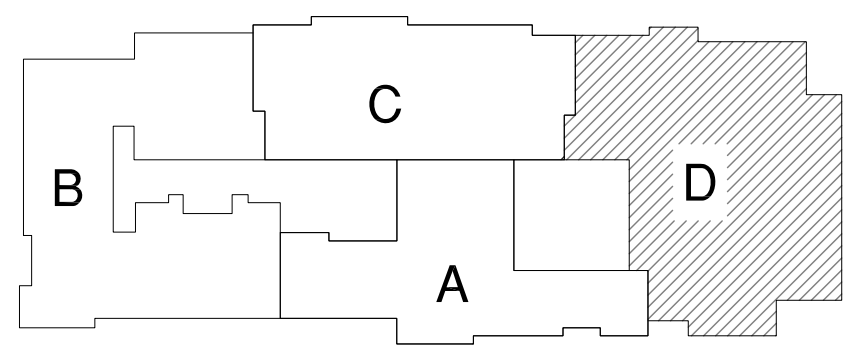
**UNIT-D SPREAD FOOTING & PIER LAYOUT**

REF: S1.4 (DT.04/18/22)  
 SCALE: 1/8" = 1'-0"

BAR LIST												
Bar Mark	Qty	Size	Total Length	Type	X'	Y'	Z'	Y'	Y'	Y'	Y'	Y'
3002	115	#3	5'-4"	T2	0'-4"	1'-2"	1'-2"	1'-2"	1'-2"	0'-4"		
8001	70	#8	4'-7"	2	1'-4"	3'-3"						



BAR LIST												
Bar Mark	Qty	Size	Total Length	Type	X'	Y'	Z'	Y'	Y'	Y'	Y'	Y'
0501	43	#3	2'-0"		2'-0"							



**KEY PLAN**  
 REF: S1.1 (DT.04/18/22)  
 SCALE: N.T.S.

**LAP SCHEDULE**

3000 PSI (CLASS-B) CASE - 1  
 Per ACI :318 (12.2.2)

BAR#	LENGTHS	
	TOP	OTHERS
#3	2'-4"	1'-10"
#4	3'-1"	2'-5"
#5	3'-11"	3'-0"
#6	4'-8"	3'-7"
#7	6'-9"	5'-3"
#8	7'-9"	6'-0"
#9	8'-9"	6'-9"
#10	9'-10"	7'-7"
#11	10'-11"	8'-5"

ALL TOP BARS ARE DEFINED AS HORIZ BARS WITH MORE THAN 12" OF CONCRETE BELOW BARS.

**REBAR GRADE 60 ASTM A-615**

SPLICES USED		ABBREVIATIONS		BAR MARK SIZE EQUIVALENT	
CLASS B 4,000 psi UNO				Imperial	Soft Metric
TOP BARS	OTHER BARS	ADD.	= Additional	#3	#10
#3 24"	#3 19"	B.O.W.	= Bottom of wall	#4	#13
#4 32"	#4 25"	C.B.	= Corner Bars	#5	#16
#5 40"	#5 31"	DIAG.	= Diagonal	#6	#19
#6 48"	#6 37"	D.O.	= Door Opening	#7	#22
#7 70"	#7 54"	D.WLS.	= Dowels	#8	#25
#8 80"	#8 62"	E.F.	= Each Face	#9	#29
#9 91"	#9 70"	E.S.	= Each Side	#10	#32
#10 102"	#10 79"	E.W.	= Each Way	#11	#36
#11 113"	#11 87"	FTG.	= Footing		
#14		F.F.	= Far Face		
		HORIZ.	= Horizontal		
		I.F.	= Inside Face		
		INTERS=	= Intersection		
		L.W.	= long Way		
		N.F.	= Near Face		
		O.F.	= Outside Face		
		S.W.	= Short Way		
		T&B	= Top & Bottom		
		T.O.W.	= Top of Wall		
		Trans.	= Transverse		
		VERT.	= Vertical		

**MARDELA MIDDLE & HIGH SCHOOL**  
 UNIT-D SPREAD FOOTING & PIER LAYOUT  
**MARDELA SPRINGS, MD 21837**

CUSTOMER: -  
 DESIGNER: -

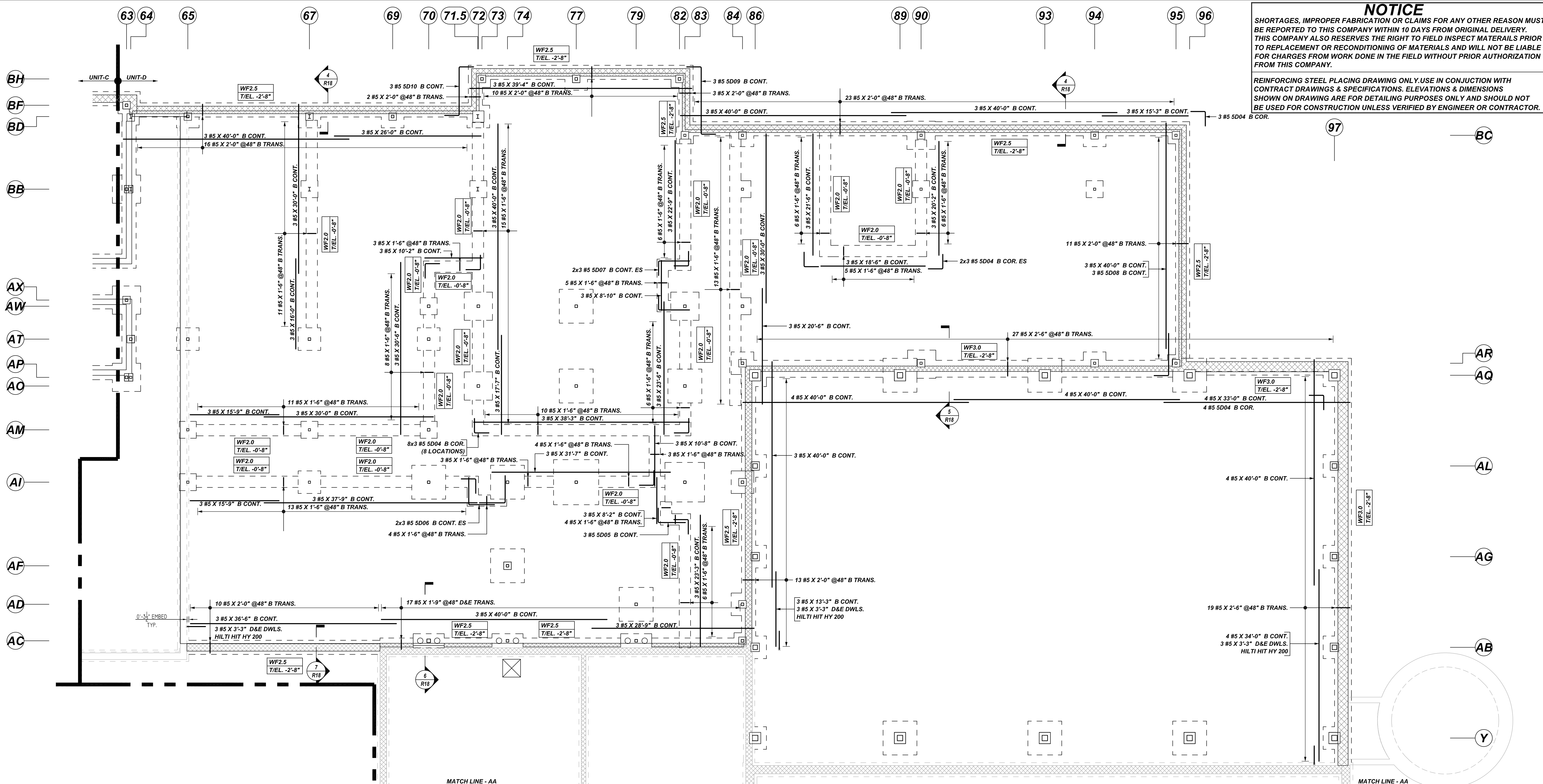
REV NO	DATE	APPROVAL	SENT FOR	REV NO	DATE	SENT FOR
0	06.08.22					

DRAWN BY	DATE	JOB NO	SHEET NO.
RS/MET	06.08.22	-	<b>R16</b>

**NOTICE**

SHORTAGES, IMPROPER FABRICATION OR CLAIMS FOR ANY OTHER REASON MUST BE REPORTED TO THIS COMPANY WITHIN 10 DAYS FROM ORIGINAL DELIVERY. THIS COMPANY ALSO RESERVES THE RIGHT TO FIELD INSPECT MATERIALS PRIOR TO REPLACEMENT OR RECONDITIONING OF MATERIALS AND WILL NOT BE LIABLE FOR CHARGES FROM WORK DONE IN THE FIELD WITHOUT PRIOR AUTHORIZATION FROM THIS COMPANY.

REINFORCING STEEL PLACING DRAWING ONLY. USE IN CONJUNCTION WITH CONTRACT DRAWINGS & SPECIFICATIONS. ELEVATIONS & DIMENSIONS SHOWN ON DRAWING ARE FOR DETAILING PURPOSES ONLY AND SHOULD NOT BE USED FOR CONSTRUCTION UNLESS VERIFIED BY ENGINEER OR CONTRACTOR.



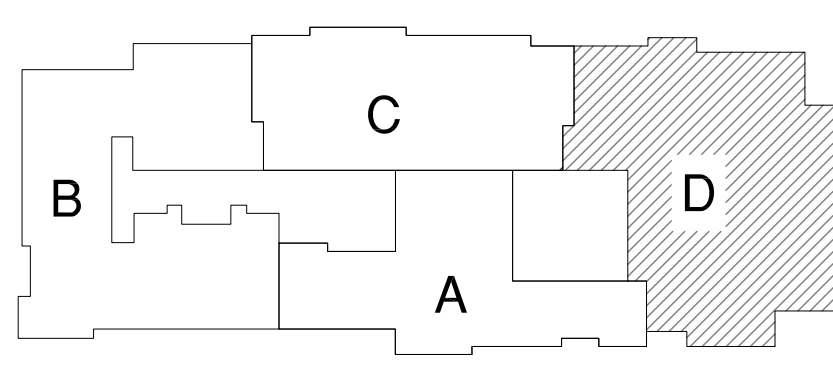
**UNIT -D WALL FOOTING REINFORCEMENT DETAILS**

REF: S1.4 (DT.04/18/22)  
SCALE: 1/8" = 1'-0"

**ALL BARS IN THIS DRAWING  
ASTM A615 GRADE 60  
BLACK UNCOATED**

TYPICAL REINFORCING BAR CLEARANCE TABLE

LOCATION	MIN. COVER
FOOTING BOTTOM	3 CLR
FOOTING SIDE	3 CLR



**KEY PLAN**

REF: S1.1 (DT.04/18/22)  
SCALE: N.T.S

**REBAR GRADE 60 ASTM A-615**

**SPLICES USED**

CLASS B 4,000 psi UNO

TOP BARS	OTHER BARS
#3 24"	#3 19"
#4 32"	#4 25"
#5 40"	#5 31"
#6 48"	#6 37"
#7 70"	#7 54"
#8 80"	#8 62"
#9 91"	#9 70"
#10 102"	#10 79"
#11 113"	#11 87"
#14	#14

**ABBREVIATIONS**

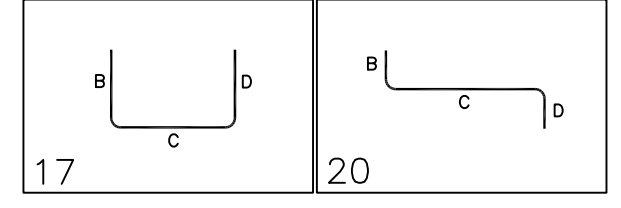
- ADD. = Additional
- B.O.W. = Bottom of wall
- C.B. = Corner Bars
- DIAG. = Diagonal
- D.O. = Door Opening
- D.W.L.S. = Dowels
- E.F. = Each Face
- E.S. = Each Side
- E.W. = Each Way
- FTG. = Footing
- F.F. = Far Face
- HORIZ. = Horizontal
- I.F. = Inside Face
- INTERS. = Intersection
- L.W. = long Way
- N.F. = Near Face
- O.F. = Outside Face
- S.W. = Short Way
- T&B = Top & Bottom
- T.O.W. = Top of Wall
- Trans. = Transverse
- VERT. = Vertical

**BAR MARK SIZE EQUIVALENT**

Imperial	Soft Metric
#3	#10
#4	#13
#5	#16
#6	#19
#7	#22
#8	#25
#9	#29
#10	#32
#11	#36

Release Number: R17

Bar Mark	Qty	Size	Total Length	Type	X	Y	Z	BRG LIST
5004	3	#5	5'-7"	17			2'-7"	2'-7"
5005	3	#5	7'-5"	17			2'-7"	4'-10"
5006	6	#5	9'-5"	17			4'-7"	4'-10"
5007	6	#5	8'-1"	17			2'-7"	5'-5"
5008	3	#5	10'-1"	17			2'-7"	7'-5"
5009	3	#5	17'-2"	20			2'-7"	12'-0"
5010	3	#5	13'-10"	20			2'-7"	8'-5"



Release Number: S17 HILTI HIT HY 200

Bar Mark	Qty	Size	Total Length	Type	X	Y	Z	BRG LIST
0521	9	#5	3'-3"				3'-3"	

**MARDELA MIDDLE & HIGH SCHOOL**  
UNIT -D WALL FOOTING REINFORCEMENT DETAILS  
**MARDELA SPRINGS, MD 21837**

CUSTOMER: -  
DESIGNER: -

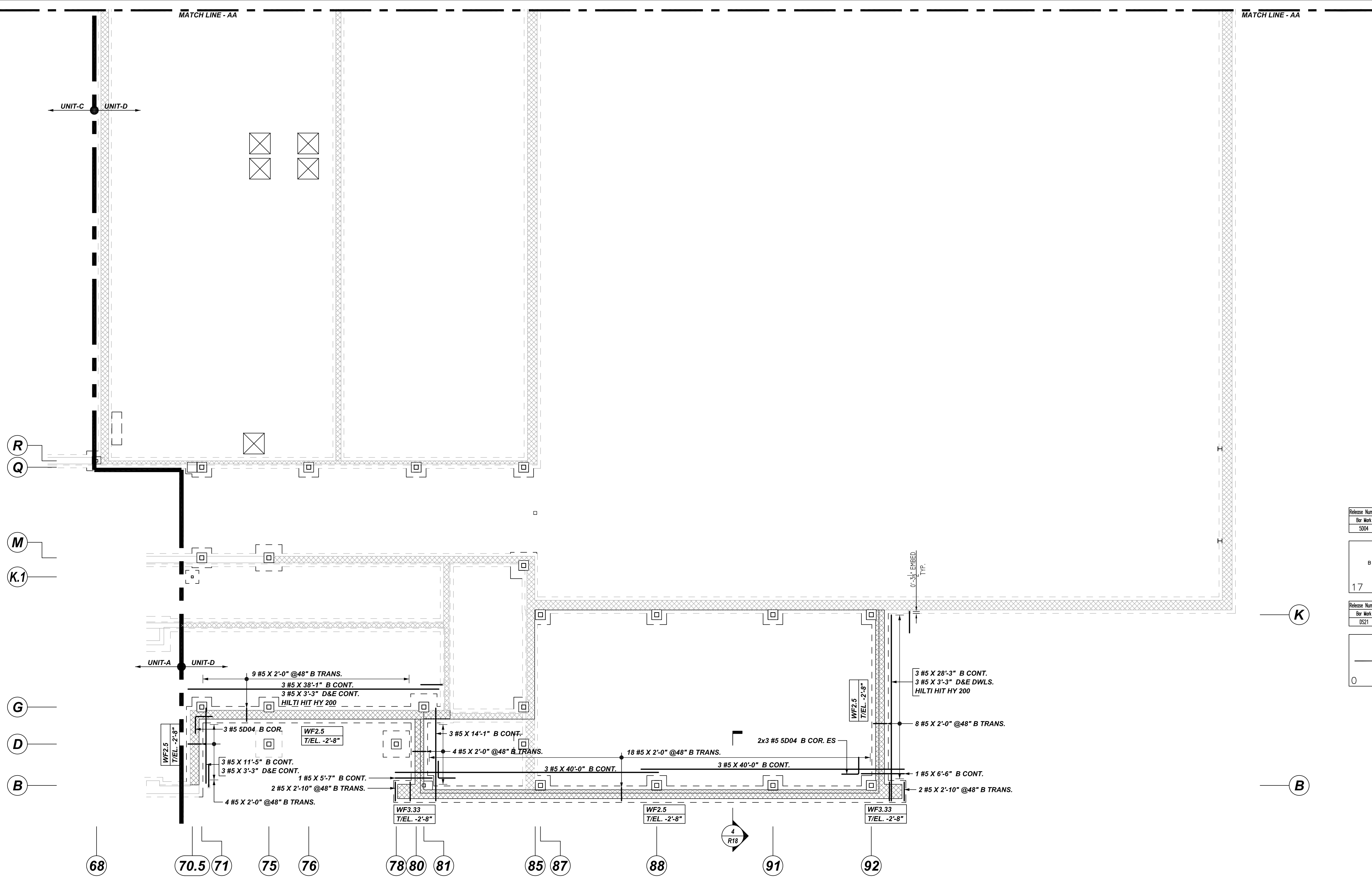
DRAWN BY	DATE	JOB NO	SHEET NO.
RS/MET	06.08.22	-	<b>R17</b>

REV NO	DATE	APPROVAL	REV NO	DATE	SENT FOR
0	06.08.22				

**NOTICE**

SHORTAGES, IMPROPER FABRICATION OR CLAIMS FOR ANY OTHER REASON MUST BE REPORTED TO THIS COMPANY WITHIN 10 DAYS FROM ORIGINAL DELIVERY. THIS COMPANY ALSO RESERVES THE RIGHT TO FIELD INSPECT MATERIALS PRIOR TO REPLACEMENT OR RECONDITIONING OF MATERIALS AND WILL NOT BE LIABLE FOR CHARGES FROM WORK DONE IN THE FIELD WITHOUT PRIOR AUTHORIZATION FROM THIS COMPANY.

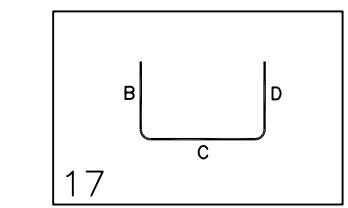
REINFORCING STEEL PLACING DRAWING ONLY. USE IN CONJUNCTION WITH CONTRACT DRAWINGS & SPECIFICATIONS. ELEVATIONS & DIMENSIONS SHOWN ON DRAWING ARE FOR DETAILING PURPOSES ONLY AND SHOULD NOT BE USED FOR CONSTRUCTION UNLESS VERIFIED BY ENGINEER OR CONTRACTOR.



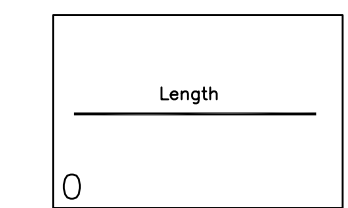
**UNIT-D WALL FOOTING REINFORCEMENT DETAILS**

REF: S1.4 (DT. 04/18/22)  
SCALE: 1/8" = 1'-0"

Release Number: R18										BAR LIST										
Bar Mark	Qty	Size	Total Length	Type	X	Y	Z	V	W	X	Y	Z	V	W	X	Y	Z	V	W	
5004	8	#5	5'-2"	17																

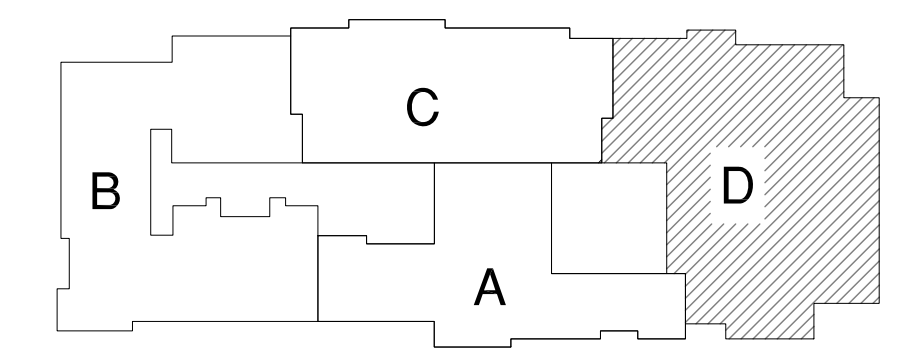


Release Number: R18 HILTI HY 200										BAR LIST										
Bar Mark	Qty	Size	Total Length	Type	X	Y	Z	V	W	X	Y	Z	V	W	X	Y	Z	V	W	
0221	8	#5	3'-3"	3																



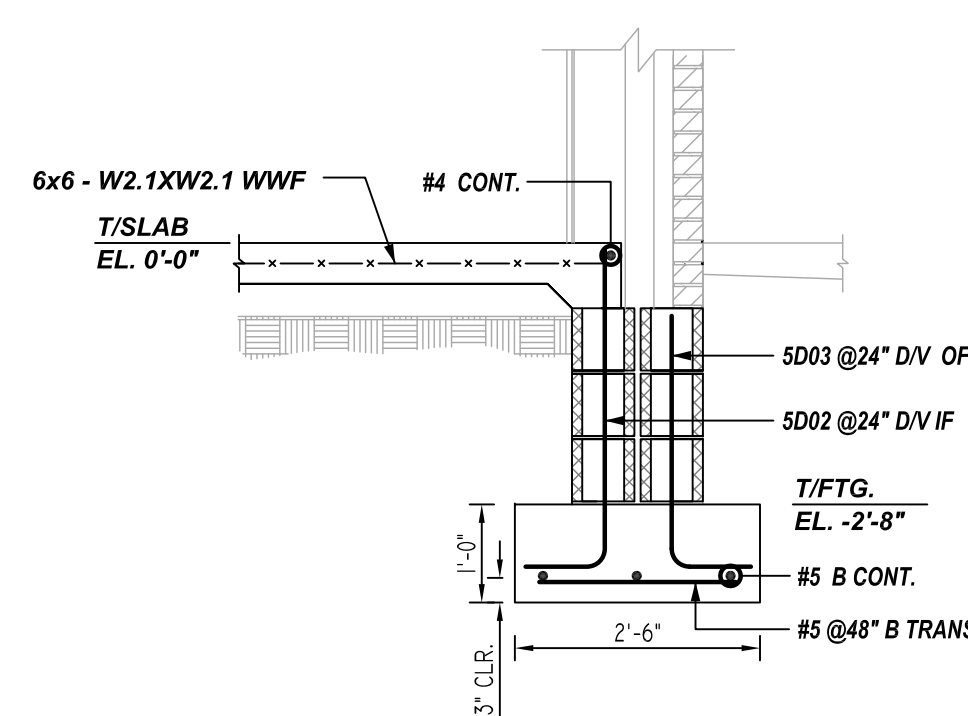
**ALL BARS IN THIS DRAWING  
ASTM A615 GRADE 60  
BLACK UNCOATED**

TYPICAL REINFORCING BAR CLEARANCE TABLE	
LOCATION	MIN. COVER
FOOTING BOTTOM	3 CLR
FOOTING SIDE	3 CLR

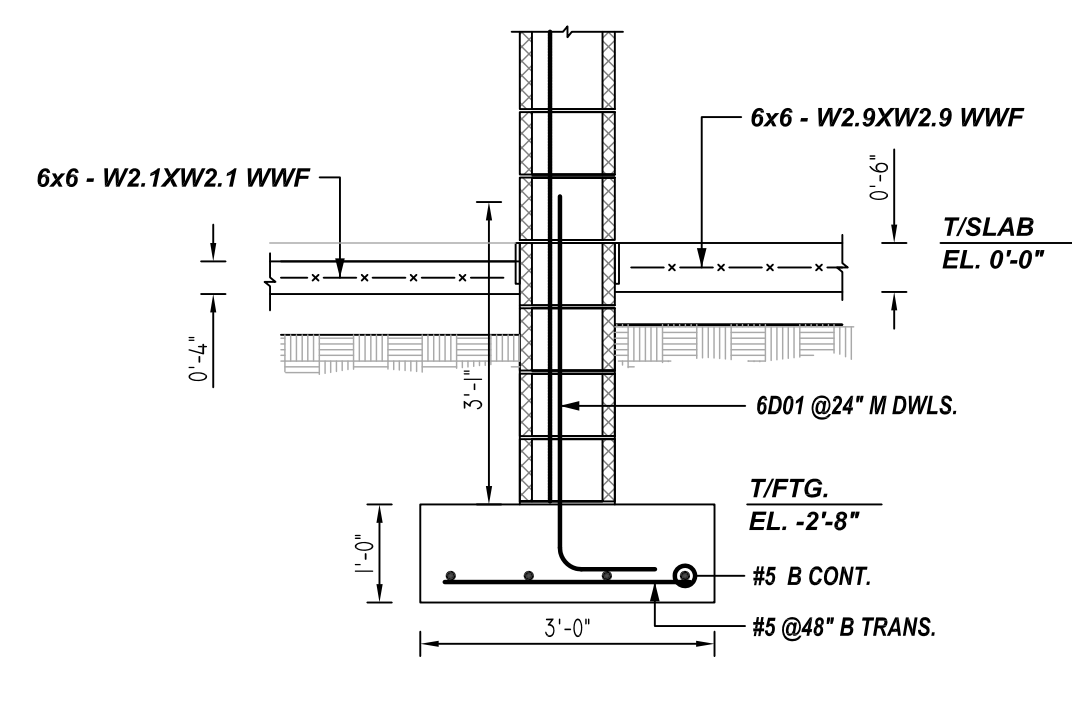


**KEY PLAN**

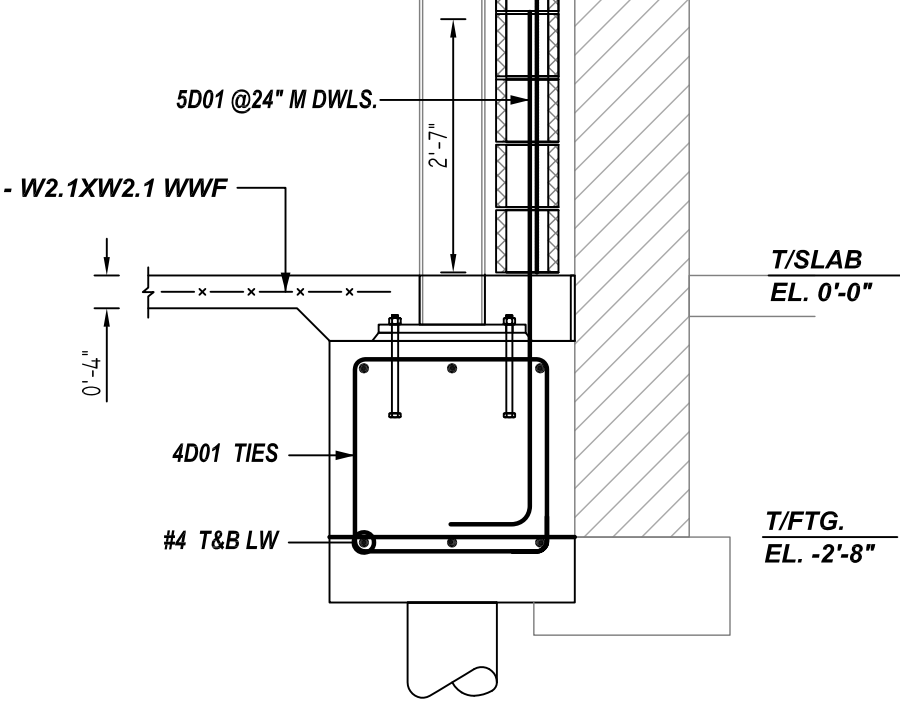
REF: S1.1 (DT. 04/18/22)  
SCALE: N.T.S.



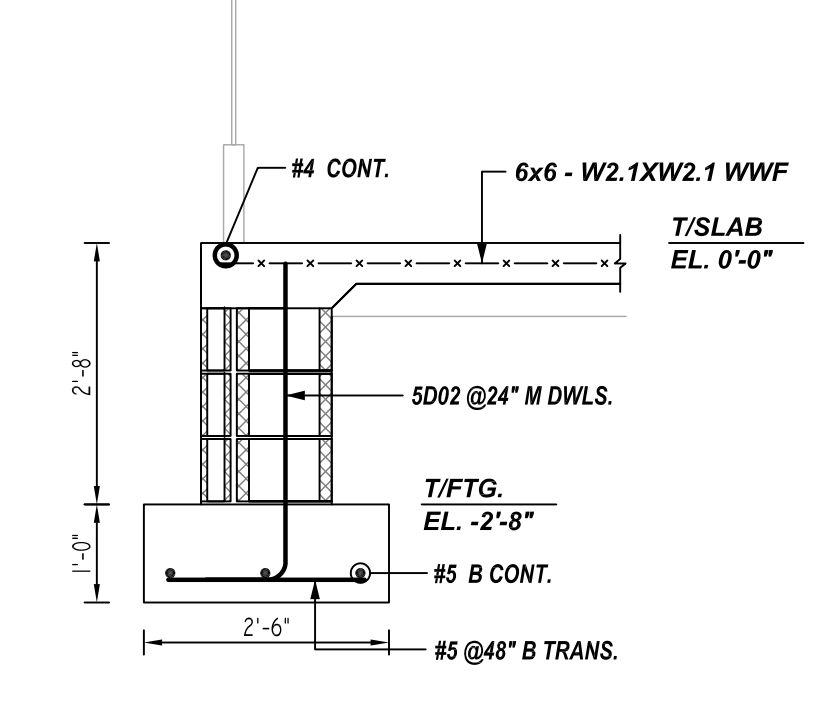
**4 SECTION**  
REF: 3/S3.8 (DT. 04/18/22)  
SCALE: 1/2" = 1'-0"



**5 SECTION**  
REF: 1/S3.8 (DT. 04/18/22)  
SCALE: 1/2" = 1'-0"



**6 SECTION**  
REF: 1/S3.9 (DT. 04/04/22)  
SCALE: 1/2" = 1'-0"



**7 SECTION**  
REF: 9/S3.2 (DT. 04/04/22)  
SCALE: 1/2" = 1'-0"

**REBAR GRADE 60 ASTM A-615**

**SPLICES USED**

CLASS B 4,000 psi UNO	
TOP BARS	OTHER BARS
#3 24"	#3 19"
#4 32"	#4 25"
#5 40"	#5 31"
#6 48"	#6 37"
#7 70"	#7 54"
#8 80"	#8 62"
#9 91"	#9 70"
#10 102"	#10 79"
#11 113"	#11 87"
#14	#14

**ABBREVIATIONS**

- ADD. = Additional
- B.O.W. = Bottom of wall
- C.B. = Corner Bars
- DIAG. = Diagonal
- D.O. = Door Opening
- DWLS. = Dowels
- E.F. = Each Face
- E.S. = Each Side
- E.W. = Each Way
- FTG. = Footing
- F.F. = Far Face
- HORIZ. = Horizontal
- I.F. = Inside Face
- INTERS. = Intersection
- L.W. = Long Way
- N.F. = Near Face
- O.F. = Outside Face
- S.W. = Short Way
- T&B = Top & Bottom
- T.O.W. = Top of Wall
- Trans. = Transverse
- VERT. = Vertical

**BAR MARK SIZE EQUIVALENT**

Imperial	Soft Metric
#3	#10
#4	#13
#5	#16
#6	#19
#7	#22
#8	#25
#9	#29
#10	#32
#11	#36

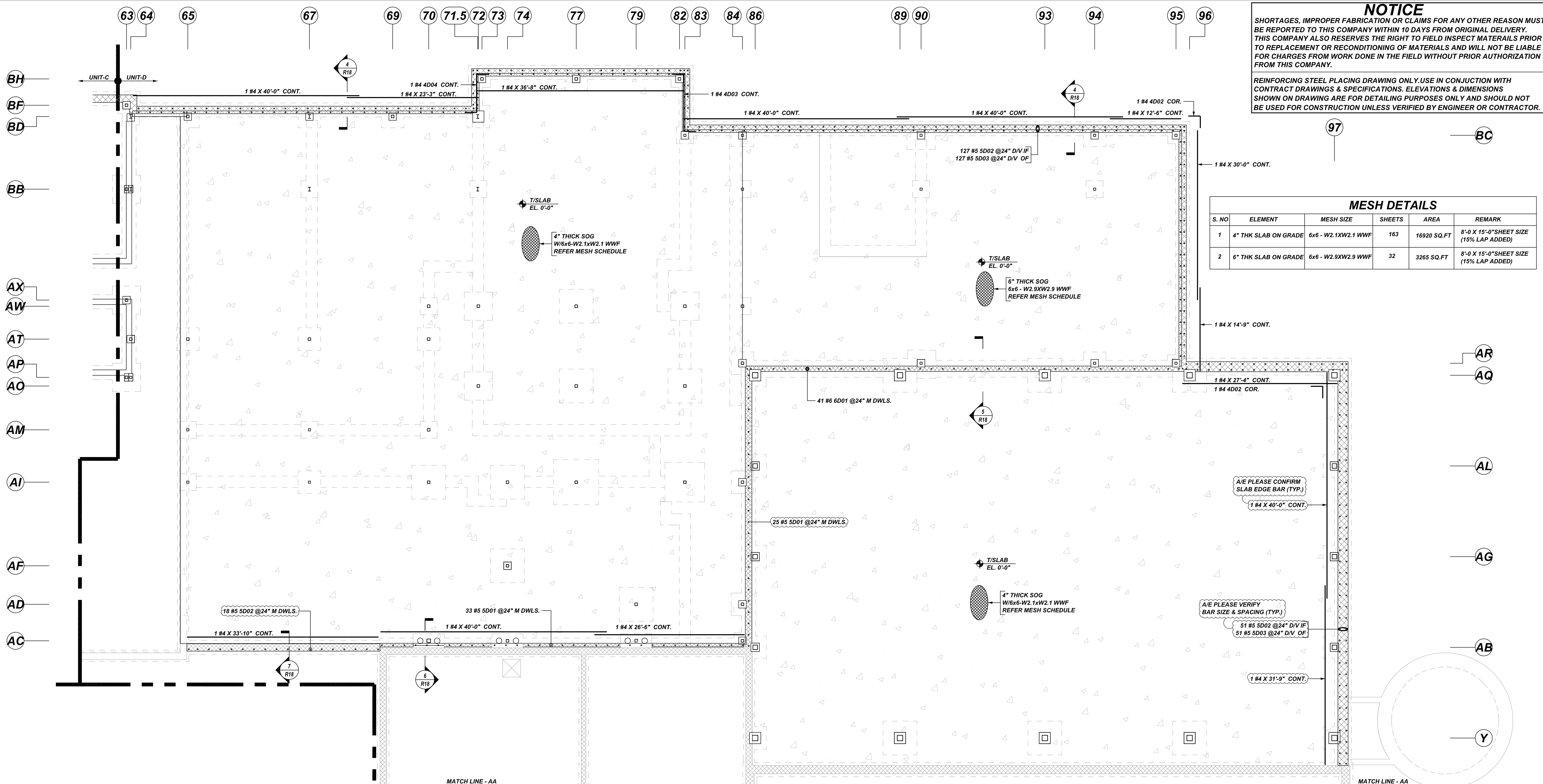
REV NO	DATE	APPROVAL	REV NO	DATE	SENT FOR
0	06.08.22				

**MARDELA MIDDLE & HIGH SCHOOL**  
UNIT-D CMU DOWEL & SLAB ON GRADE REINFORCEMENT DETAILS  
**MARDELA SPRINGS, MD 21837**

CUSTOMER: -			
DESIGNER: -			
DRAWN BY	DATE	JOB NO	SHEET NO.
RS/MET	06.08.22	-	<b>R18</b>

**NOTICE**  
 SHORTAGES, IMPROPER FABRICATION OR CLAIMS FOR ANY OTHER REASON MUST BE REPORTED TO THIS COMPANY WITHIN 10 DAYS FROM ORIGINAL DELIVERY. THIS COMPANY ALSO RESERVES THE RIGHT TO FIELD INSPECT MATERIALS PRIOR TO REPLACEMENT OR RECONDITIONING OF MATERIALS AND WILL NOT BE LIABLE FOR CHARGES FROM WORK DONE IN THE FIELD WITHOUT PRIOR AUTHORIZATION FROM THIS COMPANY.

REINFORCING STEEL PLACING DRAWING ONLY. USE IN CONJUNCTION WITH CONTRACT DRAWINGS & SPECIFICATIONS. ELEVATIONS & DIMENSIONS SHOWN ON DRAWING ARE FOR DETAILING PURPOSES ONLY AND SHOULD NOT BE USED FOR CONSTRUCTION UNLESS VERIFIED BY ENGINEER OR CONTRACTOR.



**MESH DETAILS**

S. NO	ELEMENT	MESH SIZE	SHEETS	AREA	REMARK
1	4" THK SLAB ON GRADE	6x6 - W2.1XW2.1 WWF	163	16920 SQ.FT	8'-0" X 15'-0" SHEET SIZE (15% LAP ADDED)
2	6" THK SLAB ON GRADE	6x6 - W2.9XW2.9 WWF	32	3265 SQ.FT	8'-0" X 15'-0" SHEET SIZE (15% LAP ADDED)

**UNIT -D CMU DOWEL AND SLAB ON GRADE REINFORCEMENT DETAILS**

REF: S1.4 (DT.04/18/22)  
 SCALE: 1/8" = 1'-0"

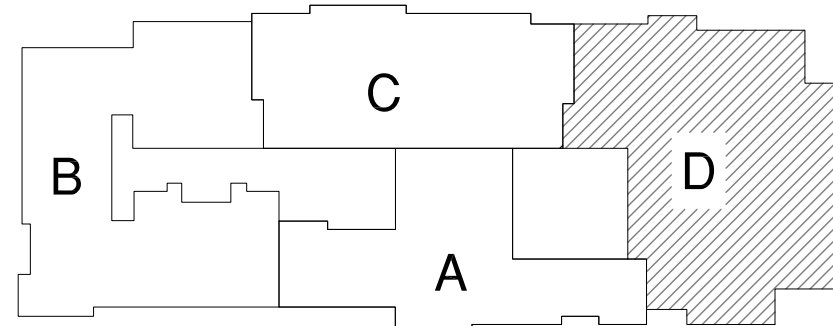
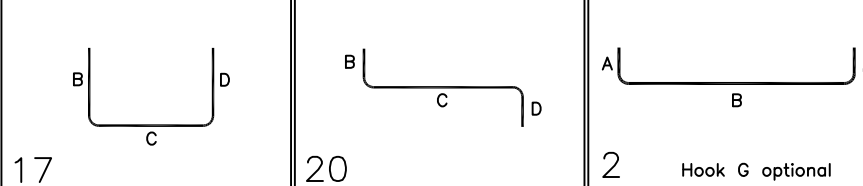
**ALL BARS IN THIS DRAWING  
 ASTM A615 GRADE 60  
 BLACK UNCOATED**

**TYPICAL REINFORCING BAR CLEARANCE TABLE**

LOCATION	MIN. COVER
SLAB TOP	2" CLR
SLAB SIDE	2" CLR

Release Number: R19

Bar Mark	Qty	Size	Total Length	Type	X'	Y'	X"	Y"	X"	Y"	X"	Y"
4002	2	#4	4'-2"	17		2'-1"	2'-1"					
4003	1	#4	14'-4"	20		2'-1"	10'-2"	2'-1"				
4004	1	#4	11'-0"	20		2'-1"	6'-10"	2'-1"				
5001	38	#5	6'-11"	2	0'-10"	5'-3"						
5002	196	#5	4'-11"	2	0'-10"	3'-3"						
5003	176	#5	1'-5"	2	0'-10"	2'-3"						
6001	41	#6	4'-10"	2	1'-5"	3'-10"						



**KEY PLAN**  
 REF: S1.1 (DT.04/18/22)  
 SCALE: N.T.S.

**REBAR GRADE 60 ASTM A-615**

**SPLICES USED**

**CLASS B 4,000 psi UNO**

TOP BARS	OTHER BARS
#3 24"	#3 19"
#4 32"	#4 25"
#5 40"	#5 31"
#6 48"	#6 37"
#7 70"	#7 54"
#8 80"	#8 62"
#9 91"	#9 70"
#10 102"	#10 79"
#11 113"	#11 87"
#14	#14

**ABBREVIATIONS**  
 ADD. = Additional  
 B.O.W. = Bottom of wall  
 C.B. = Core Bars  
 DIAG. = Diagonal  
 D.O. = Door Opening  
 DWLS. = Dowels  
 E.F. = Each Face  
 E.S. = Each Side  
 E.W. = Each Way  
 F.F. = Footing  
 F.F. = Far Face  
 HORIZ. = Horizontal  
 I.F. = Inside Face  
 INTERS. = Intersection  
 L.W. = long Way  
 N.F. = Near Face  
 O.F. = Outside Face  
 S.W. = Short Way  
 T&B = Top & Bottom  
 T.O.W. = Top of Wall  
 Trans. = Transverse  
 VERT. = Vertical

**BAR MARK SIZE EQUIVALENT**

Imperial	Soft Metric
#3	#10
#4	#13
#5	#16
#6	#19
#7	#22
#8	#25
#9	#29
#10	#32
#11	#36

REV NO	DATE	SENT FOR	REV NO	DATE	SENT FOR
0	06.08.22	APPROVAL			

**MARDELA MIDDLE & HIGH SCHOOL**  
 UNIT -D CMU DOWEL & SLAB ON GRADE REINFORCEMENT DETAILS  
**MARDELA SPRINGS, MD 21837**

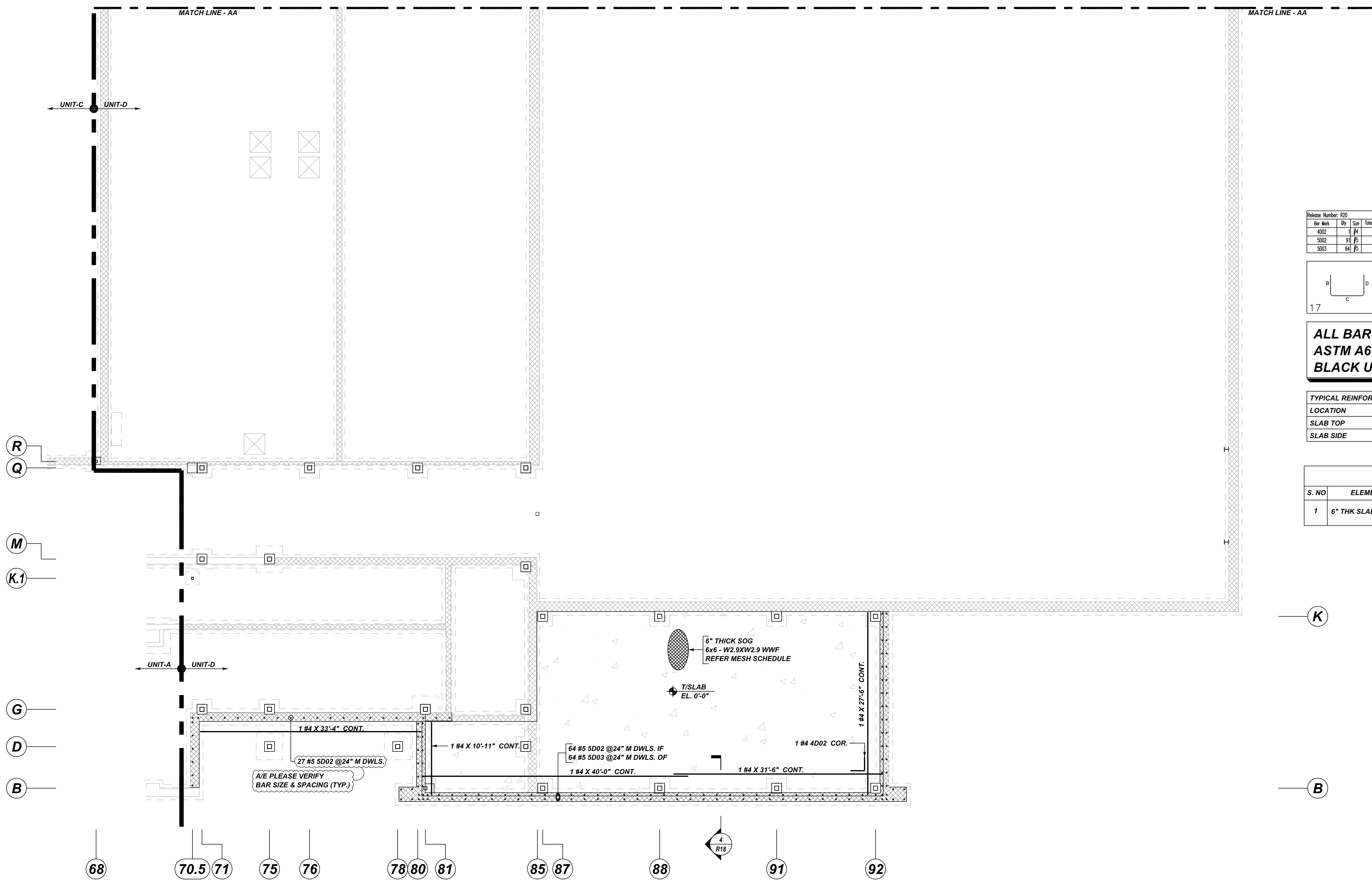
CUSTOMER: -  
 DESIGNER: -

DRAWN BY	DATE	JOB NO	SHEET NO.
RS/MET	06.08.22	-	<b>R19</b>

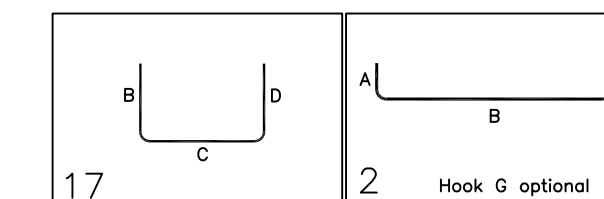
**NOTICE**

SHORTAGES, IMPROPER FABRICATION OR CLAIMS FOR ANY OTHER REASON MUST BE REPORTED TO THIS COMPANY WITHIN 10 DAYS FROM ORIGINAL DELIVERY. THIS COMPANY ALSO RESERVES THE RIGHT TO FIELD INSPECT MATERIALS PRIOR TO REPLACEMENT OR RECONDITIONING OF MATERIALS AND WILL NOT BE LIABLE FOR CHARGES FROM WORK DONE IN THE FIELD WITHOUT PRIOR AUTHORIZATION FROM THIS COMPANY.

REINFORCING STEEL PLACING DRAWING ONLY. USE IN CONJUNCTION WITH CONTRACT DRAWINGS & SPECIFICATIONS. ELEVATIONS & DIMENSIONS SHOWN ON DRAWING ARE FOR DETAILING PURPOSES ONLY AND SHOULD NOT BE USED FOR CONSTRUCTION UNLESS VERIFIED BY ENGINEER OR CONTRACTOR.



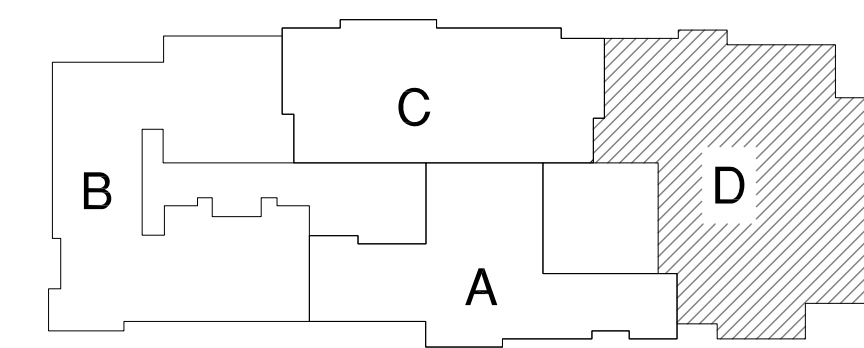
Bar Mark	Qty	Size	Total Length	Type	X	Y	Z	BAR LIST
4002	17	#4	4'-2"	17				
5002	91	#5	4'-1"	2	0'-10"	3'-1"		
5003	64	#5	3'-5"	2	0'-10"	2'-7"		



**ALL BARS IN THIS DRAWING  
ASTM A615 GRADE 60  
BLACK UNCOATED**

TYPICAL REINFORCING BAR CLEARANCE TABLE	
LOCATION	MIN. COVER
SLAB TOP	2" CLR
SLAB SIDE	2" CLR

MESH DETAILS					
S. NO	ELEMENT	MESH SIZE	SHEETS	AREA	REMARK
1	6" THK SLAB ON GRADE	6x6 - W2.9XW2.9 WWF	16	1655 SQ. FT	8'-0" X 15'-0" SHEET SIZE (15% LAP ADDED)



**KEY PLAN**  
REF: S1.1 (DT. 04/18/22)  
SCALE: N.T.S.

**UNIT -D CMU DOWEL AND SLAB ON GRADE REINFORCEMENT DETAILS**

REF: S1.4 (DT. 04/18/22)  
SCALE: 1/8" = 1'-0"

**REBAR GRADE 60 ASTM A-615**

SPLICES USED		ABBREVIATIONS		BAR MARK SIZE EQUIVALENT	
CLASS B 4,000 psi UNO				Imperial	Soft Metric
TOP BARS	OTHER BARS	ADD.	Additional	#3	#10
#3 24"	#3 19"	B.O.W.	Bottom of wall	#4	#13
#4 32"	#4 25"	C.B.	Corner Bars	#5	#16
#5 40"	#5 31"	DIAG.	Diagonal	#6	#19
#6 48"	#6 37"	D.O.	Door Opening	#7	#22
#7 70"	#7 54"	D.W.L.S.	Dowels	#8	#25
#8 80"	#8 62"	E.F.	Each Face	#9	#29
#9 91"	#9 70"	E.S.	Each Side	#10	#32
#10 102"	#10 79"	E.W.	Each Way	#11	#36
#11 113"	#11 87"	FTG.	Footing		
#14	#14	F.F.	Far Face		
		HORIZ.	Horizontal		
		I.F.	Inside Face		
		INTERS.	Intersection		
		L.W.	Long Way		
		N.F.	Near Face		
		O.F.	Outside Face		
		S.W.	Short Way		
		T&B	Top & Bottom		
		T.O.W.	Top of Wall		
		Trans.	Transverse		
		VERT.	Vertical		

**MARDELA MIDDLE & HIGH SCHOOL**  
UNIT -D CMU DOWEL & SLAB ON GRADE REINFORCEMENT DETAILS  
**MARDELA SPRINGS, MD 21837**

CUSTOMER: -  
DESIGNER: -

REV NO	DATE	SENT FOR	REV NO	DATE	SENT FOR
0	06.08.22	APPROVAL			

DRAWN BY	DATE	JOB NO	SHEET NO.
RS/MET	06.08.22	-	R20