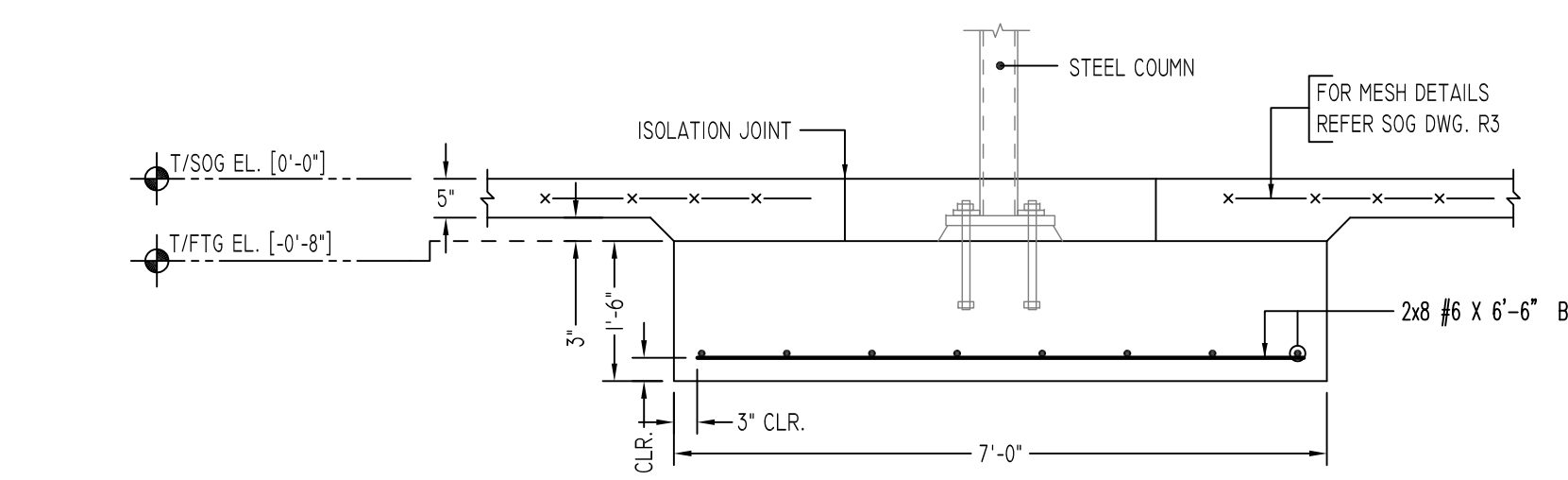


**F6.0-(6'-0"x6'-0"x1'-6")**  
 GRID-B/2,4 & 5  
**SECTION 1**  
 SCALE - 1/2"=1'-0"  
 REF-S-101, & H/S-301  
 (# 3 LOCATIONS)



**F7.0-(7'-0"x7'-0"x1'-6")**  
 GRID-B/3  
**SECTION 2**  
 SCALE - 1/2"=1'-0"  
 REF-S-101, & H/S-301

**FOUNDATION REINFORCEMENT DETAILS**  
 SCALE - 1/8"=1'-0"  
 REF-S-101, S-301, S-401

**LEGEND:**

- W2.0 → FOUNDATION MARK
- FXX/PX  
T/FTG EL. XX.XX' → FOOTING & PIER MARK  
TOP OF FTG ELEVATION
- X  
XX → ELEVATION MARK  
DRAWING SHEET NUMBER

| FOOTING SCHEDULE |   |             |       |                                  |
|------------------|---|-------------|-------|----------------------------------|
| MARK             | GRID                                    | SIZE        | DEPTH | REINF.                           |
| W2.0 (TYP)       | -                                       | 2'-0" CONT. | 1'-0" | (3)#5 CONT.<br>#5@48" O/C TRANS. |
| F6.0             | A-2&3, A1-4&5, B-1,2,4,5,6<br>C-2,3,4,5 | 6'-0"x6'-0" | 1'-6" | (8)- #5 E.W.B.                   |
| F7.0             | A-1, A1-6, B-3, C-1&6                   | 7'-0"x7'-0" | 1'-6" | (8)- #6 E.W.B.                   |

ALL BARS IN THIS DRAWING  
 ASTM A615 GRADE 60  
 BLACK UNCOATED

| PIER SCHEDULE |                 |               |            |
|---------------|-----------------|---------------|------------|
| TYPE          | SIZE            | REINFORCEMENT |            |
|               | LENGTH x WIDTH  | VERTICAL      | TIES       |
| PI            | 1'-10" x 1'-10" | (8) - #6      | #3@8" O/C. |

(AVE PLEASE VERIFY LAP VALUE (TYP.))

| FOR FOUNDATION<br>LAP SCHEDULE |          |        |
|--------------------------------|----------|--------|
| SIZE                           | 3000 PSI |        |
|                                | TOP      | OTHERS |
| #3                             | 28"      | 22"    |
| #4                             | 37"      | 29"    |
| #5                             | 47"      | 36"    |
| #6                             | 56"      | 43"    |
| #7                             | 81"      | 63"    |
| #8                             | 93"      | 72"    |
| #9                             | 105"     | 81"    |
| #10                            | 118"     | 91"    |
| #11                            | 131"     | 101"   |

| TYPICAL REINFORCING BAR CLEARANCE TABLE |            |
|---|------------|
| LOCATION                                | MIN. COVER |
| FOOTINGS AGAINST EARTH                  | 3" CLR     |
| COLUMNS AND PIERS (TIES, REINF.)        | 1 1/2" CLR |
| EXPOSED TO EARTH (#5 & SMALLER)         | 1 1/2" CLR |
| EXPOSED TO EARTH (#6 & LARGER)          | 2" CLR     |
| SLAB & WALLS                            | 3/4" CLR   |

**Abbreviations:**  
 IF=Inside Face  
 OF=Outside Face  
 EF=Each Face  
 DWLS=Dowels  
 V=Vertical  
 H=Horizontal  
 COR=Corner  
 SLAB DWLS=Slab Dowels  
 EW=Each Way  
 B=Bottom  
 T=Top  
 M DWL= Masonry Dowel  
 BB=Bond Beam  
 TB= Tie Beam  
 APPROX= Approximate  
 ES=Each Side

OPNG=Opening  
 BAL= Balance  
 BTW=Between  
 C=Construction Joint  
 CLR= CLEARANCE  
 CMU= Concrete Masonry Unit  
 CONT=Continuous  
 ELEV=Elevation  
 EMBED=Embedment  
 SW = Short Way  
 LW=Long Way  
 (BL)=Black Bar  
 (EP)=Epoxy Bar  
 (GA)= Galvanized  
 (TB)= Threaded Bar  
 (CB)= Coupler Bar

**NOTICE**

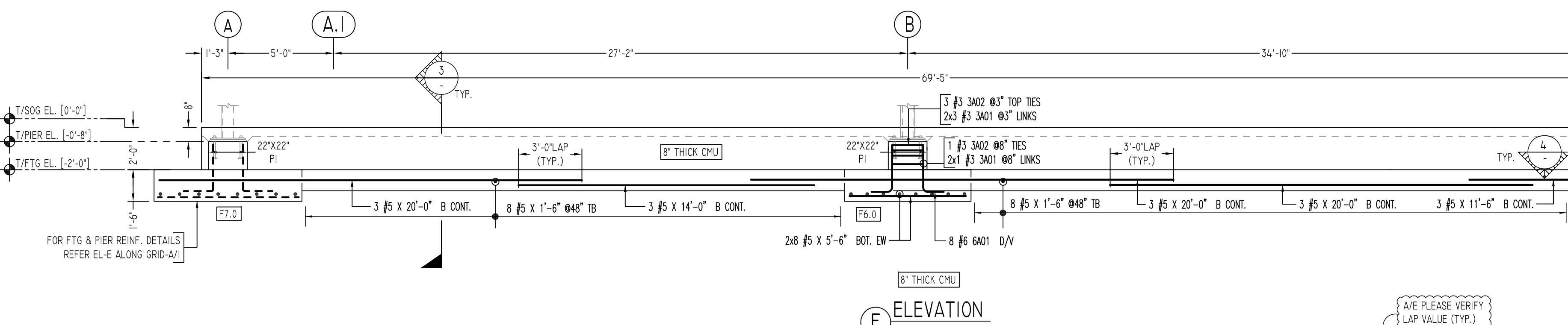
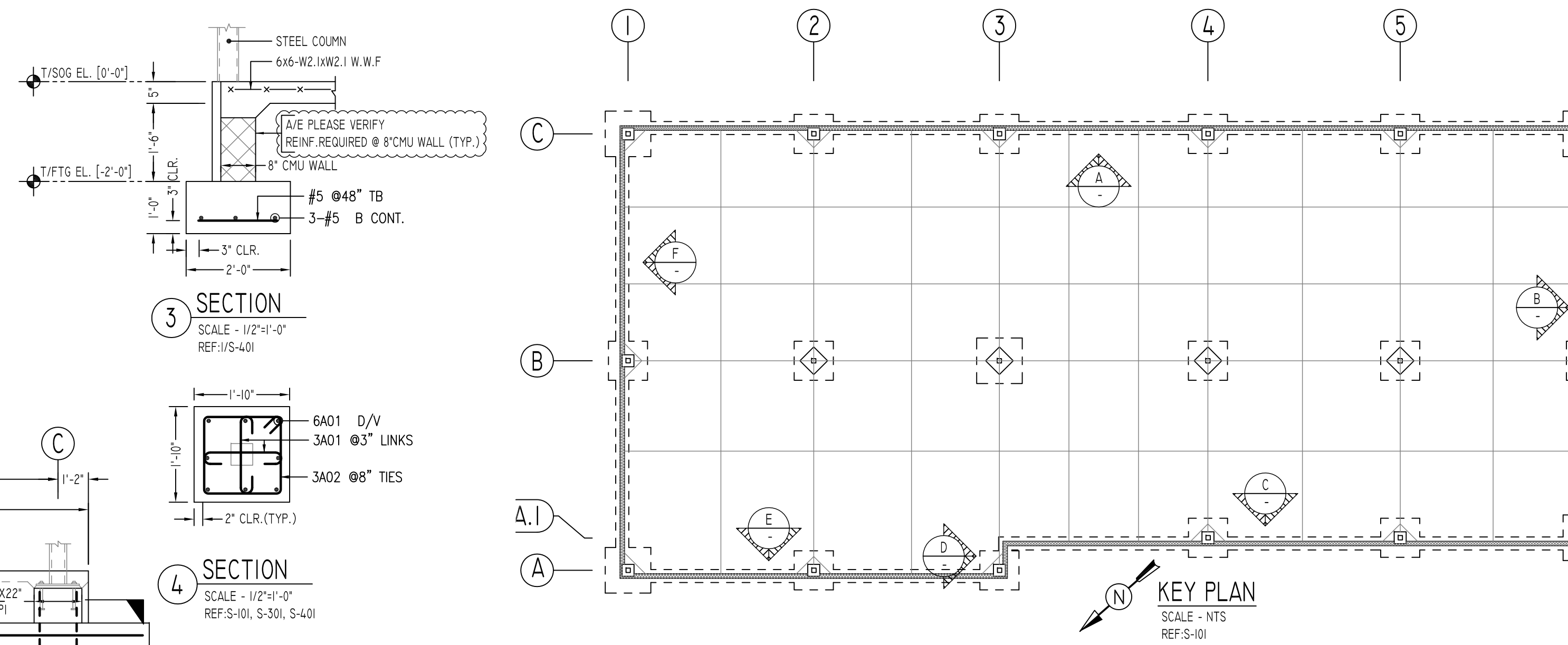
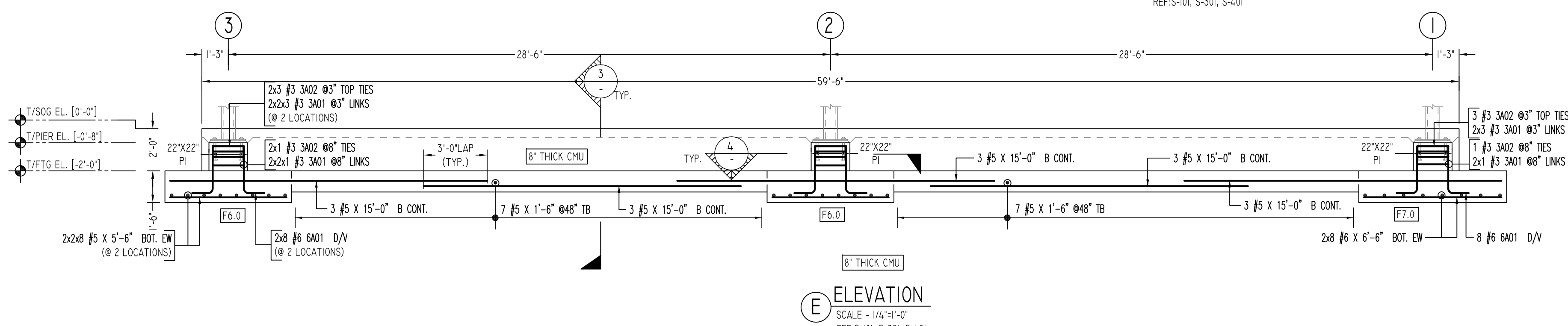
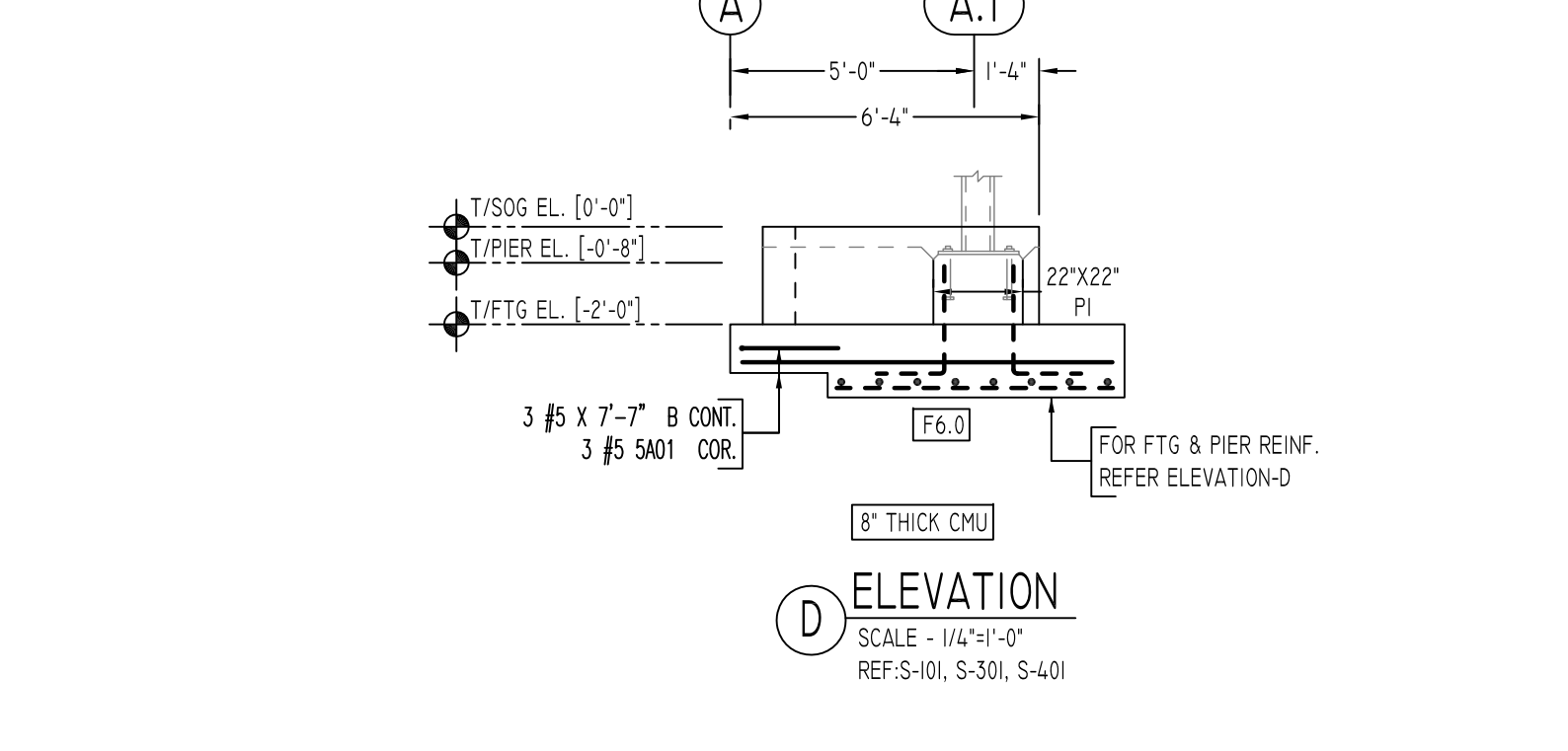
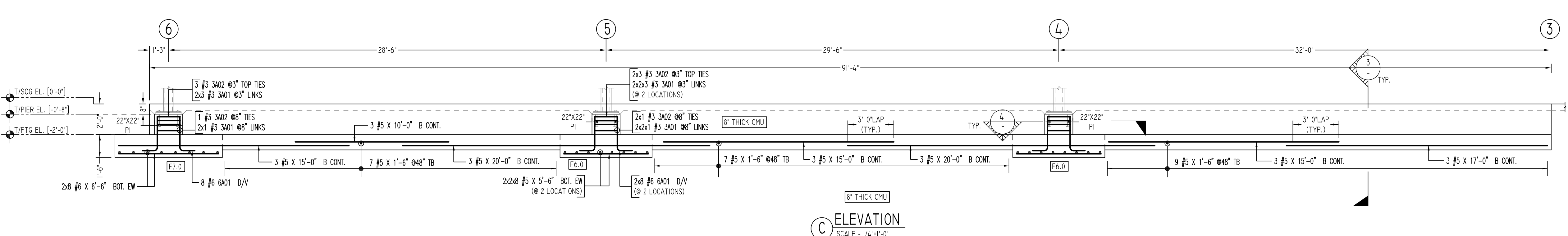
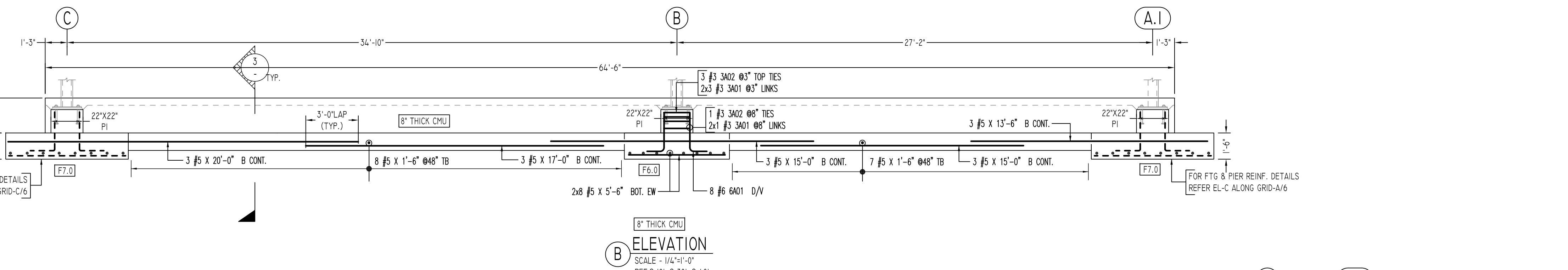
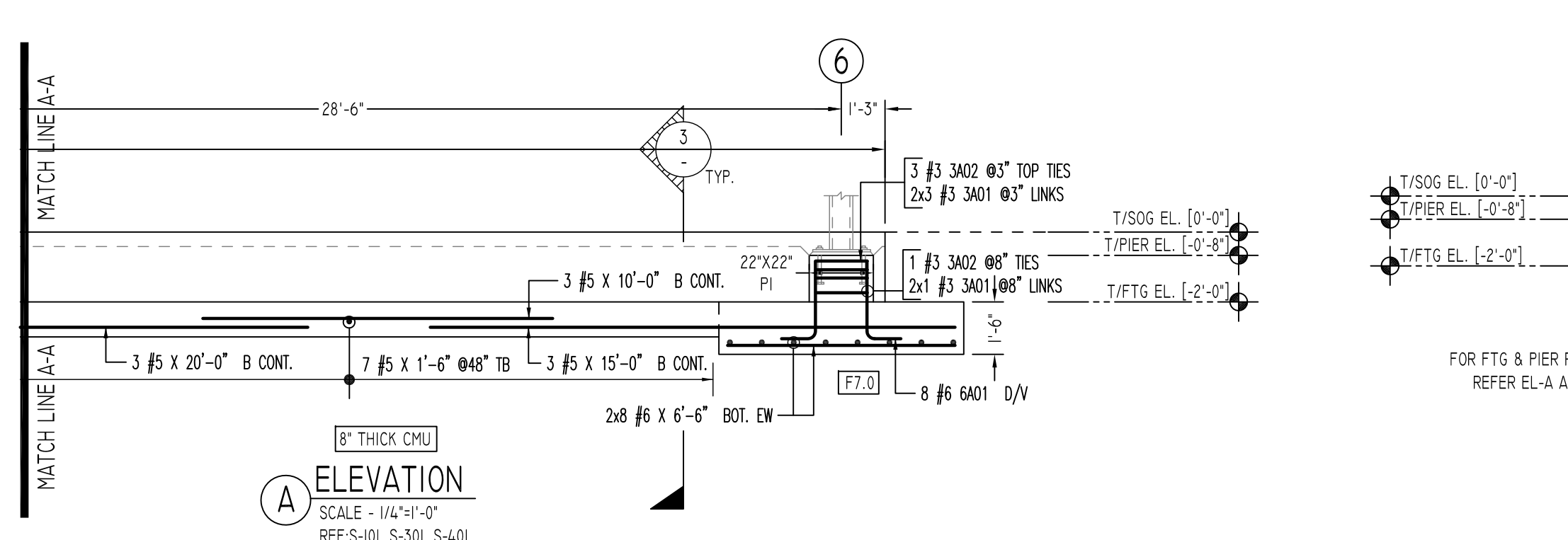
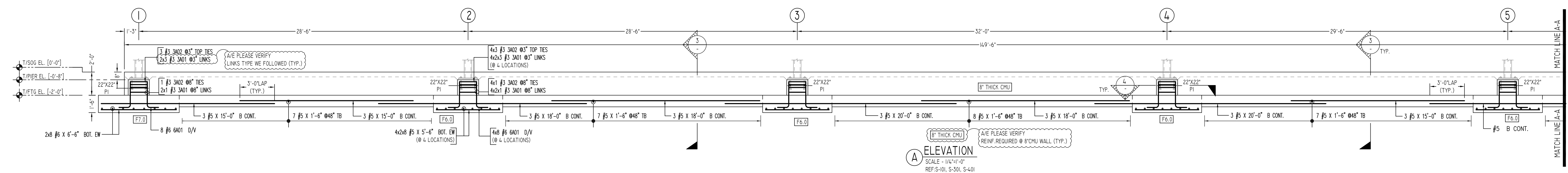
Shortages, improper fabrication or claims for any other reason must be reported to this company within a period of 15 days of delivery. This company reserves the right to field inspect prior to replacement or reconditioning of nonconforming material, and will not honor charges for work done in the field without specific authorization from this company.

REINFORCING STEEL PLACING DRAWINGS ONLY USE IN CONJUNCTION WITH CONTRACT DRAWINGS & SPECIFICATIONS. ELEVATIONS & DIMENSIONS SHOWN ON THIS DRAWING ARE FOR DETAILING PURPOSES ONLY AND SHOULD NOT BE USED FOR CONSTRUCTION UNLESS VERIFIED BY ENGINEER OR CONTRACTOR.

| REVISION MARK | REVISION DETAILS | DATE       |
|---------------|------------------|------------|
| 0             | FOR APPROVAL     | 04/26/2021 |

|                |                           |       |          |              |     |                                  |              |    |
|----------------|---------------------------|-------|----------|--------------|-----|----------------------------------|--------------|----|
| PROJECT        | UNITED WAY DAYCARE CENTER |       |          |              |     |                                  |              |    |
| LOCATION       | COLUMBIA, MD 21046        |       |          |              |     |                                  |              |    |
| ARCHITECT      | GEORGE VAETH ASSOCIATES   |       |          |              |     |                                  |              |    |
| ENGINEER       | CARROLL ENGINEERING       |       |          |              |     |                                  |              |    |
| CUSTOMER       | -                         |       |          |              |     |                                  |              |    |
| DRAWN BY:      | MRS                       | DATE: | 04/26/21 | REVIEWED BY: | T/L | JOB NO.:                         | -            |    |
| DRAWING TITLE: |                           |       |          |              |     | FOUNDATION REINFORCEMENT DETAILS | DRAWING NO.: | R1 |



**ALL BARS IN THIS DRAWING  
ASTM A615 GRADE 60  
BLACK UNCOATED**

| TYPE | SIZE   |         | REINFORCEMENT          |
|------|--------|---------|------------------------|
|      | LENGTH | X WIDTH |                        |
| PI   | 1'-10" | 1'-10"  | (8) - #6<br>#398" O/C. |

| Bar Mark | Qty | Size | Total Length | Type | X         | Y     | Z     | W     | V | U | T | S         | R | Q | P |
|----------|-----|------|--------------|------|-----------|-------|-------|-------|---|---|---|-----------|---|---|---|
| 3A01     | 112 | #3   | 2'-4"        | 1    | 0'-5"     | 1'-6" |       |       |   |   |   |           |   |   |   |
| 3A02     | 56  | #3   | 6'-8 1/2"    | 11   | 0'-4 X 1" | 1'-6" | 1'-6" | 1'-6" |   |   |   | 0'-4 X 1" |   |   |   |
| 3A01     | 3   | #5   | 4'-0"        | 17   | 2'-0"     | 2'-0" |       |       |   |   |   |           |   |   |   |
| 6A01     | 112 | #6   | 3'-5"        | 2    | 1'-0"     | 2'-3" |       |       |   |   |   |           |   |   |   |

| MARK       | GRID                                    | SIZE        | DEPTH | REINF.                           |
|------------|---|-------------|-------|----------------------------------|
| W2.0 (TYP) | -                                       | 2'-0" CONT. | 1'-0" | (3)#5 CONT.<br>#5@48" O/C TRANS. |
| F6.0       | A-2&3, A1-4&5, B-1,2,4,5,6<br>C-2,3,4,5 | 6'-0"x6'-0" | 1'-6" | (8) - #5 E.W.B.                  |
| F7.0       | A-1, A1-6, B-3, C-1&6                   | 7'-0"x7'-0" | 1'-6" | (8) - #6 E.W.B.                  |

| SIZE | 3000 PSI |        |
|------|----------|--------|
|      | TOP      | OTHERS |
| #3   | 28"      | 22"    |
| #4   | 37"      | 29"    |
| #5   | 47"      | 36"    |
| #6   | 56"      | 43"    |
| #7   | 81"      | 63"    |
| #8   | 93"      | 72"    |
| #9   | 105"     | 81"    |
| #10  | 118"     | 91"    |
| #11  | 131"     | 101"   |

| LOCATION                         | MIN. COVER |
|----------------------------------|------------|
| FOOTINGS AGAINST EARTH           | 3" CLR     |
| COLUMNS AND PIERS (TIES, REINF.) | 1 1/2" CLR |
| EXPOSED TO EARTH (#5 & SMALLER)  | 1 1/2" CLR |
| EXPOSED TO EARTH (#6 & LARGER)   | 2" CLR     |
| SLAB & WALLS                     | 3/4" CLR   |

**Abbreviations:**  
 IF=Inside Face  
 OF=Outside Face  
 EF=Each Face  
 DWLS=Dowels  
 V=Vertical  
 H=Horizontal  
 COR=Corner  
 SLAB DWLS=Slab Dowels  
 EW=Each Way  
 B=Bottom  
 T=Top  
 M DWL= Masonry Dowel  
 BB=Bond Beam  
 TB=Tie Beam  
 APPROX= Approximate  
 ES=Each Side

**OPNG=Opening**  
 BAL= Balance  
 BTW=Between  
 CJ=Construction Joint  
 CLR= CLEARANCE  
 CMU= Concrete Masonry Unit  
 CONT=Continuous  
 ELEV=Elevation  
 EMBED=Embedment  
 SW= Short Way  
 LW=Long Way  
 BL=Black Bar  
 (EP)=Epoxy Bar  
 (GA)=Galvanized  
 (TB)= Threaded Bar  
 (CB)= Coupler Bar

**NOTICE**  
 Shortages, improper fabrication or claims for any other reason must be reported to this company within a period of 15 days of delivery. This company reserves the right to field inspect prior to replacement or reconditioning of nonconforming material, and will not honor charges for work done in the field without specific authorization from this company.

REINFORCING STEEL PLACING DRAWINGS ONLY USE IN CONJUNCTION WITH CONTRACT DRAWINGS & SPECIFICATIONS. ELEVATIONS & DIMENSIONS SHOWN ON THIS DRAWING ARE FOR DETAILING PURPOSES ONLY AND SHOULD NOT BE USED FOR CONSTRUCTION UNLESS VERIFIED BY ENGINEER OR CONTRACTOR.

| REVISION MARK | REVISION DETAILS | DATE       |
|---------------|------------------|------------|
| 0             | FOR APPROVAL     | 04/26/2021 |

|                |                                  |          |              |
|----------------|----------------------------------|----------|--------------|
| PROJECT        | UNITED WAY DAYCARE CENTER        |          |              |
| LOCATION       | COLUMBIA, MD 21046               |          |              |
| ARCHITECT      | GEORGE VAETH ASSOCIATES          |          |              |
| ENGINEER       | CARROLL ENGINEERING              |          |              |
| CUSTOMER       | -                                |          |              |
| DRAWN BY:      | MRS                              | DATE:    | 04/26/21     |
| REVIEWED BY:   | T/L                              | JOB NO.: | -            |
| DRAWING TITLE: | FOUNDATION REINFORCEMENT DETAILS |          | DRAWING NO.: |
|                |                                  |          | R2           |