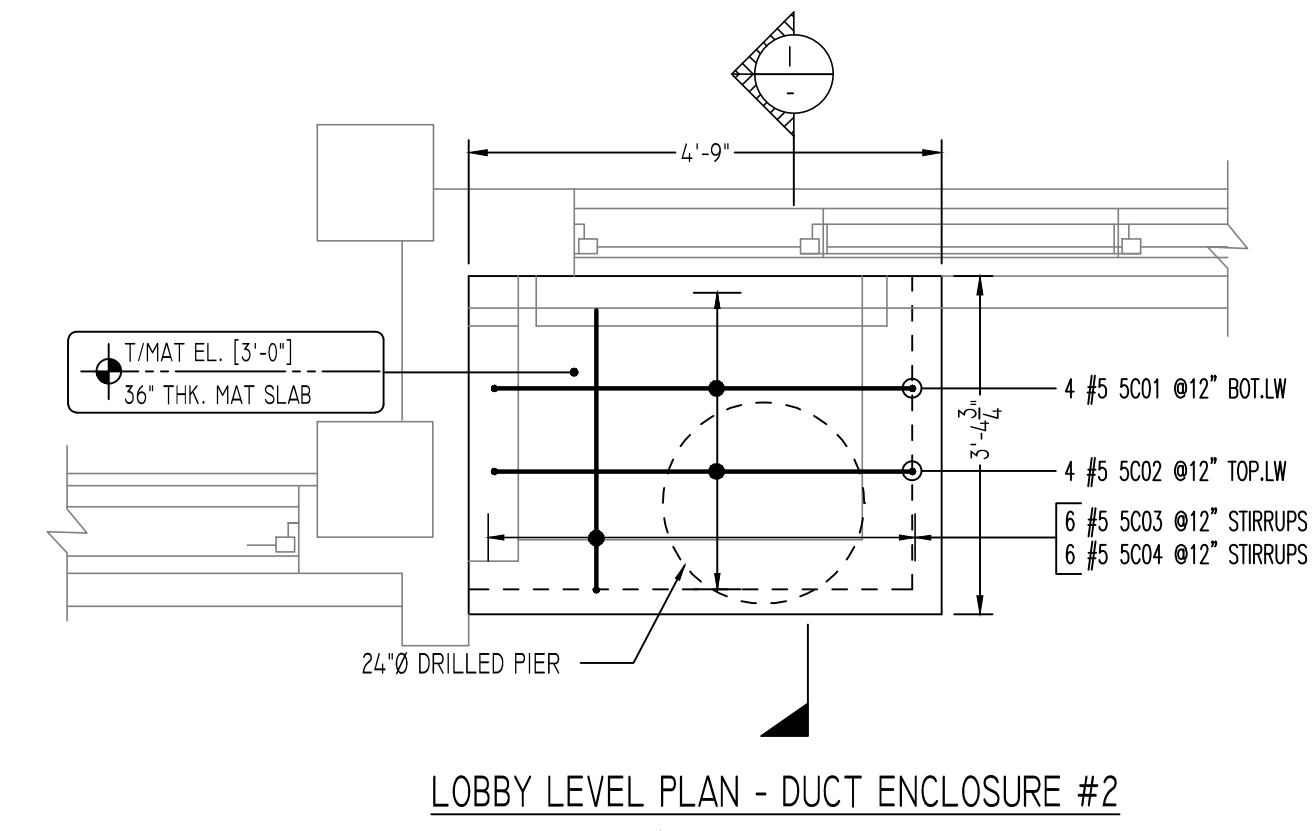
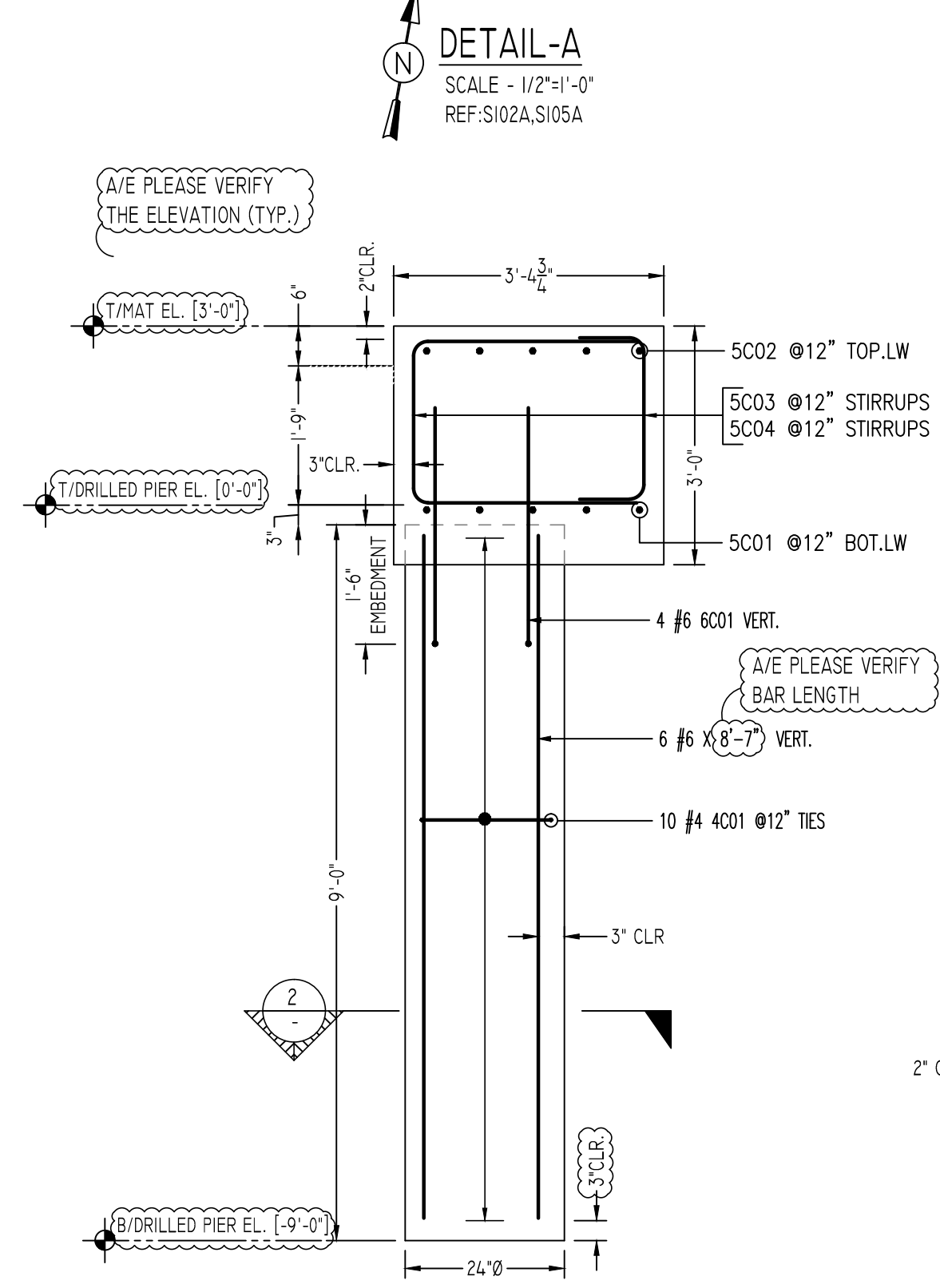


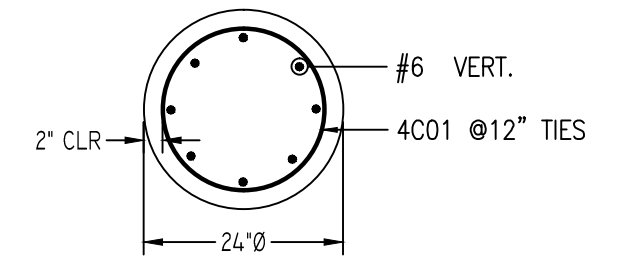
**LOBBY LEVEL PLAN - WEST TOWER AND CONNECTOR**  
 SCALE - 1/8"=1'-0"  
 REF: S102A



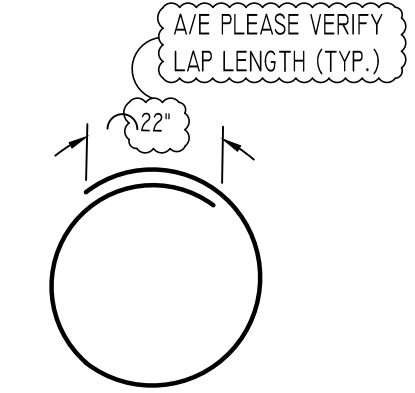
**LOBBY LEVEL PLAN - DUCT ENCLOSURE #2**



**SECTION 1**  
 SCALE - 1/2"=1'-0"  
 REF: S102A, S105A & 6/S203

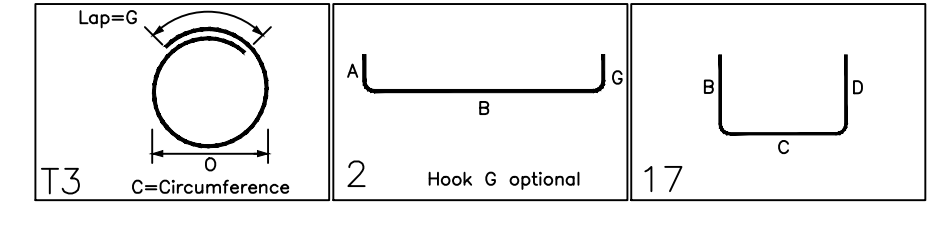


**SECTION 2**  
 SCALE - 1/2"=1'-0"  
 REF: S102A, S105A & 6/S203



Release Number: R5

Bar Mark	Qty	Size	Total Length	Type	X	Y	Z	W	V	U	T	S	R	Q	P
4001	10	#4	7'-0"	T3			5'-2"								1'-8"
5001	4	#5	5'-11"	2	0'-10"	4'-3"									0'-10"
5002	4	#5	5'-11"	2	0'-10"	4'-3"									0'-10"
5003	6	#5	7'-9"	17			2'-10"	2'-1"	2'-10"						
5004	6	#5	3'-9"	2	0'-10"	2'-1"									0'-10"
6001	4	#6	3'-6"	17			0'-6"	3'-0"							



FOR DRILLED PIER & SLAB ON GRADE

**LAP SCHEDULE**

SIZE	3000 PSI	
	TOP	OTHERS
#3	28"	22"
#4	37"	29"
#5	47"	36"
#6	56"	43"
#7	81"	63"
#8	93"	72"
#9	105"	81"
#10	118"	91"
#11	131"	101"

FOR FDN. WALLS & GRADE BEAMS

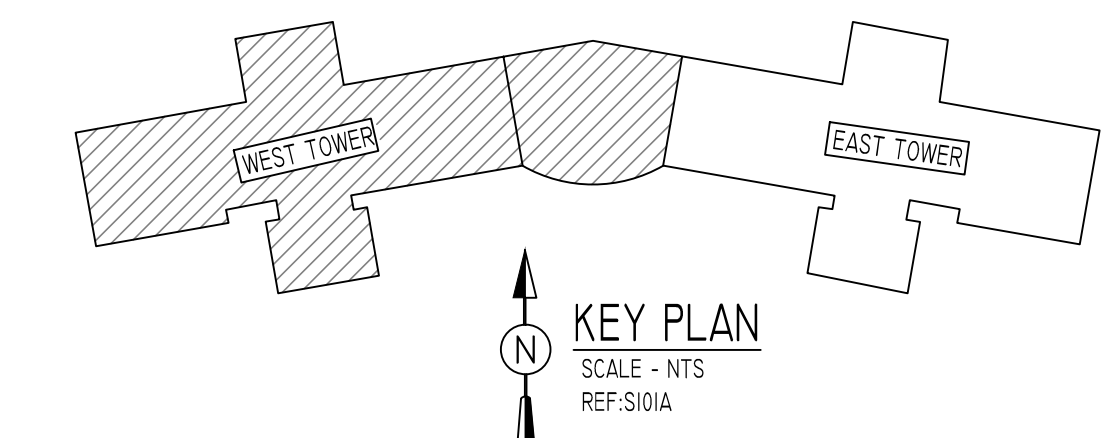
**LAP SCHEDULE**

SIZE	4000 PSI	
	TOP	OTHERS
#3	21"	19"
#4	32"	25"
#5	40"	31"
#6	48"	37"
#7	70"	54"
#8	80"	62"
#9	91"	70"
#10	102"	79"
#11	113"	87"

TYPICAL REINFORCING BAR CLEARANCE TABLE

LOCATION	MIN. COVER
DRILLED PIER	
SIDE TIES	3" CLR
TIES	2" CLR
GRADE BEAM	
SIDE TIES	3" CLR
TIES	2" CLR
CONC. PIER & SLAB	2" CLR

**ALL BARS IN THIS DRAWING  
 ASTM A615 GRADE 60  
 BLACK UNCOATED**



**KEY PLAN**  
 SCALE - NTS  
 REF: S101A

Abbreviations:  
 IF=Inside Face  
 OF=Outside Face  
 EF=Each Face  
 DWLS=Dowels  
 V=Vertical  
 H=Horizontal  
 COR=Corner  
 SLAB DWLS=Slab Dowels  
 EW=Each Way  
 B=Bottom  
 T=Top  
 M DWL= Masonry Dowel  
 BB=Bond Beam  
 ALT: Alternate  
 APPROX: Approximate  
 ES=Each Side

OPNG=Opening  
 BAL: Balance  
 BTW=Between  
 CJ=Construction Joint  
 CLR=CLEARANCE  
 CML=Concrete Masonry Unit  
 CONT=Continuous  
 Elev=Elevation  
 EMBED=Embedment  
 SW=Short Way  
 LW=Long Way  
 (BL)=Black Bar  
 (EP)=Epoxy Bar  
 (GA)=Galvanized  
 (TB)=Threaded Bar  
 (CB)=Coupler Bar

**NOTICE**

Shortages, improper fabrication or claims for any other reason must be reported to this company within a period of 15 days of delivery. This company reserves the right to field inspect prior to replacement or reconditioning of nonconforming material, and will not honor charges for work done in the field without specific authorization from this company.

REINFORCING STEEL PLACING DRAWINGS ONLY USE IN CONJUNCTION WITH CONTRACT DRAWINGS & SPECIFICATIONS. ELEVATIONS & DIMENSIONS SHOWN ON THIS DRAWING ARE FOR DETAILING PURPOSES ONLY AND SHOULD NOT BE USED FOR CONSTRUCTION UNLESS VERIFIED BY ENGINEER OR CONTRACTOR.

REVISION MARK	REVISION DETAILS	DATE
0	FOR APPROVAL	04/27/2021

PROJECT	LOYOLA NEWMAN TOWERS HVAC REPLACEMENT		
LOCATION	BALTIMORE, MD 21210		
ARCHITECT	HORD COPLAND MACHT		
ENGINEER	WHITNEY BALLY COX & MAGNANI		
CUSTOMER	-		
DRAWN BY:	MRS	DATE:	04/27/21
REVIEWED BY:	T/L	JOB NO.:	-
DRAWING TITLE:	LOBBY LEVEL PLAN WEST TOWER AND CONNECTOR		
DRAWING NO.:	R5		