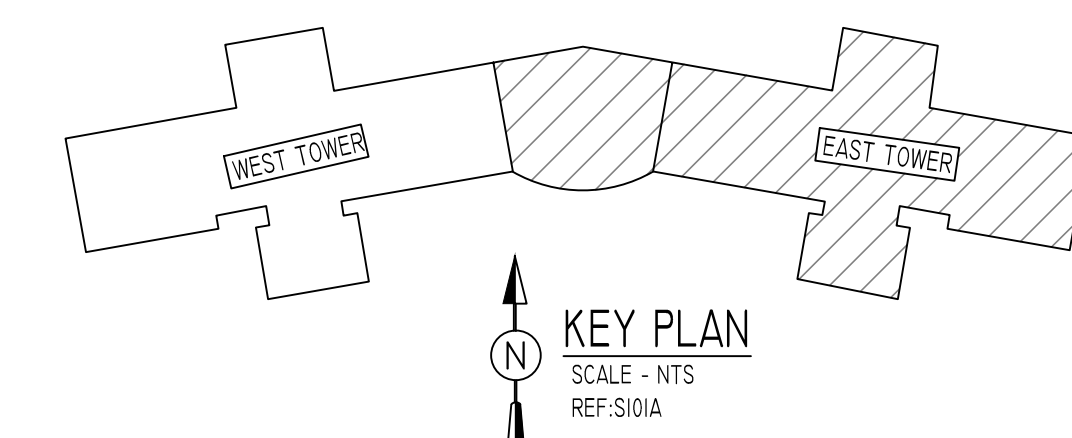


LOBBY LEVEL PLAN - EAST TOWER AND CONNECTOR
 SCALE - 1/8"=1'-0"
 REF:SI02B



KEY PLAN
 SCALE - NTS
 REF:SI01A

FOR DRILLED PIER & SLAB ON GRADE

| LAP SCHEDULE | | |
|--------------|----------|--------|
| SIZE | 3000 PSI | |
| | TOP | OTHERS |
| #3 | 28" | 22" |
| #4 | 37" | 29" |
| #5 | 47" | 36" |
| #6 | 56" | 43" |
| #7 | 81" | 63" |
| #8 | 93" | 72" |
| #9 | 105" | 81" |
| #10 | 118" | 91" |
| #11 | 131" | 101" |

FOR FDN. WALLS & GRADE BEAMS

| LAP SCHEDULE | | |
|--------------|----------|--------|
| SIZE | 4000 PSI | |
| | TOP | OTHERS |
| #3 | 24" | 19" |
| #4 | 32" | 25" |
| #5 | 40" | 31" |
| #6 | 48" | 37" |
| #7 | 70" | 54" |
| #8 | 80" | 62" |
| #9 | 91" | 70" |
| #10 | 102" | 79" |
| #11 | 113" | 87" |

TYPICAL REINFORCING BAR CLEARANCE TABLE

| LOCATION | MIN. COVER |
|-------------------|------------|
| DRILLED PIER | |
| SIDE | 3" CLR |
| TIES | 2" CLR |
| GRADE BEAM | |
| SIDE | 3" CLR |
| TIES | 2" CLR |
| CONC. PIER & SLAB | 2" CLR |

ALL BARS IN THIS DRAWING
 ASTM A615 GRADE 60
 BLACK UNCOATED

Abbreviations:
 IF=Inside Face
 OF=Outside Face
 EF=Each Face
 DWLS=Dowels
 V=Vertical
 H=Horizontal
 COR=Corner
 SLAB DWLS=Slab Dowels
 EW=Each Way
 B=Bottom
 T=Top
 MDWL= Masonry Dowel
 BB=Bond Beam
 ALT: Alternate
 APPROX: Approximate
 ES=Each Side

OPNG=Opening
 BAL: Balance
 BTW=Between
 CJ=Construction Joint
 CLR= CLEARANCE
 CMU= Concrete Masonry Unit
 CONT=Continuous
 Elev=Elevation
 EMBED=Embedment
 SW = Short Way
 LW=Long Way
 BL=Black Bar
 (EP)=Epoxy Bar
 (GA)= Galvanized
 (TB)= Threaded Bar
 (CB)= Coupler Bar

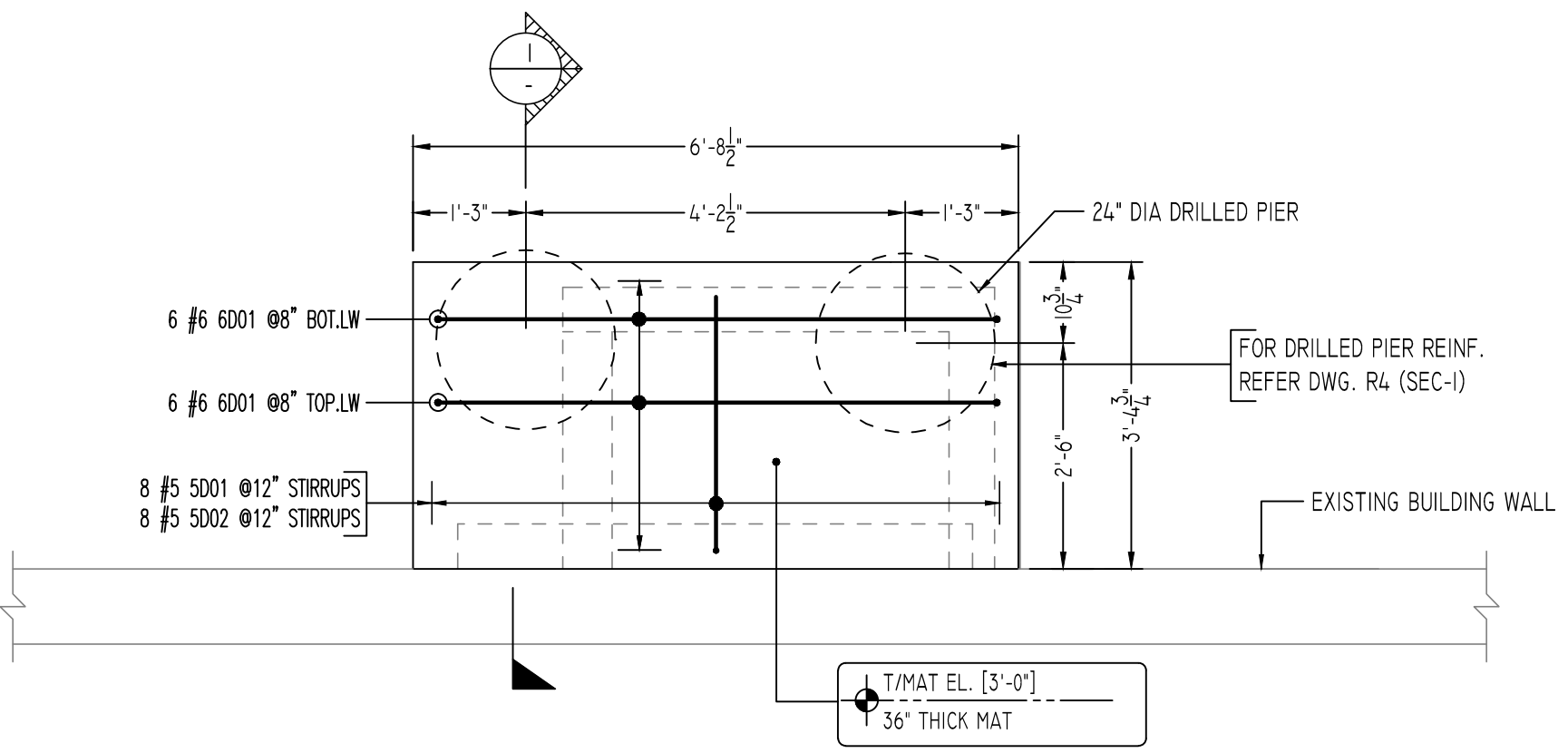
NOTICE

Shortages, improper fabrication or claims for any other reason must be reported to this company within a period of 15 days of delivery. This company reserves the right to field inspect prior to replacement or reconditioning of nonconforming material, and will not honor charges for work done in the field without specific authorization from this company.

REINFORCING STEEL PLACING DRAWINGS ONLY USE IN CONJUNCTION WITH CONTRACT DRAWINGS & SPECIFICATIONS. ELEVATIONS & DIMENSIONS SHOWN ON THIS DRAWING ARE FOR DETAILING PURPOSES ONLY AND SHOULD NOT BE USED FOR CONSTRUCTION UNLESS VERIFIED BY ENGINEER OR CONTRACTOR.

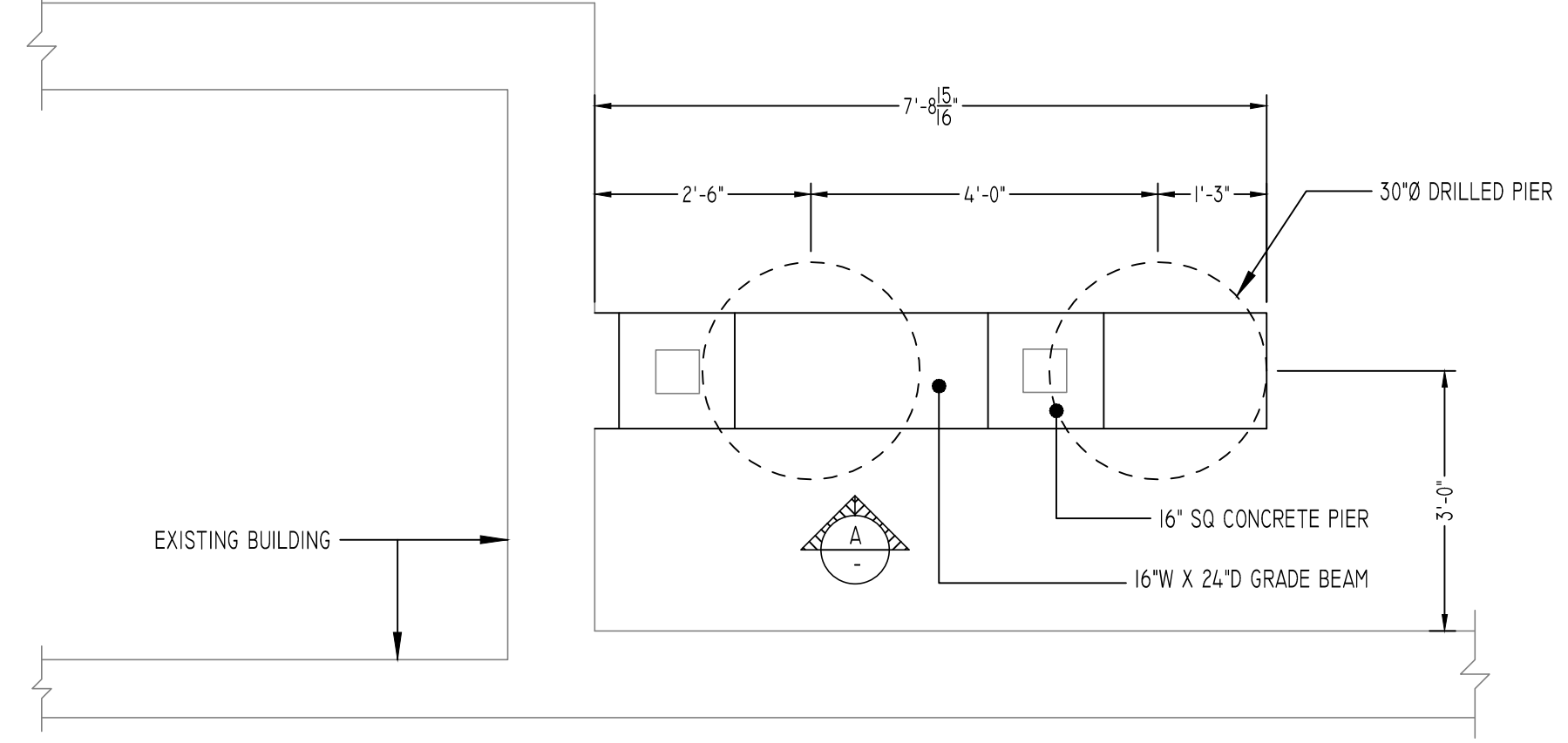
| REVISION MARK | REVISION DETAILS | DATE |
|---------------|------------------|------------|
| 0 | FOR APPROVAL | 04/27/2021 |

| | | | |
|--------------------------|---------------------------------------|--------------|----------|
| PROJECT | LOYOLA NEWMAN TOWERS HVAC REPLACEMENT | | |
| LOCATION | BALTIMORE, MD 21210 | | |
| ARCHITECT | HORD COPLAND MACHT | | |
| ENGINEER | WHITNEY BALLY COX & MAGNANI | | |
| CUSTOMER | - | | |
| DRAWN BY: | MRS | DATE: | 04/27/21 |
| REVIEWED BY: | T/L | JOB NO.: | - |
| DRAWING TITLE: | | DRAWING NO.: | |
| LOBBY LEVEL PLAN | | R6 | |
| EAST TOWER AND CONNECTOR | | | |



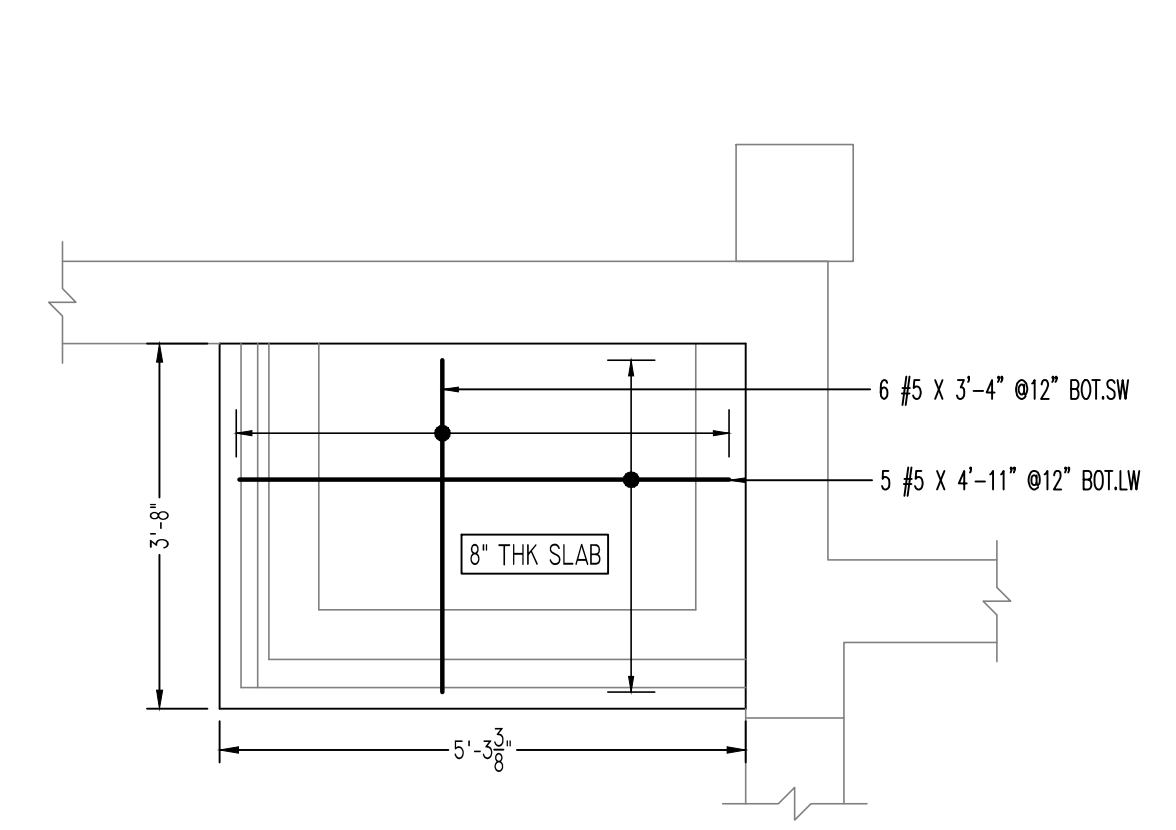
LOBBY LEVEL PART PLAN - DUCT ENCLOSURE #5

DETAIL-A
SCALE - 1/2"=1'-0"
REF:SI02B,A/SI05B & 7/S203



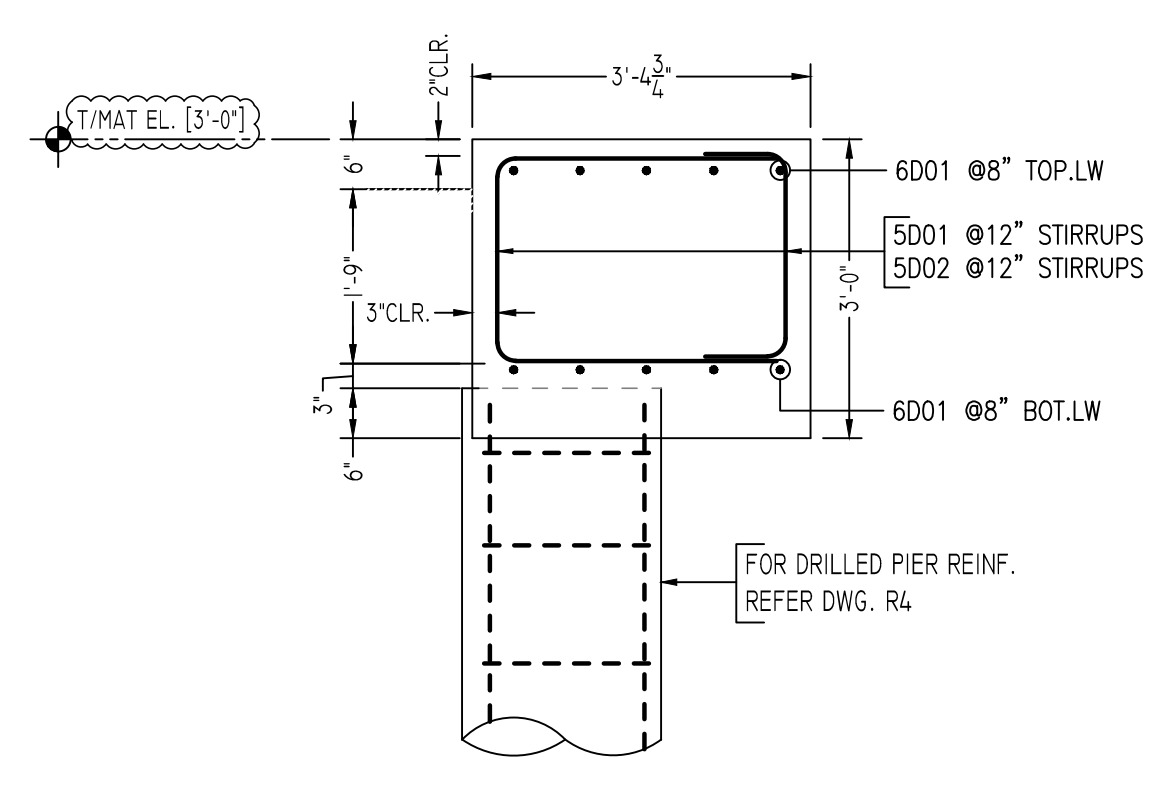
DRILLED PIER, GRADE BEAM AND PIER

DETAIL-B
SCALE - 1/2"=1'-0"
REF:SI02B & 5/S202

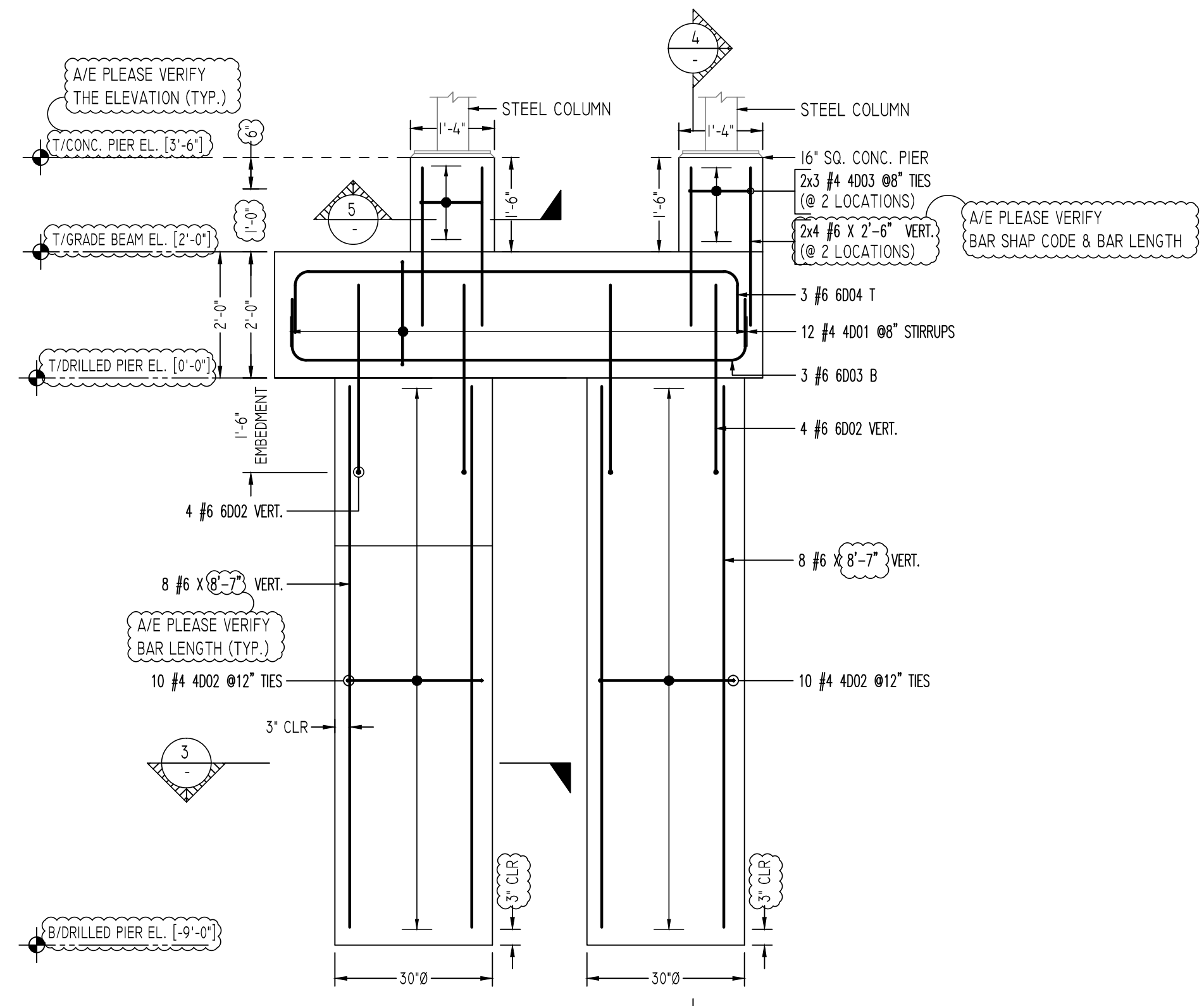


LOBBY LEVEL PART PLAN-DUCT ENCLOSURE #7

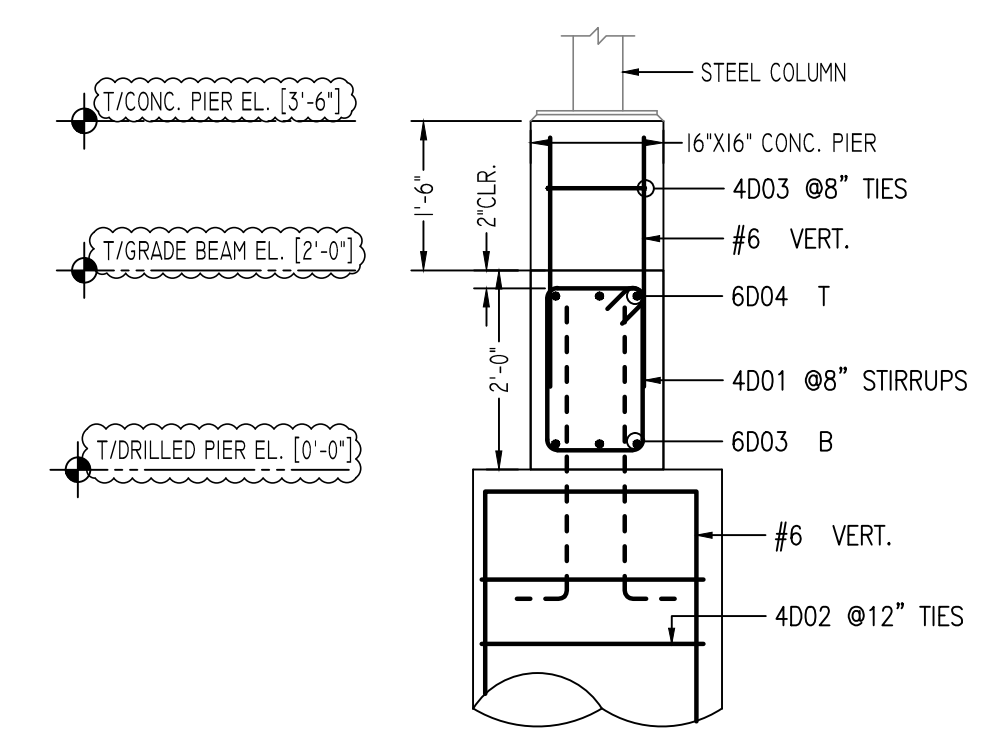
DETAIL-C
SCALE - 1/2"=1'-0"
REF:SI02B & 9/S203



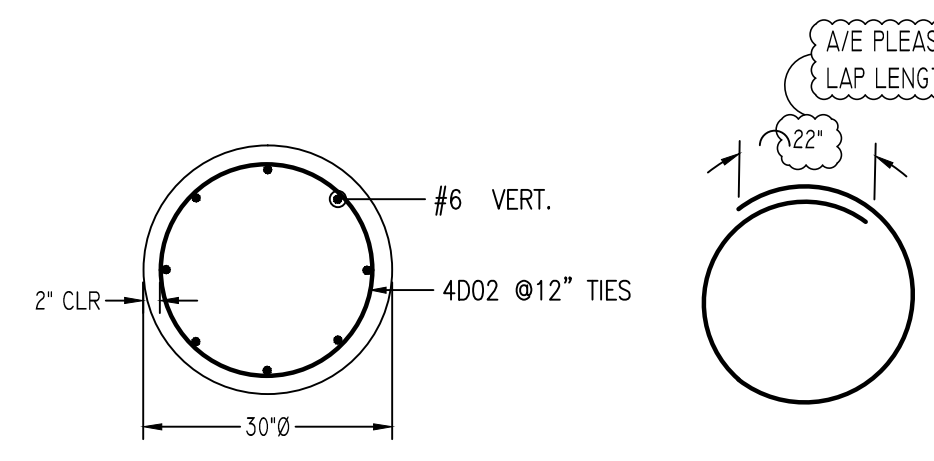
SECTION 1
SCALE - 1/2"=1'-0"
REF:SI02B,A/SI05B & 7/S203



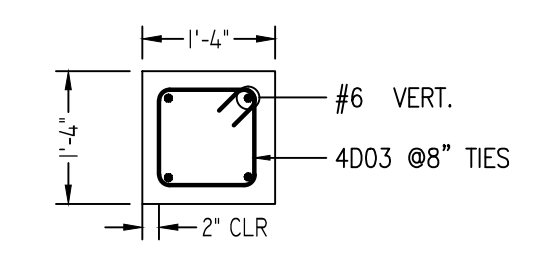
ELEVATION A
SCALE - 1/2"=1'-0"
REF:SI02B & 5/S202



SECTION 4
SCALE - 1/2"=1'-0"
REF:SI02B & 5/S202

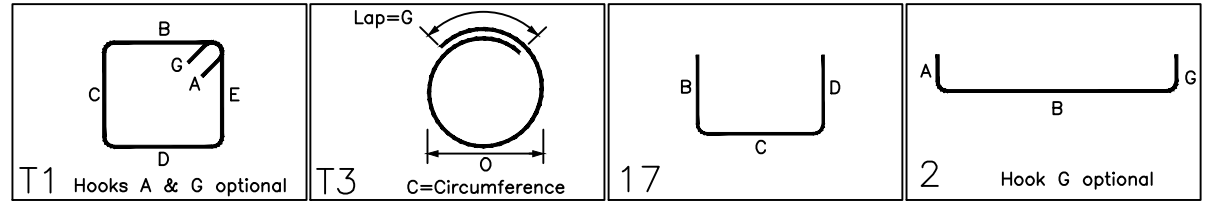


SECTION 3
SCALE - 1/2"=1'-0"
REF:SI02B & 5/S202



SECTION 5
SCALE - 1/2"=1'-0"
REF:SI02B & 5/S202

| Bar Mark | Qty | Size | Total Length | Type | X' | Y' | Z' | W' | V' | U' | T' | S' | R' | Q' | P' | O' | N' | M' | L' | K' | J' | I' | H' | G' | F' | E' | D' | C' | B' | A' | | | | |
|----------|-----|------|--------------|------|--------|--------|--------|--------|-------|----|----|----|----|----|----|----|----|----|----|----|----|----|----|----|----|----|----|----|----|----|--|--|--|--|
| 4001 | 12 | #4 | 6'-11" | T1 | 0'-4" | 1'-0" | 1'-8" | 1'-0" | 1'-8" | | | | | | | | | | | | | | | | | | | | | | | | | |
| 4002 | 20 | #4 | 8'-7" | T3 | | | 6'-9" | | | | | | | | | | | | | | | | | | | | | | | | | | | |
| 4003 | 8 | #4 | 2'-9" | T1 | 0'-4" | 1'-0" | 1'-0" | 1'-0" | 1'-0" | | | | | | | | | | | | | | | | | | | | | | | | | |
| 5001 | 8 | #5 | 7'-9" | T1 | 2'-10" | 2'-10" | 2'-11" | 2'-10" | | | | | | | | | | | | | | | | | | | | | | | | | | |
| 5002 | 8 | #5 | 3'-9" | T2 | 0'-10" | 2'-11" | 2'-10" | | | | | | | | | | | | | | | | | | | | | | | | | | | |
| 6001 | 12 | #6 | 8'-3" | T2 | 1'-0" | 6'-5" | | | | | | | | | | | | | | | | | | | | | | | | | | | | |
| 6002 | 8 | #6 | 3'-6" | T3 | 0'-6" | 3'-0" | | | | | | | | | | | | | | | | | | | | | | | | | | | | |
| 6003 | 3 | #6 | 9'-3" | T2 | 1'-0" | 7'-3" | | | | | | | | | | | | | | | | | | | | | | | | | | | | |
| 6004 | 3 | #6 | 9'-11" | T2 | 1'-0" | 7'-11" | | | | | | | | | | | | | | | | | | | | | | | | | | | | |



FOR DRILLED PIER & SLAB ON GRADE

| SIZE | 3000 PSI | |
|------|----------|--------|
| | TOP | OTHERS |
| #3 | 28" | 22" |
| #4 | 37" | 29" |
| #5 | 47" | 36" |
| #6 | 56" | 43" |
| #7 | 81" | 63" |
| #8 | 95" | 72" |
| #9 | 105" | 81" |
| #10 | 116" | 91" |
| #11 | 131" | 101" |

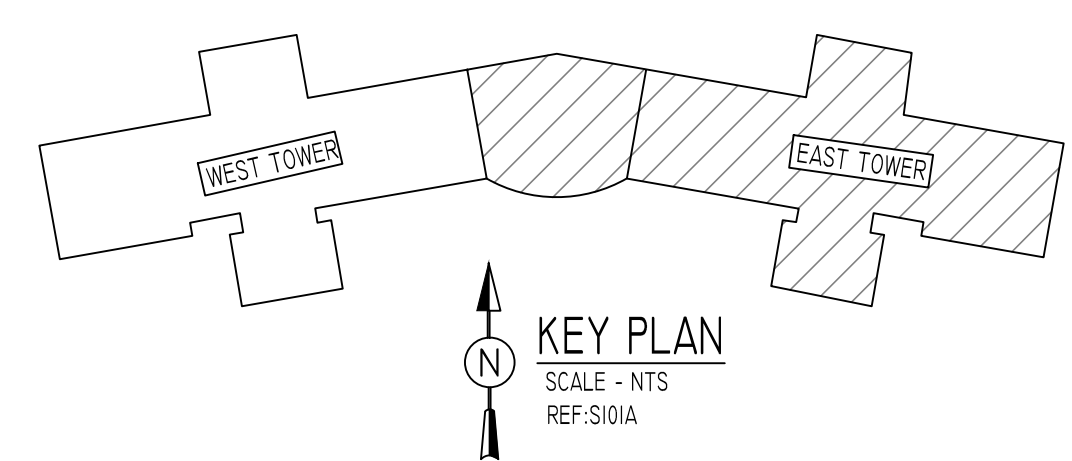
FOR FDN. WALLS & GRADE BEAMS

| SIZE | 4000 PSI | |
|------|----------|--------|
| | TOP | OTHERS |
| #3 | 24" | 19" |
| #4 | 32" | 25" |
| #5 | 40" | 31" |
| #6 | 48" | 37" |
| #7 | 70" | 54" |
| #8 | 80" | 62" |
| #9 | 91" | 70" |
| #10 | 102" | 79" |
| #11 | 113" | 87" |

TYPICAL REINFORCING BAR CLEARANCE TABLE

| LOCATION | MIN. COVER |
|-------------------|------------|
| DRILLED PIER | 3" CLR |
| SIDE TIES | 2" CLR |
| GRADE BEAM | 3" CLR |
| SIDE TIES | 2" CLR |
| CONC. PIER & SLAB | 2" CLR |

ALL BARS IN THIS DRAWING
ASTM A615 GRADE 60
BLACK UNCOATED



KEY PLAN
SCALE - NTS
REF:SI01A

Abbreviations:
IF=Inside Face
OF=Outside Face
EF=Each Face
DWS=Dowels
V=Vertical
H=Horizontal
COR=Corner
SLAB DWLS=Slab Dowels
EW=Each Way
B=Bottom
T=Top
M/DWL= Masonry Dowel
BB=Bond Beam
ALT: Alternate
ES=Each Side

OPNG=Opening
BAL: Balance
BTW=Between
CJ=Construction Joint
CLR=CLEARANCE
CML=Concrete Masonry Unit
CONT=Continuous
Elev=Elevation
EMBED=Embedment
SW=Short Way
LW=Long Way
BL=Black Bar
(EP)=Epoxy Bar
(GA)=Galvanized
(TB)=Threaded Bar
(CB)=Coupler Bar

NOTICE

Shortages, improper fabrication or claims for any other reason must be reported to this company within a period of 15 days of delivery. This company reserves the right to field inspect prior to replacement or reconditioning of nonconforming material, and will not honor charges for work done in the field without specific authorization from this company.

REINFORCING STEEL PLACING DRAWINGS ONLY USE IN CONJUNCTION WITH CONTRACT DRAWINGS & SPECIFICATIONS. ELEVATIONS & DIMENSIONS SHOWN ON THIS DRAWING ARE FOR DETAILING PURPOSES ONLY AND SHOULD NOT BE USED FOR CONSTRUCTION UNLESS VERIFIED BY ENGINEER OR CONTRACTOR.

| REVISION MARK | REVISION DETAILS | DATE |
|---------------|------------------|------------|
| 0 | FOR APPROVAL | 04/27/2021 |

| | | | |
|----------------|---|----------|--------------|
| PROJECT | LOYOLA NEWMAN TOWERS HVAC REPLACEMENT | | |
| LOCATION | BALTIMORE, MD 21210 | | |
| ARCHITECT | HORD COPLAND MACHT | | |
| ENGINEER | WHITNEY BALLY COX & MAGNANI | | |
| CUSTOMER | - | | |
| DRAWN BY: | MRS | DATE: | 04/27/21 |
| REVIEWED BY: | T/L | JOB NO.: | - |
| DRAWING TITLE: | LOBBY LEVEL PLAN EAST TOWER AND CONNECTOR | | DRAWING NO.: |
| | | | R7 |